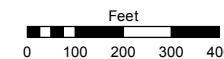


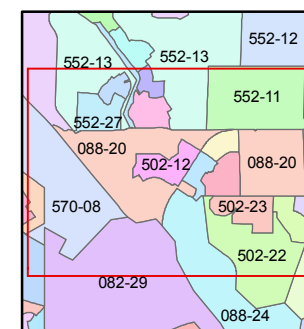
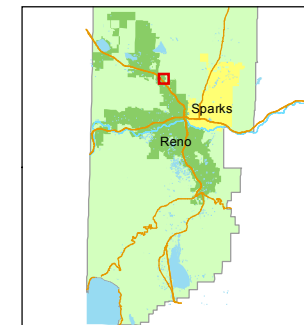
PORTION OF THE N 1/2 SECTION 15, T20N - R19E

STATE OF NEVADA
WASHOE COUNTY
ASSESSOR'S OFFICE
Joshua G. Wilson, Assessor

1001 East Ninth Street
Building D
Reno, Nevada 89512
(775) 328-2231

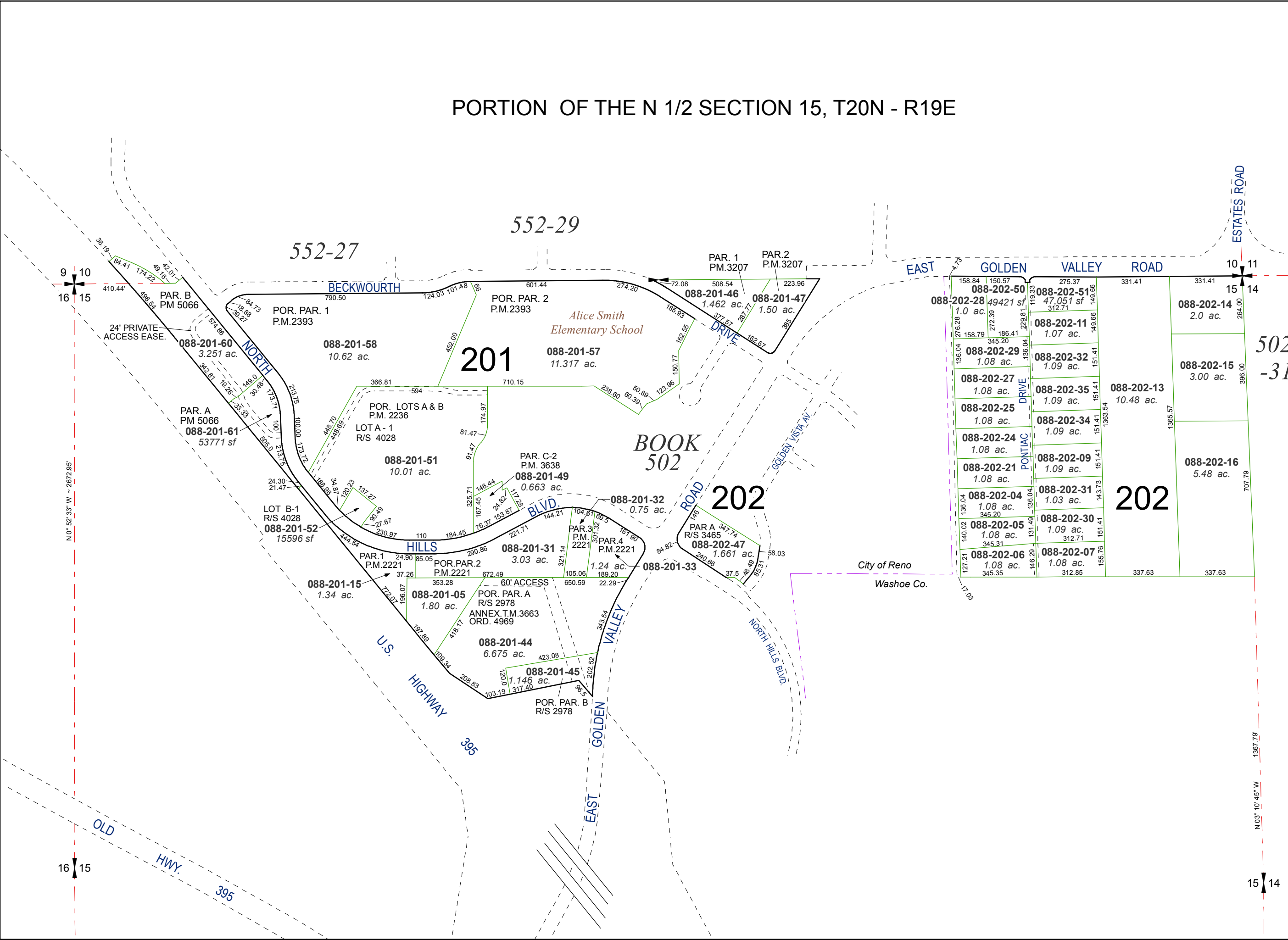


1 inch = 400 feet



created by: CFB 03/23/2011
last updated: KSB 7/15/11 KSB 3/14/12
area previously shown on map(s)

NOTE: This map was prepared for the use of the Washoe County Assessor for assessment and illustrative purposes only. It does not represent a survey of the premises. No liability is assumed as to the sufficiency or accuracy of the data delineated hereon.



9 10
16 15

N 0° 52' 33" W ~ 2672.95'

16 15

10 11
15 14

N 03° 10' 45" W
1367.79

15 14