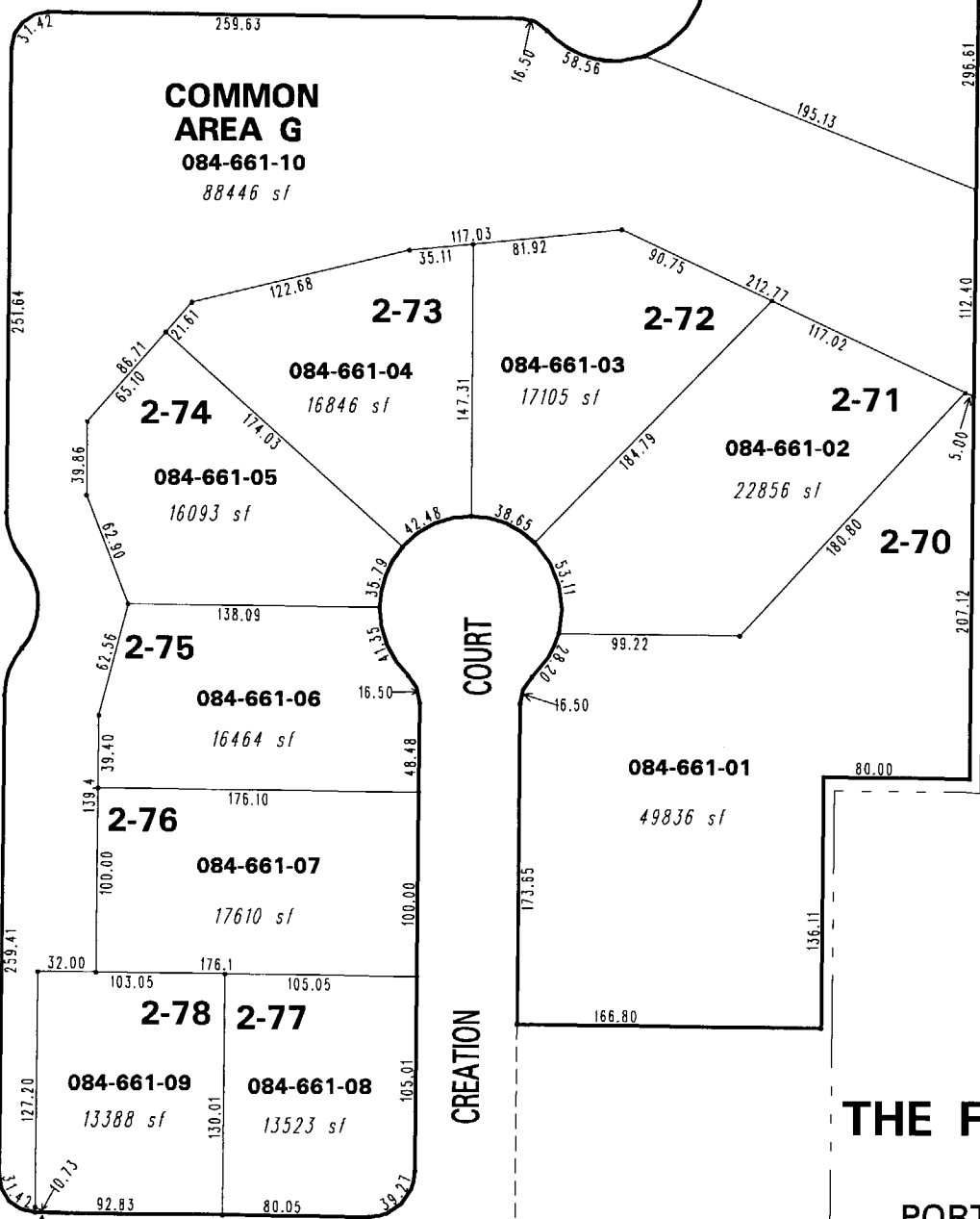
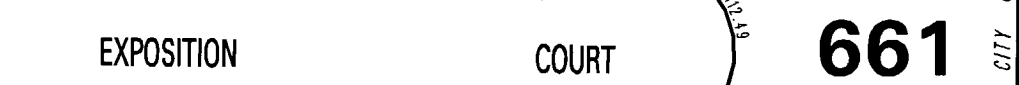
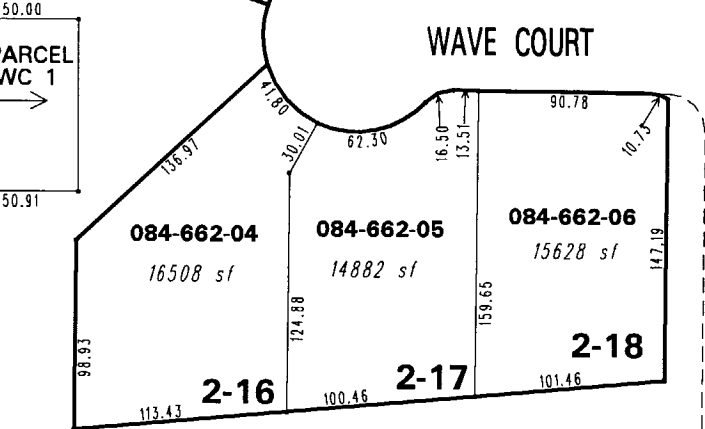
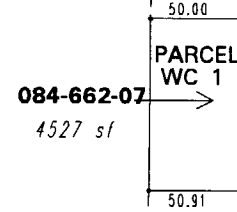
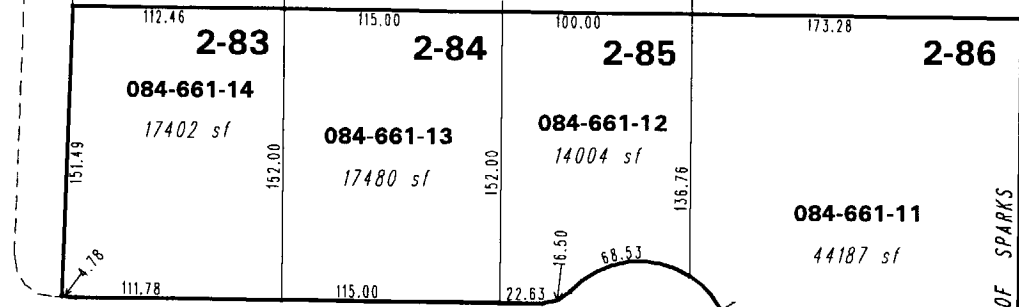
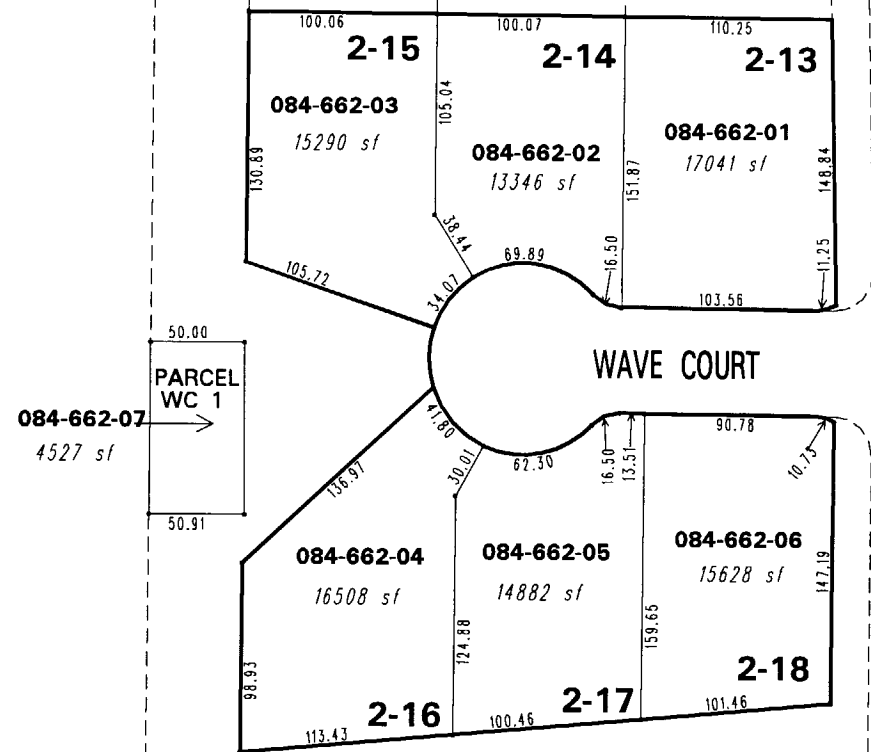


084-66

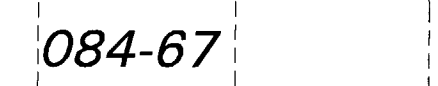
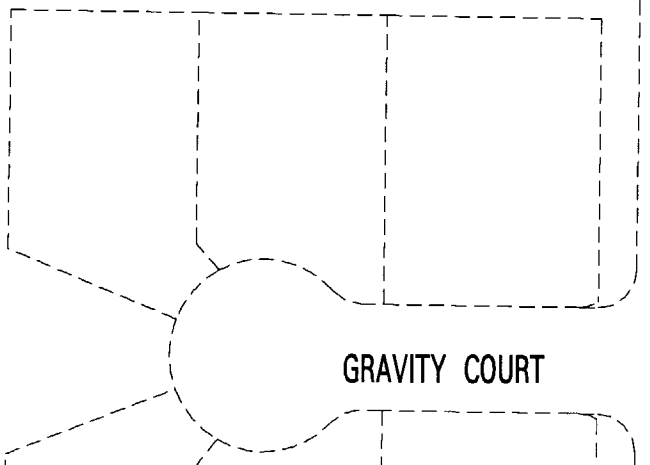
084-65

084-65



• PORTION OF HUBBLE DRIVE DEDICATED PER DED.TM. 4653

084-27

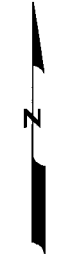


084-35

(#4655)  
**THE FOOTHILLS AT WINGFIELD VILLAGE 2**  
 PORTION OF WEST 1/2 OF SEC. 6  
 T20N - R21E

ROAD

EAGLENEST



1" = 100'



BOOK 524

NOTE: This map is prepared for the use of the Washoe County Assessor for assessment and illustrative purposes only. It does not represent a survey of the premises. No liability is assumed as to the sufficiency or the accuracy of the data delineated hereon.

Office of Washoe County Assessor, Nevada - Robert W. McGowan

This area previously shown on 084-27

NOTE: Areas of parcels which are less than 2 acres are shown in square feet.

Drawn by	PK 7/7/06
Revised	