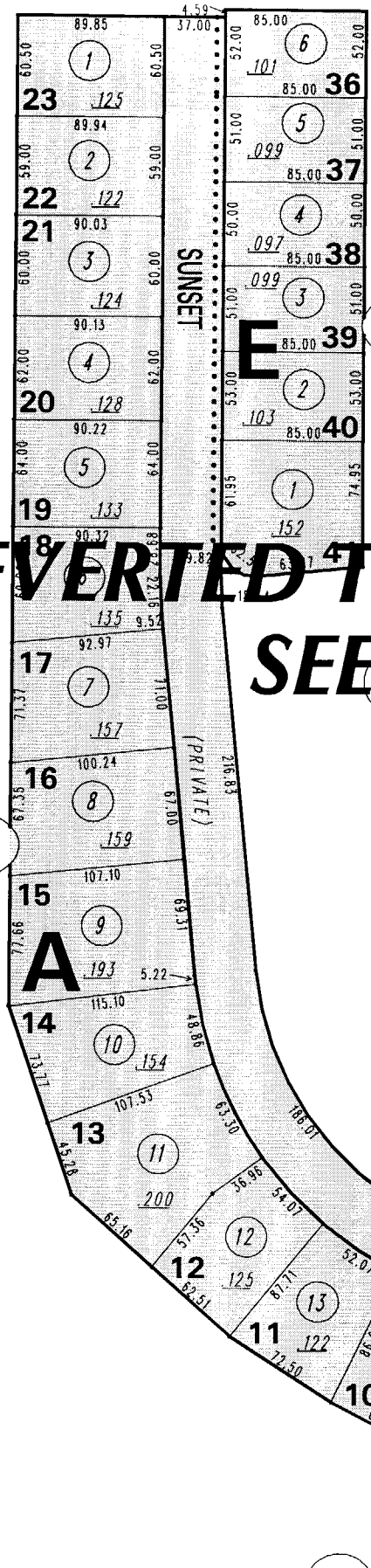


68

(#2888)
ROLLING HILLS HIGHLANDS
UNIT NO. 5



672

**REVERTED TO ACREAGE (T.M. 4897)
SEE PAGE 082-84**

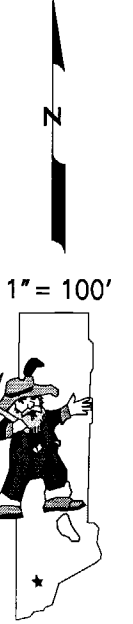
(#2730)
ROLLING HILLS HIGHLANDS
UNIT NO. 4
POR. SEC. 22
T.20.N.- R.19 E.

05

73

671

32



NOTE: This map is prepared for the use of the Washoe County Assessor for assessment and illustrative purposes only. It does not represent a survey of the premises. No liability is assumed as to the sufficiency or the accuracy of the data delineated hereon.

Office of Washoe County Assessor, Nevada - Joshua G. Wilson

This area previously shown on _____

NOTE: Areas of parcels which are less than 2 acres are shown in square feet.

Drawn by M.P. 11/04/92
Revised 5/96 TWT 4/18/07
NLH 1/05/09