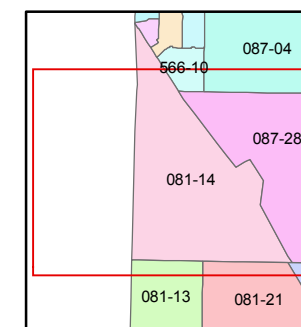
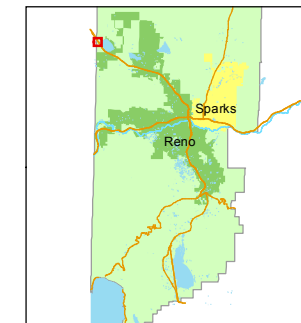


1 inch = 300 feet



created by: KSB 10/11/11

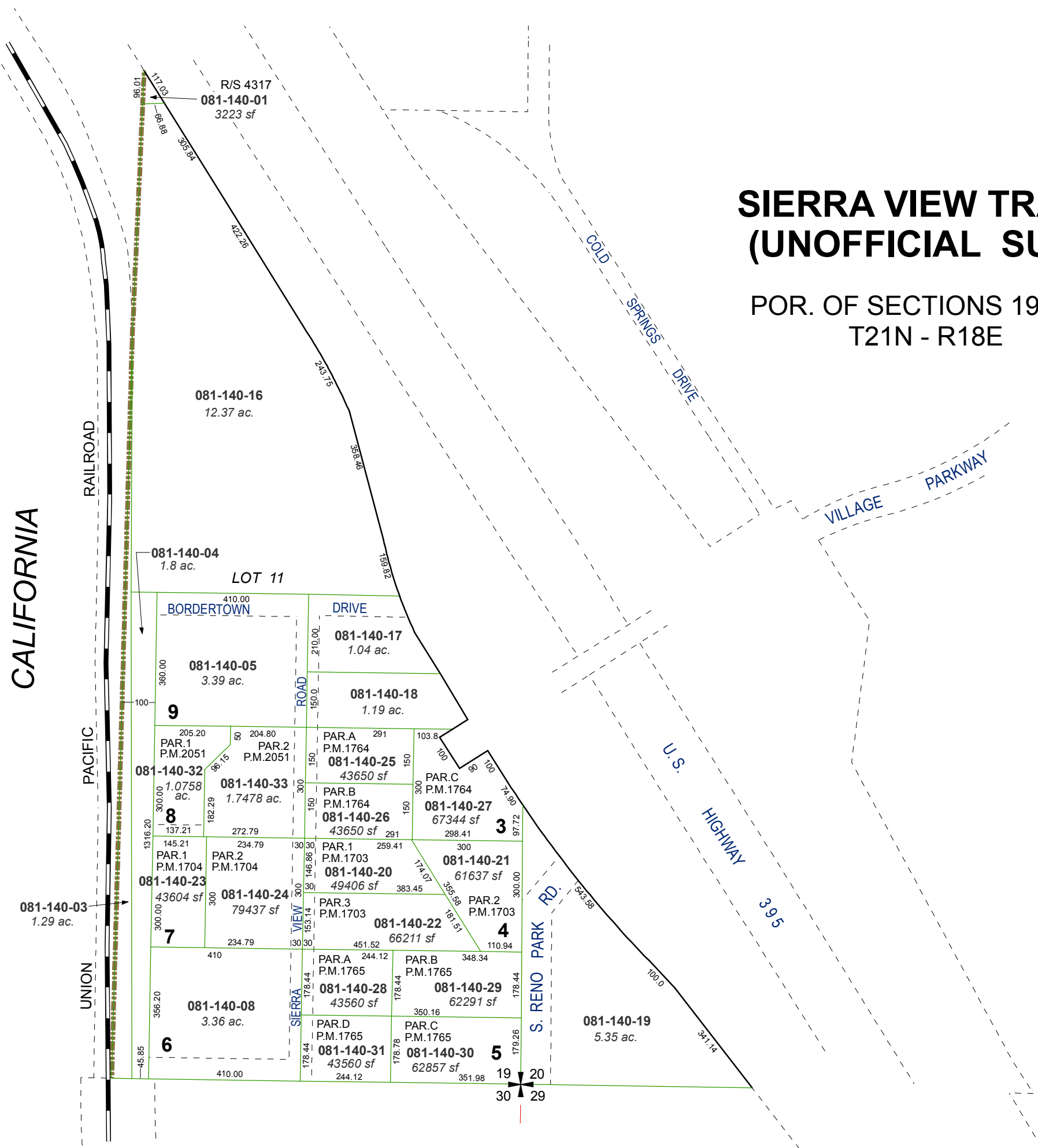
last updated: _____

area previously shown on map(s)

NOTE: This map was prepared for the use of the Washoe County Assessor for assessment and illustrative purposes only. It does not represent a survey of the premises. No liability is assumed as to the sufficiency or accuracy of the data delineated hereon.

SIERRA VIEW TRACT (UNOFFICIAL SUB.)

POR. OF SECTIONS 19 & 20 T21N - R18E



CALIFORNIA PACIFIC RAILROAD

COLD SPRINGS DRIVE

VILLAGE PARKWAY

U.S. HIGHWAY 395

S. RENO PARK RD

UNION PACIFIC RAILROAD

LOT 11

BORDERTOWN DRIVE

SIERRA VIEW ROAD

R/S 4317
081-140-01
3223 sf

081-140-16
12.37 ac.

081-140-04
1.8 ac.

081-140-17
1.04 ac.

081-140-18
1.19 ac.

081-140-05
3.39 ac.

9

PAR.1 P.M.2051
081-140-32
1.0758 ac.

PAR.2 P.M.2051
081-140-33
1.7478 ac.

PAR.A P.M.1764
081-140-25
43650 sf

PAR.B P.M.1764
081-140-26
43650 sf

PAR.C P.M.1764
081-140-27
67344 sf

PAR.1 P.M.1704
081-140-23
43604 sf

PAR.2 P.M.1704
081-140-24
79437 sf

PAR.1 P.M.1703
081-140-20
49406 sf

PAR.3 P.M.1703
081-140-22
66211 sf

PAR.2 P.M.1703
081-140-21
61637 sf

PAR.1 P.M.1704
081-140-23
43604 sf

PAR.2 P.M.1704
081-140-24
79437 sf

PAR.1 P.M.1703
081-140-20
49406 sf

PAR.3 P.M.1703
081-140-22
66211 sf

PAR.2 P.M.1703
081-140-21
61637 sf

PAR.1 P.M.1704
081-140-23
43604 sf

PAR.2 P.M.1704
081-140-24
79437 sf

PAR.1 P.M.1703
081-140-20
49406 sf

PAR.3 P.M.1703
081-140-22
66211 sf

PAR.2 P.M.1703
081-140-21
61637 sf

PAR.1 P.M.1704
081-140-23
43604 sf

PAR.2 P.M.1704
081-140-24
79437 sf

PAR.1 P.M.1703
081-140-20
49406 sf

PAR.3 P.M.1703
081-140-22
66211 sf

PAR.2 P.M.1703
081-140-21
61637 sf

PAR.1 P.M.1704
081-140-23
43604 sf

PAR.2 P.M.1704
081-140-24
79437 sf

PAR.1 P.M.1703
081-140-20
49406 sf

PAR.3 P.M.1703
081-140-22
66211 sf

PAR.2 P.M.1703
081-140-21
61637 sf

PAR.1 P.M.1704
081-140-23
43604 sf

PAR.2 P.M.1704
081-140-24
79437 sf

PAR.1 P.M.1703
081-140-20
49406 sf

PAR.3 P.M.1703
081-140-22
66211 sf

PAR.2 P.M.1703
081-140-21
61637 sf

PAR.1 P.M.1704
081-140-23
43604 sf

PAR.2 P.M.1704
081-140-24
79437 sf

PAR.1 P.M.1703
081-140-20
49406 sf

PAR.3 P.M.1703
081-140-22
66211 sf

PAR.2 P.M.1703
081-140-21
61637 sf

PAR.1 P.M.1704
081-140-23
43604 sf

PAR.2 P.M.1704
081-140-24
79437 sf

PAR.1 P.M.1703
081-140-20
49406 sf

PAR.3 P.M.1703
081-140-22
66211 sf

PAR.2 P.M.1703
081-140-21
61637 sf

PAR.1 P.M.1704
081-140-23
43604 sf

PAR.2 P.M.1704
081-140-24
79437 sf

PAR.1 P.M.1703
081-140-20
49406 sf

PAR.3 P.M.1703
081-140-22
66211 sf

PAR.2 P.M.1703
081-140-21
61637 sf

081-140-19
5.35 ac.

19 20
30 29