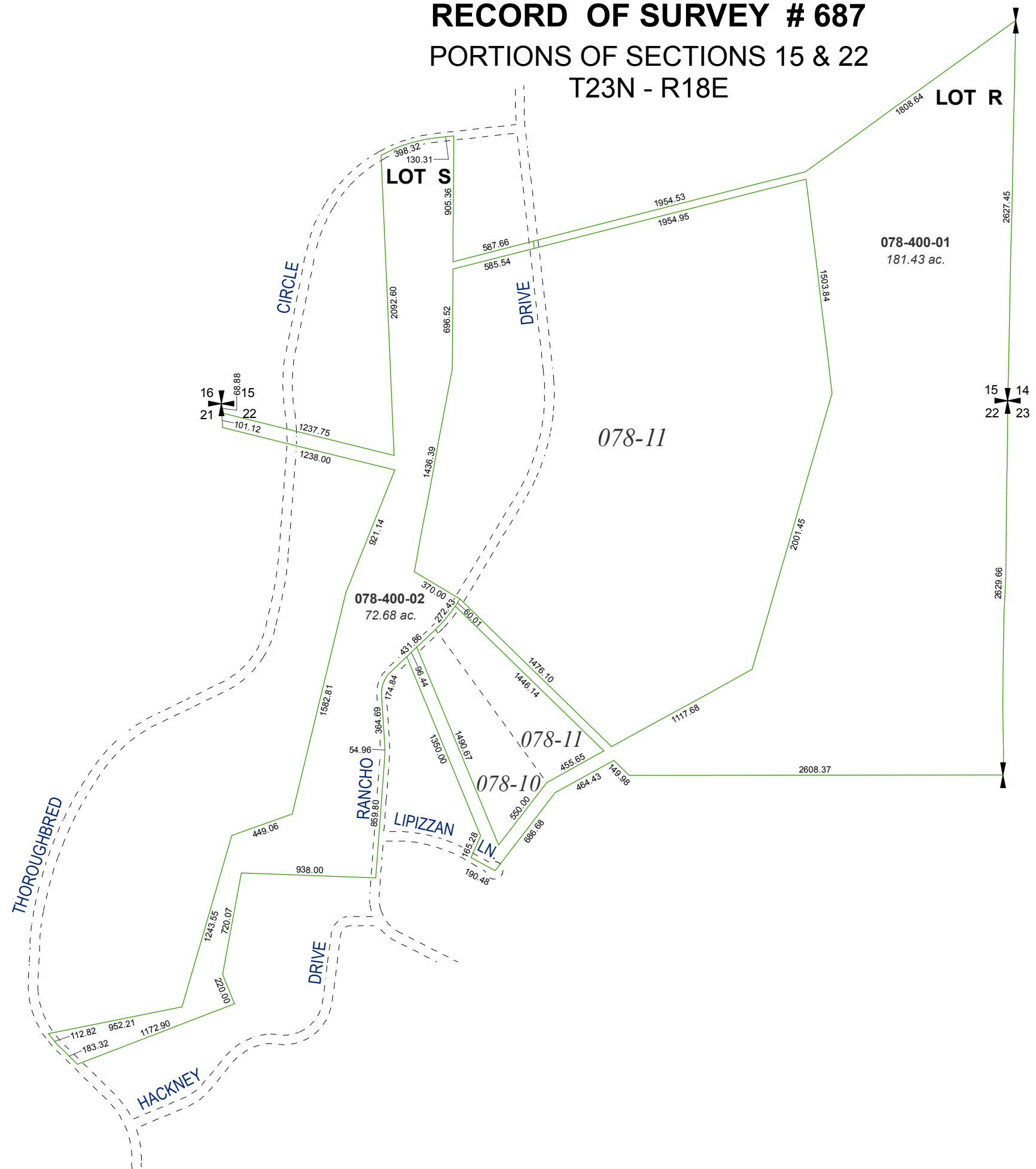


# RECORD OF SURVEY # 687

## PORTIONS OF SECTIONS 15 & 22

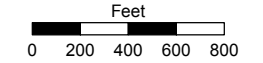
### T23N - R18E



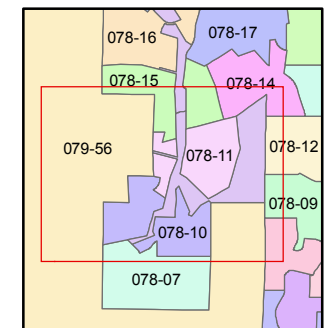
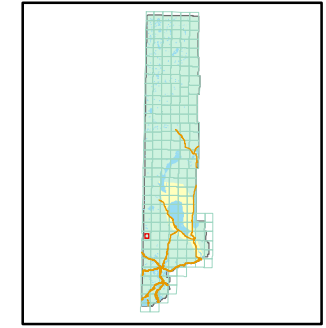
Assessor's Map Number  
**078-40**

STATE OF NEVADA  
**WASHOE COUNTY**  
ASSESSOR'S OFFICE  
Joshua G. Wilson, Assessor

1001 East Ninth Street  
Building D  
Reno, Nevada 89512  
(775) 328-2231



1 inch = 800 feet



created by: TWT 4/7/2011

last updated: \_\_\_\_\_

area previously shown on map(s)  
078-11

NOTE: This map was prepared for the use of the Washoe County Assessor for assessment and illustrative purposes only. It does not represent a survey of the premises. No liability is assumed as to the sufficiency or accuracy of the data delineated hereon.