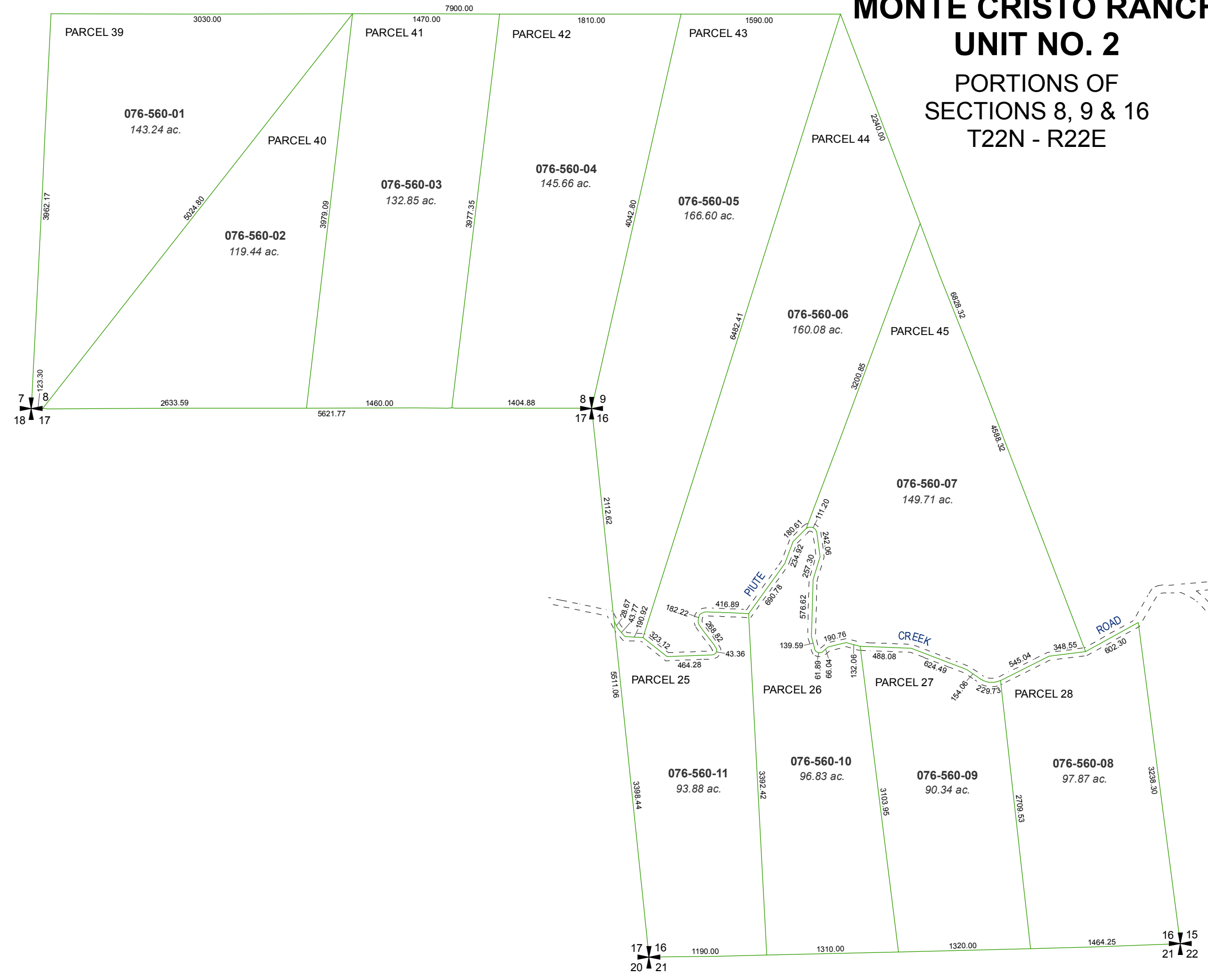


MAP OF DIVISION INTO LARGE PARCELS # 40 MONTE CRISTO RANCH

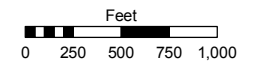
UNIT NO. 2

PORTIONS OF
SECTIONS 8, 9 & 16
T22N - R22E

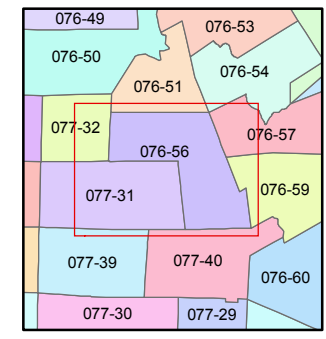
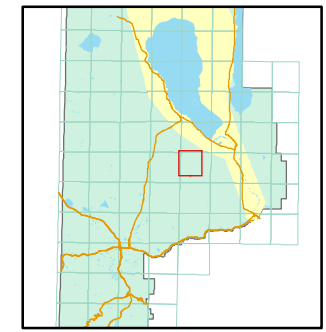


Assessor's Map Number
076-56

STATE OF NEVADA
WASHOE COUNTY
ASSESSOR'S OFFICE
Joshua G. Wilson, Assessor
1001 East Ninth Street
Building D
Reno, Nevada 89512
(775) 328-2231



1 inch = 1,000 feet



created by: TWT 5/18/2011
last updated: _____
area previously shown on map(s) _____

NOTE: This map was prepared for the use of the Washoe County Assessor for assessment and illustrative purposes only. It does not represent a survey of the premises. No liability is assumed as to the sufficiency or accuracy of the data delineated hereon.