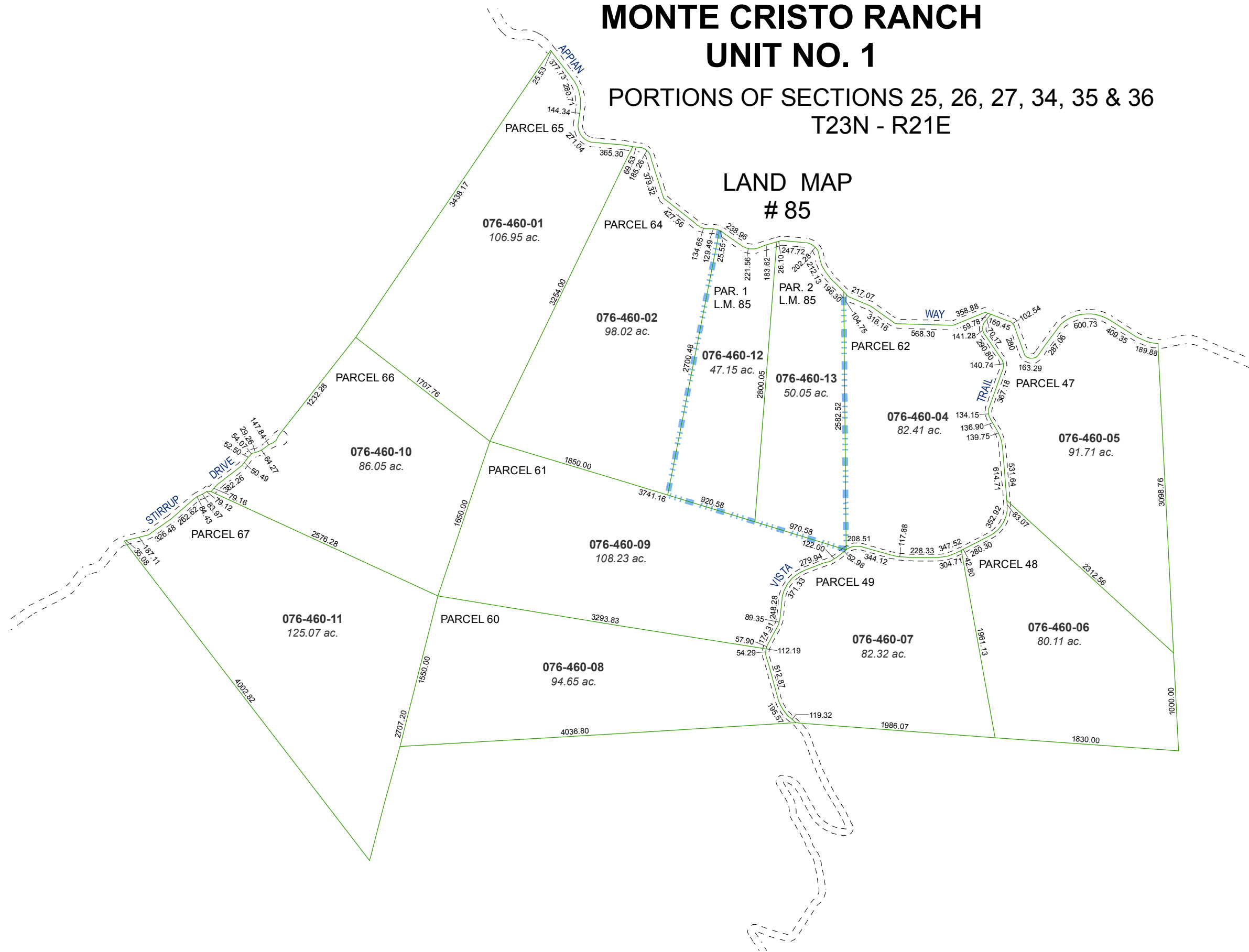


MAP OF DIVISION INTO LARGE PARCELS #34 MONTE CRISTO RANCH UNIT NO. 1

PORTIONS OF SECTIONS 25, 26, 27, 34, 35 & 36
T23N - R21E

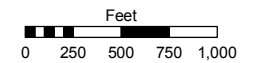


LAND MAP
85

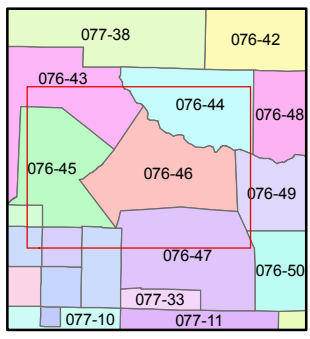
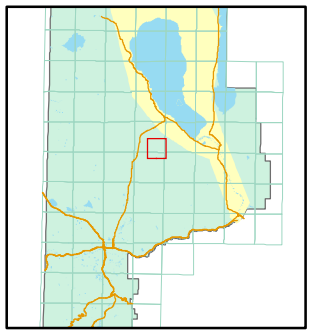
Assessor's Map Number
076-46

STATE OF NEVADA
WASHOE COUNTY
ASSESSOR'S OFFICE

Joshua G. Wilson, Assessor
1001 East Ninth Street
Building D
Reno, Nevada 89512
(775) 328-2231



1 inch = 1,000 feet



created by: TWT 5/12/2011

last updated: _____

area previously shown on map(s)

NOTE: This map was prepared for the use of the Washoe County Assessor for assessment and illustrative purposes only. It does not represent a survey of the premises. No liability is assumed as to the sufficiency or accuracy of the data delineated hereon.