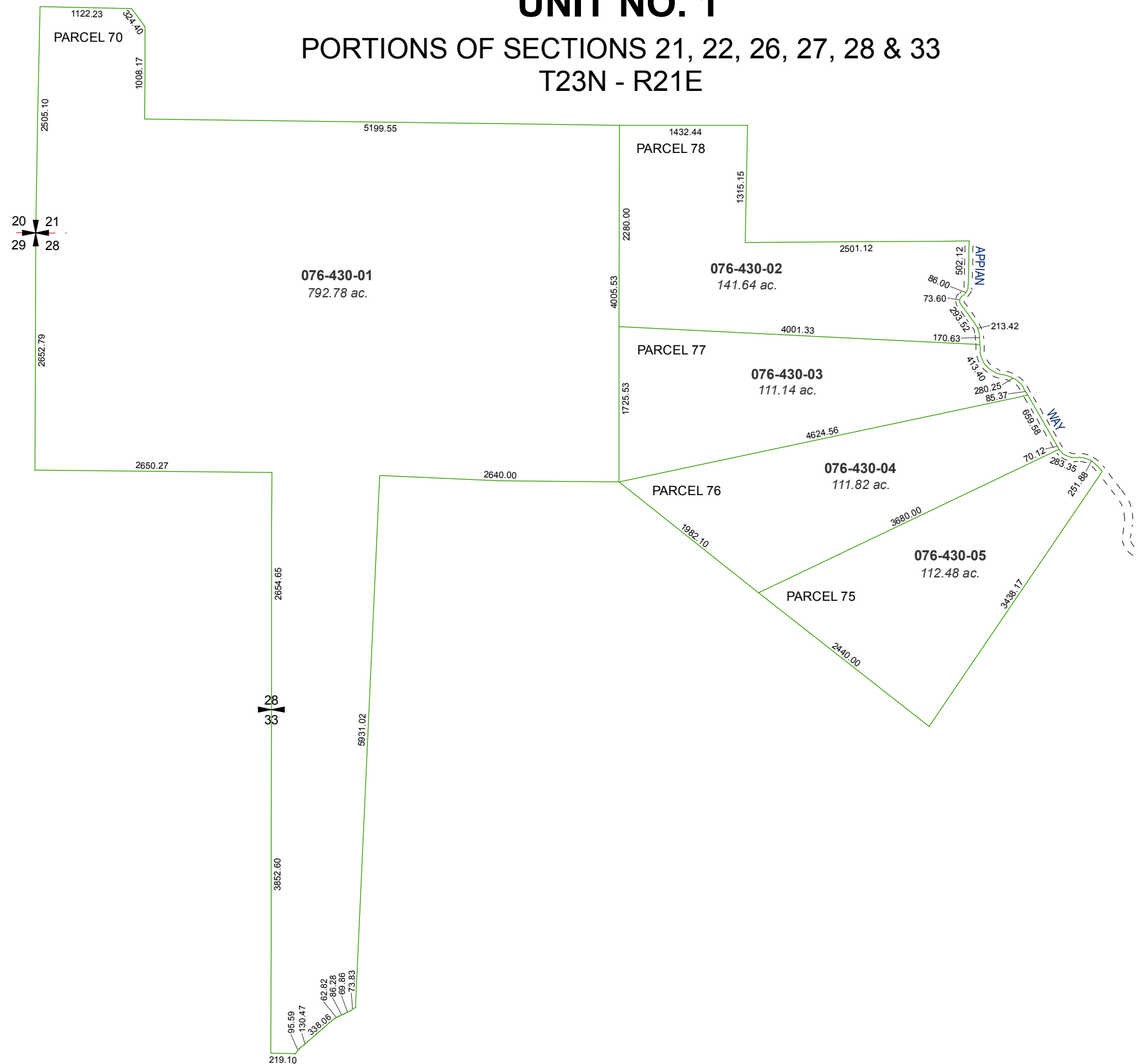


MAP OF DIVISION INTO LARGE PARCELS # 34 MONTE CRISTO RANCH UNIT NO. 1

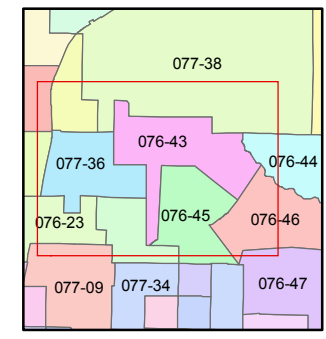
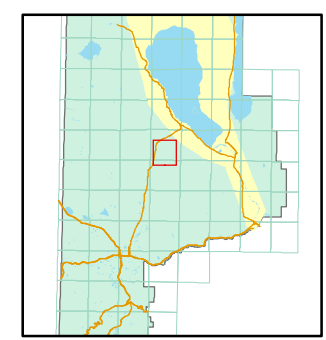
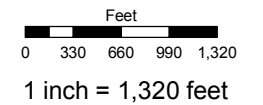
PORTIONS OF SECTIONS 21, 22, 26, 27, 28 & 33
T23N - R21E



Assessor's Map Number
076-43

STATE OF NEVADA
WASHOE COUNTY
ASSESSOR'S OFFICE

Joshua G. Wilson, Assessor
1001 East Ninth Street
Building D
Reno, Nevada 89512
(775) 328-2231



created by: TWT 5/9/2011
last updated: _____
area previously shown on map(s)

NOTE: This map was prepared for the use of the Washoe County Assessor for assessment and illustrative purposes only. It does not represent a survey of the premises. No liability is assumed as to the sufficiency or accuracy of the data delineated hereon.