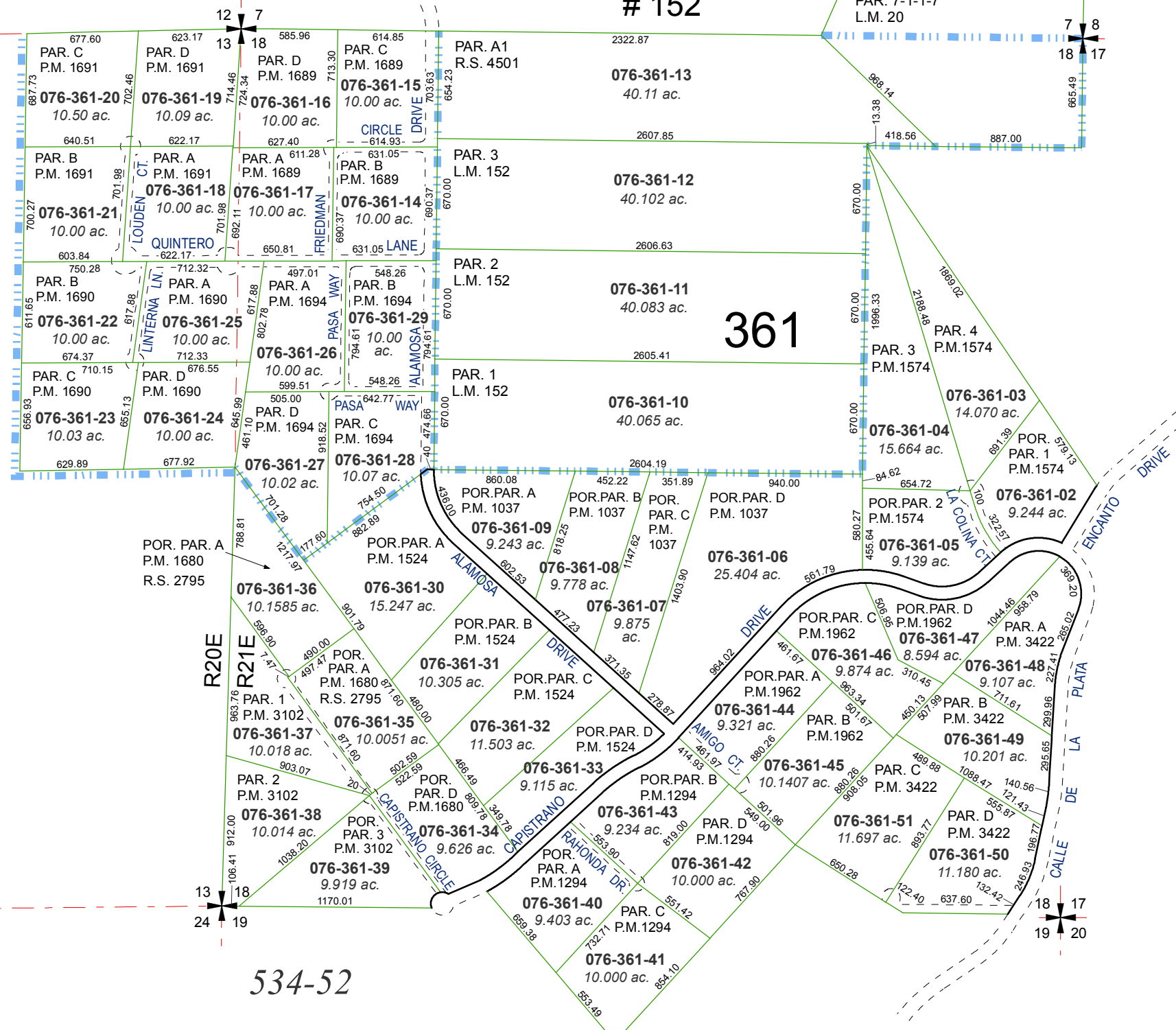


POR. SEC. 13, T21N - R20E AND
POR. SEC. 7, 18 & 19, T21N - R21E

MAP OF DIVISION INTO LARGE PARCELS # 30 SPANISH SPRINGS VALLEY RANCHES UNIT 4

LAND MAP
152



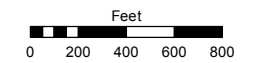
534-52

MAP OF DIVISION INTO LARGE PARCELS # 20 SPANISH SPRINGS VALLEY RANCHES - UNIT 1 RECORD OF SURVEY #1087

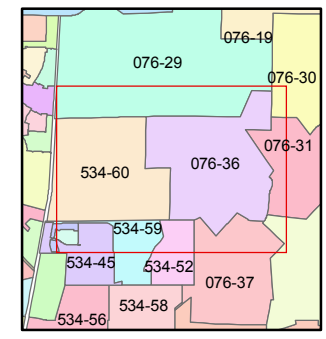
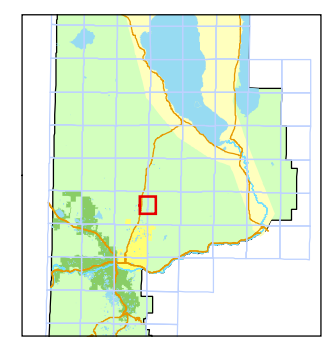
Assessor's Map Number
076-36

STATE OF NEVADA
WASHOE COUNTY
ASSESSOR'S OFFICE
Joshua G. Wilson, Assessor

1001 East Ninth Street
Building D
Reno, Nevada 89512
(775) 328-2231



1 inch = 800 feet



created by: TWT 6/20/2011
last updated: TWT 9/14/11 KSB 6/21/12

area previously shown on map(s)

NOTE: This map was prepared for the use of the Washoe County Assessor for assessment and illustrative purposes only. It does not represent a survey of the premises. No liability is assumed as to the sufficiency or accuracy of the data delineated hereon.

