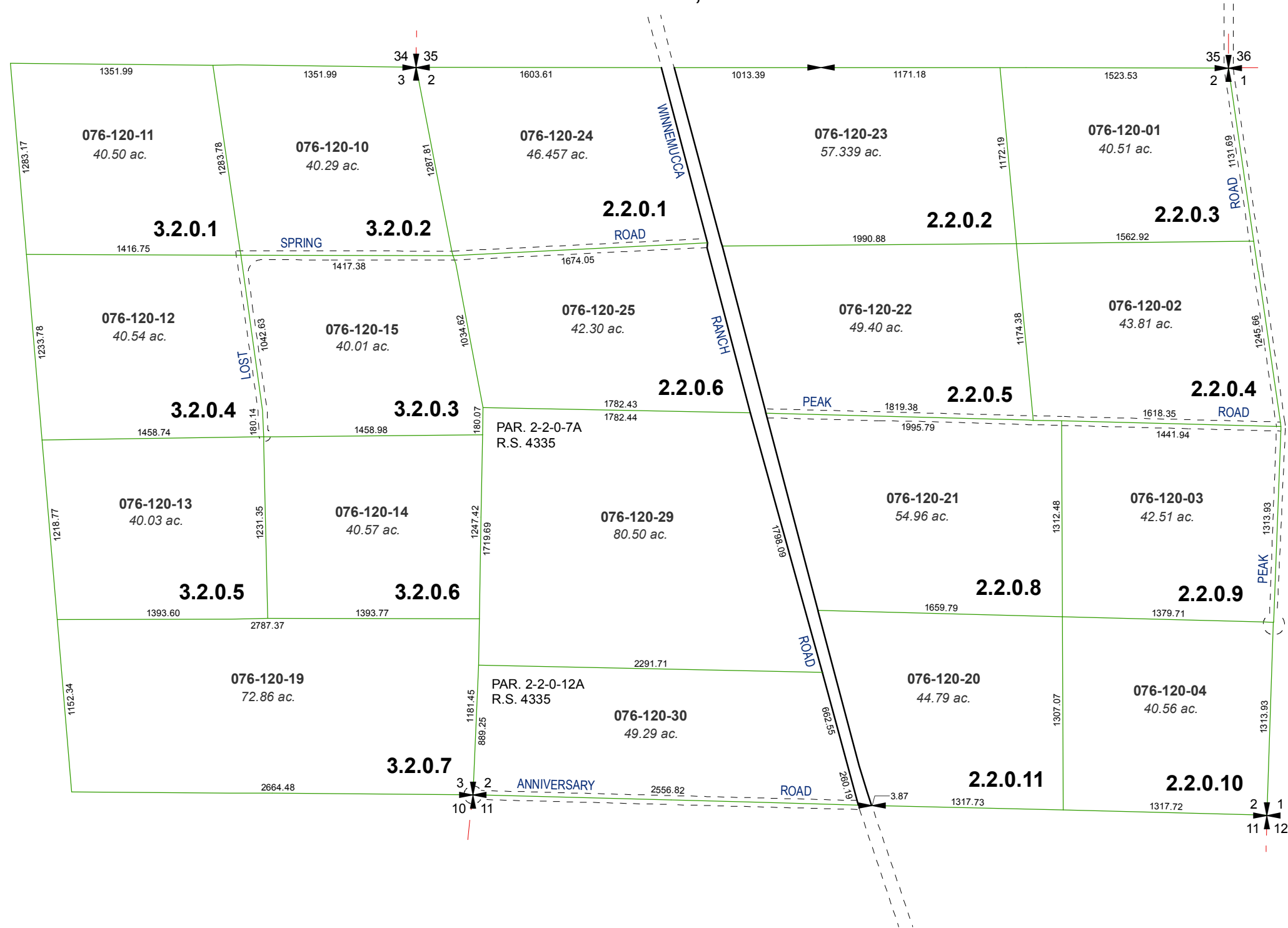


MAP OF DIVISION INTO LARGE PARCELS # 3 PALOMINO VALLEY - UNIT 3

RECORD OF SURVEY # 912 &
AMENDED RECORD OF SURVEY # 960

SEC. 2 & E 1/2 SEC. 3, T22N - R20E

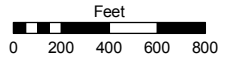


Assessor's Map Number
076-12

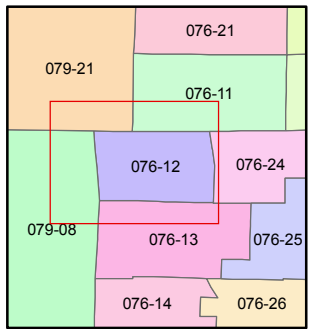
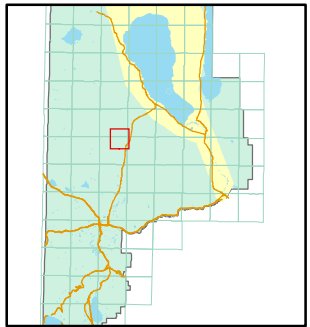
STATE OF NEVADA
WASHOE COUNTY
ASSESSOR'S OFFICE

Joshua G. Wilson, Assessor

1001 East Ninth Street
Building D
Reno, Nevada 89512
(775) 328-2231



1 inch = 800 feet



created by: TWT 5/26/2011

last updated: _____

area previously shown on map(s)

NOTE: This map was prepared for the use of the Washoe County Assessor for assessment and illustrative purposes only. It does not represent a survey of the premises. No liability is assumed as to the sufficiency or accuracy of the data delineated hereon.