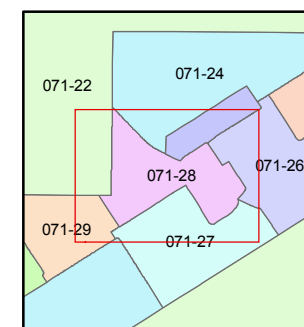
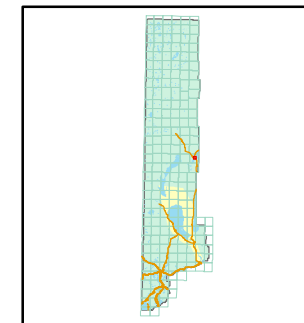


1 inch = 100 feet



created by: TWT 6/30/2010

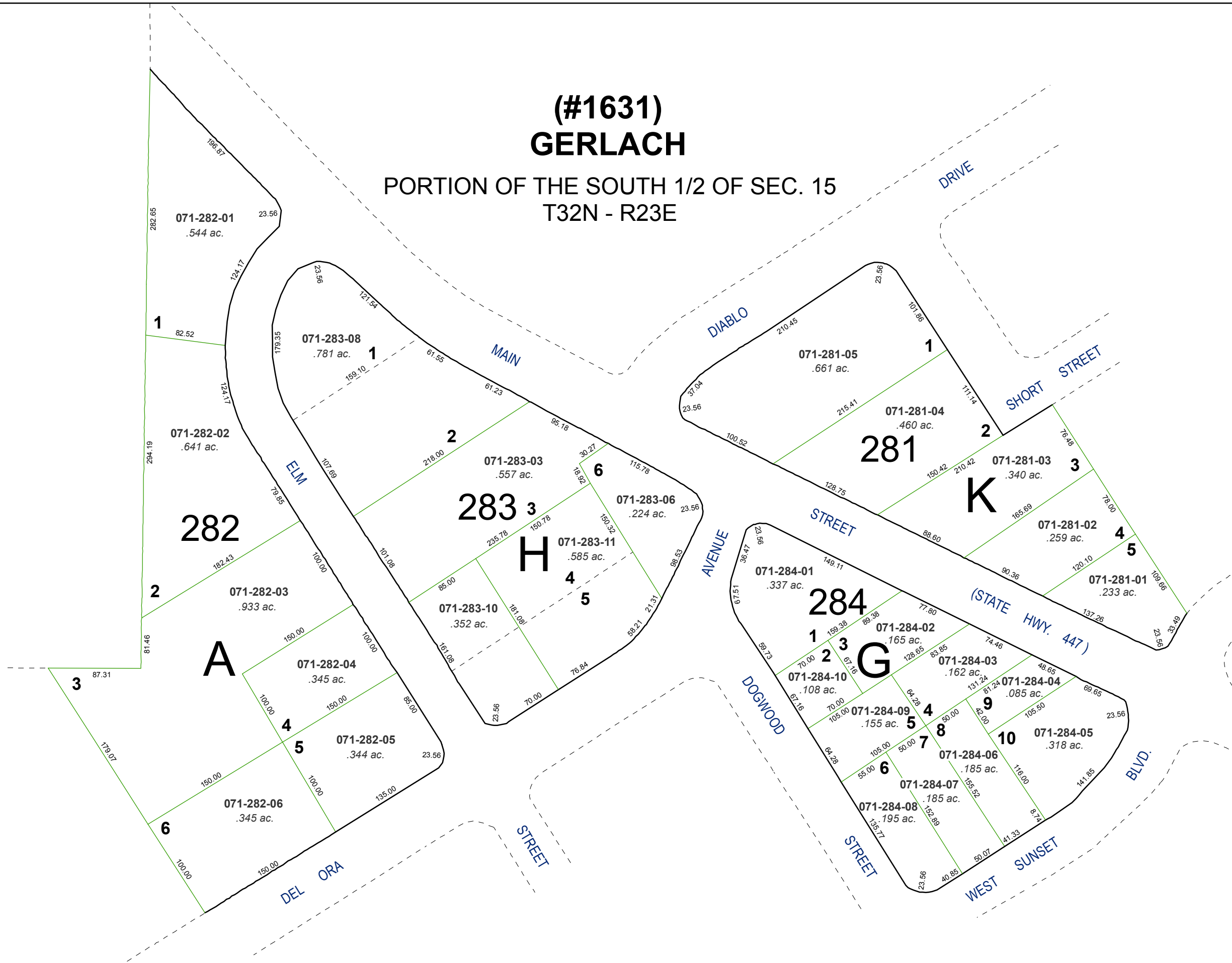
last updated: _____

area previously shown on map(s)

NOTE: This map was prepared for the use of the Washoe County Assessor for assessment and illustrative purposes only. It does not represent a survey of the premises. No liability is assumed as to the sufficiency or accuracy of the data delineated hereon.

(#1631) GERLACH

PORTION OF THE SOUTH 1/2 OF SEC. 15 T32N - R23E



071-282-01
.544 ac.

1

071-283-08
.781 ac.

1

071-282-02
.641 ac.

2

071-283-03
.557 ac.

283

6

071-283-06
.224 ac.

H

071-283-11
.585 ac.

4

071-283-10
.352 ac.

5

282

A

071-282-03
.933 ac.

2

071-282-04
.345 ac.

4

071-282-05
.344 ac.

5

071-282-06
.345 ac.

6

DEL ORA

071-281-05
.661 ac.

1

071-281-04
.460 ac.

281

K

071-281-03
.340 ac.

3

071-281-02
.259 ac.

4

071-281-01
.233 ac.

5

071-284-01
.337 ac.

284

G

071-284-02
.165 ac.

1

2

3

071-284-10
.108 ac.

071-284-09
.155 ac.

4

5

6

7

8

9

10

071-284-03
.162 ac.

071-284-04
.085 ac.

071-284-05
.318 ac.

071-284-06
.185 ac.

071-284-07
.185 ac.

071-284-08
.195 ac.

WEST SUNSET

BLVD.

(STATE HWY. 447)

AVENUE

DOGWOOD

STREET

STREET

DIABLO

DRIVE

SHORT

STREET

MAIN

ELM

STREET