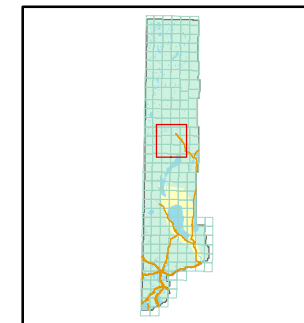


1 inch = 5,280 feet



066-04	066-06	066-08
066-01	066-02	066-03
071-19	071-20	071-21
071-16	071-17	071-18
071-13	071-14	071-15



created by: NLH 5/08/2009

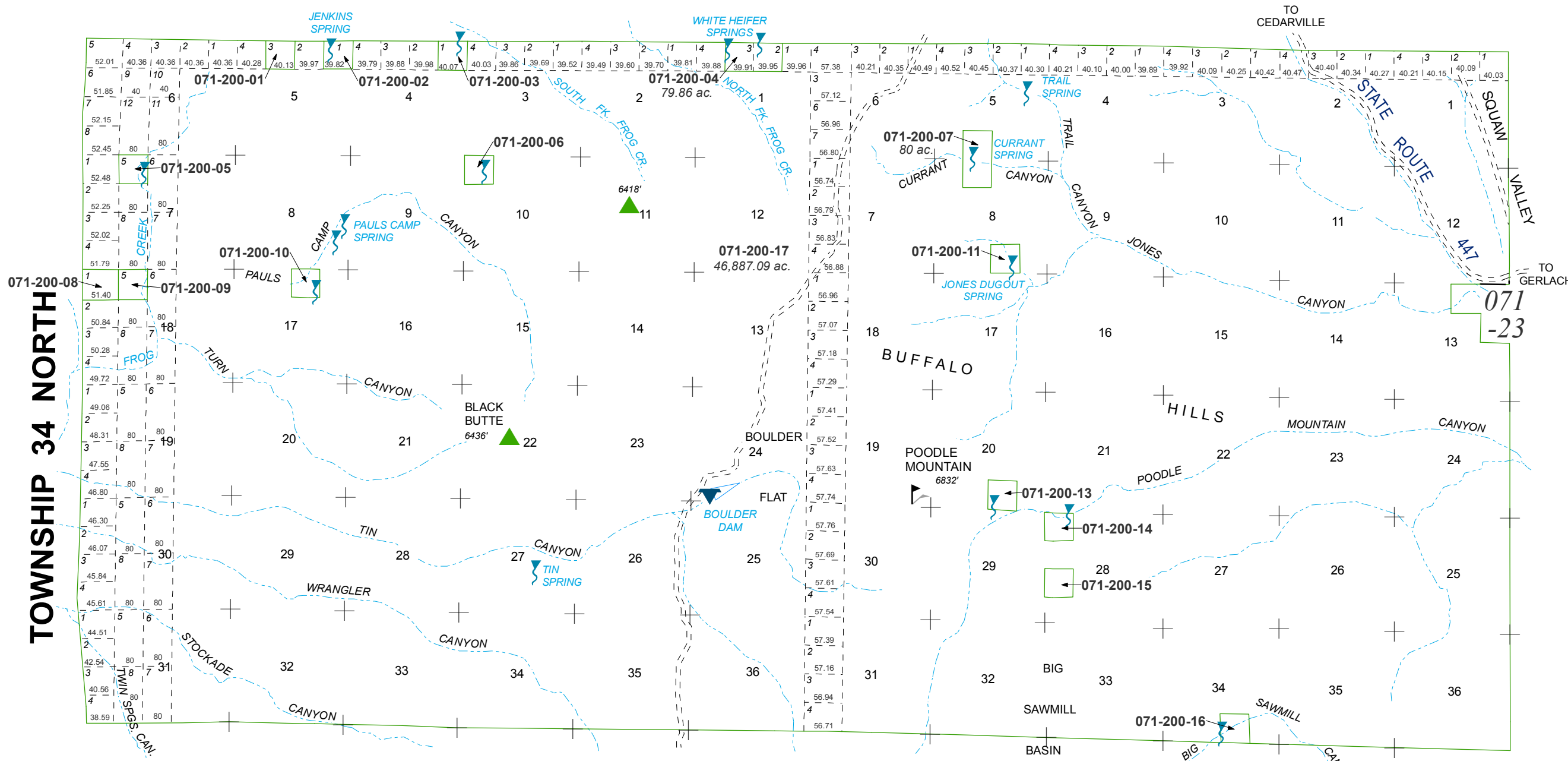
last updated: TWT 10/27/2010

area previously shown on map(s)

NOTE: This map was prepared for the use of the Washoe County Assessor for assessment and illustrative purposes only. It does not represent a survey of the premises. No liability is assumed as to the sufficiency or accuracy of the data delineated hereon.

RANGE 20 EAST

RANGE 21 EAST



NOTE : All unmarked 1/4 1/4 sec. parcels are 40 ac.

TOWNSHIP 34 NORTH