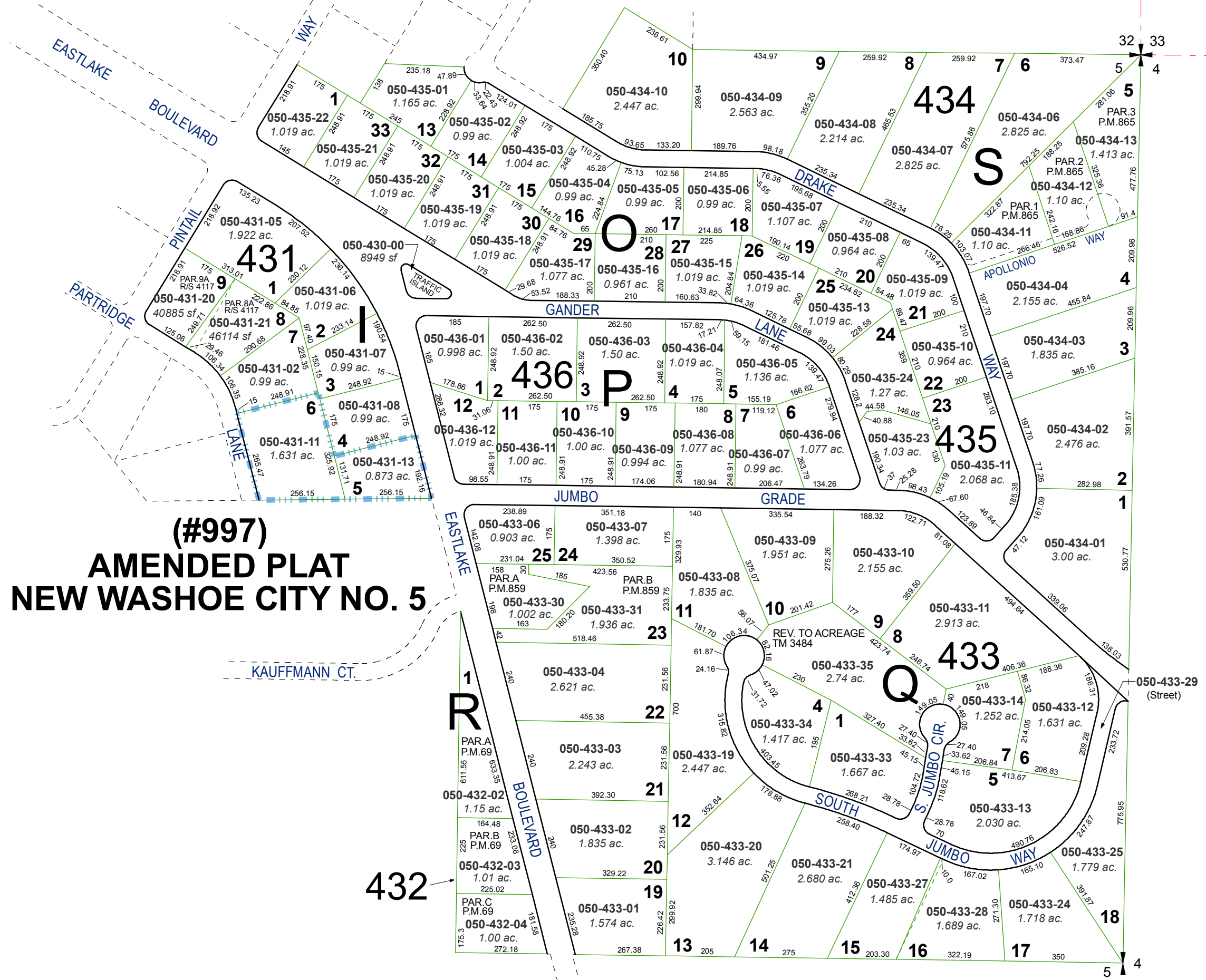


# NEW WASHOE CITY SUB. NO. 5 (#974)

POR. OF N 1/2 SECTION 5, T16N - R20E

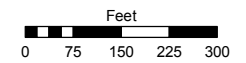


## (#997) AMENDED PLAT NEW WASHOE CITY NO. 5

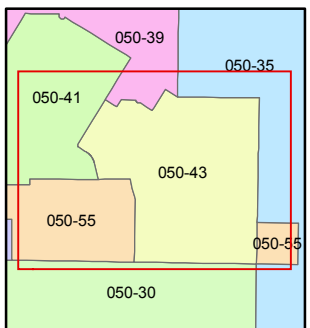
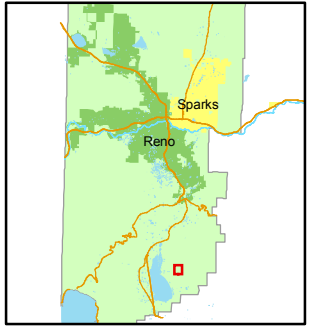
Assessor's Map Number  
**050-43**

STATE OF NEVADA  
**WASHOE COUNTY**  
ASSESSOR'S OFFICE  
Joshua G. Wilson, Assessor

1001 East Ninth Street  
Building D  
Reno, Nevada 89512  
(775) 328-2231



1 inch = 300 feet



created by: KSB 9/09/10

last updated: \_\_\_\_\_

area previously shown on map(s) \_\_\_\_\_

NOTE: This map was prepared for the use of the Washoe County Assessor for assessment and illustrative purposes only. It does not represent a survey of the premises. No liability is assumed as to the sufficiency or accuracy of the data delineated hereon.