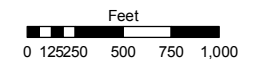


# PORTIONS OF SECTIONS 13, 23, 24, 25 & 26 T17N - R19E

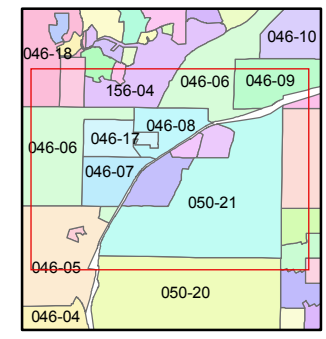
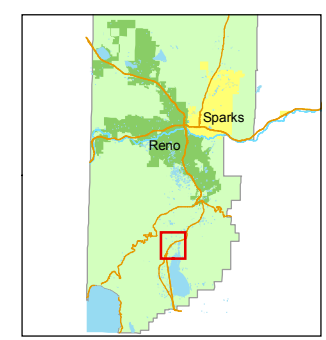
Assessor's Map Number  
**050-21**

STATE OF NEVADA  
**WASHOE COUNTY**  
ASSESSOR'S OFFICE  
Joshua G. Wilson, Assessor

1001 East Ninth Street  
Building D  
Reno, Nevada 89512  
(775) 328-2231



1 inch = 1,000 feet



created by: CFB 05/12/2010  
last updated: \_\_\_\_\_  
area previously shown on map(s) \_\_\_\_\_

NOTE: This map was prepared for the use of the Washoe County Assessor for assessment and illustrative purposes only. It does not represent a survey of the premises. No liability is assumed as to the sufficiency or accuracy of the data delineated hereon.

