

SEC.36 AND
POR. SECTIONS 25,26 & 35
T16N - R19E

POR. SECTIONS 1 & 2
T17N - R19E

BOOK 46

BOOK 46

BOOK 55

Office of Washoe County Assessor, Nevada - Robert W. McGowan

050-29

050-06

050-53

050-33

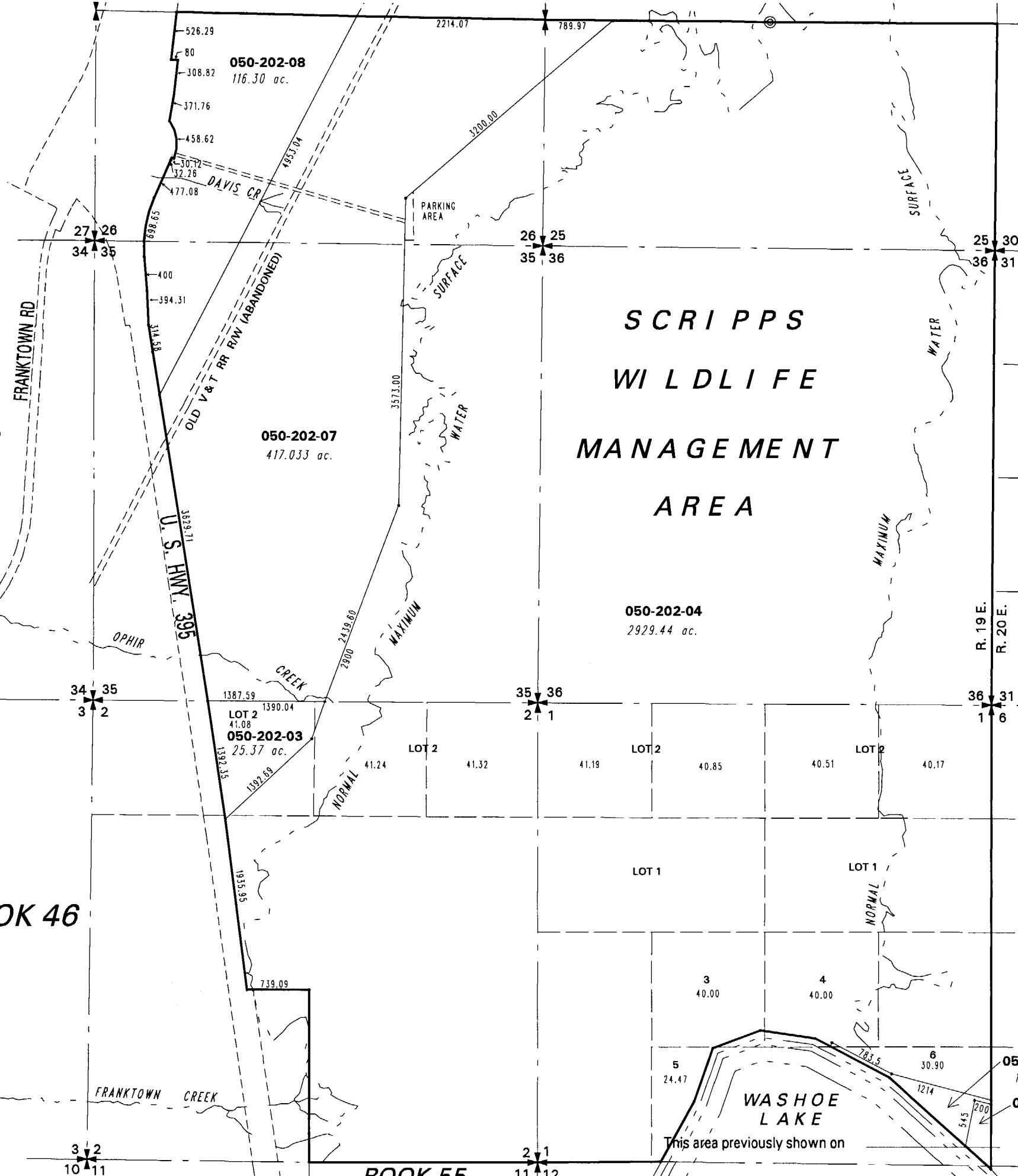
050-34

050-32

050-35

SCRIPPS
WILDLIFE
MANAGEMENT
AREA

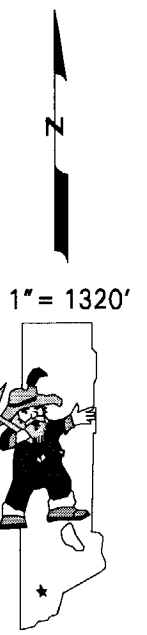
WASHOE
LAKE



NOTE: This map is prepared for the use of the Washoe County Assessor for assessment and illustrative purposes only. It does not represent a survey of the premises. No liability is assumed as to the sufficiency or the accuracy of the data delineated hereon.

NOTE: Areas of parcels which are less than 2 acres are shown in square feet.

Drawn by	HCS	06/23/03
Revised	CFB	4/29/2006



1" = 1320'