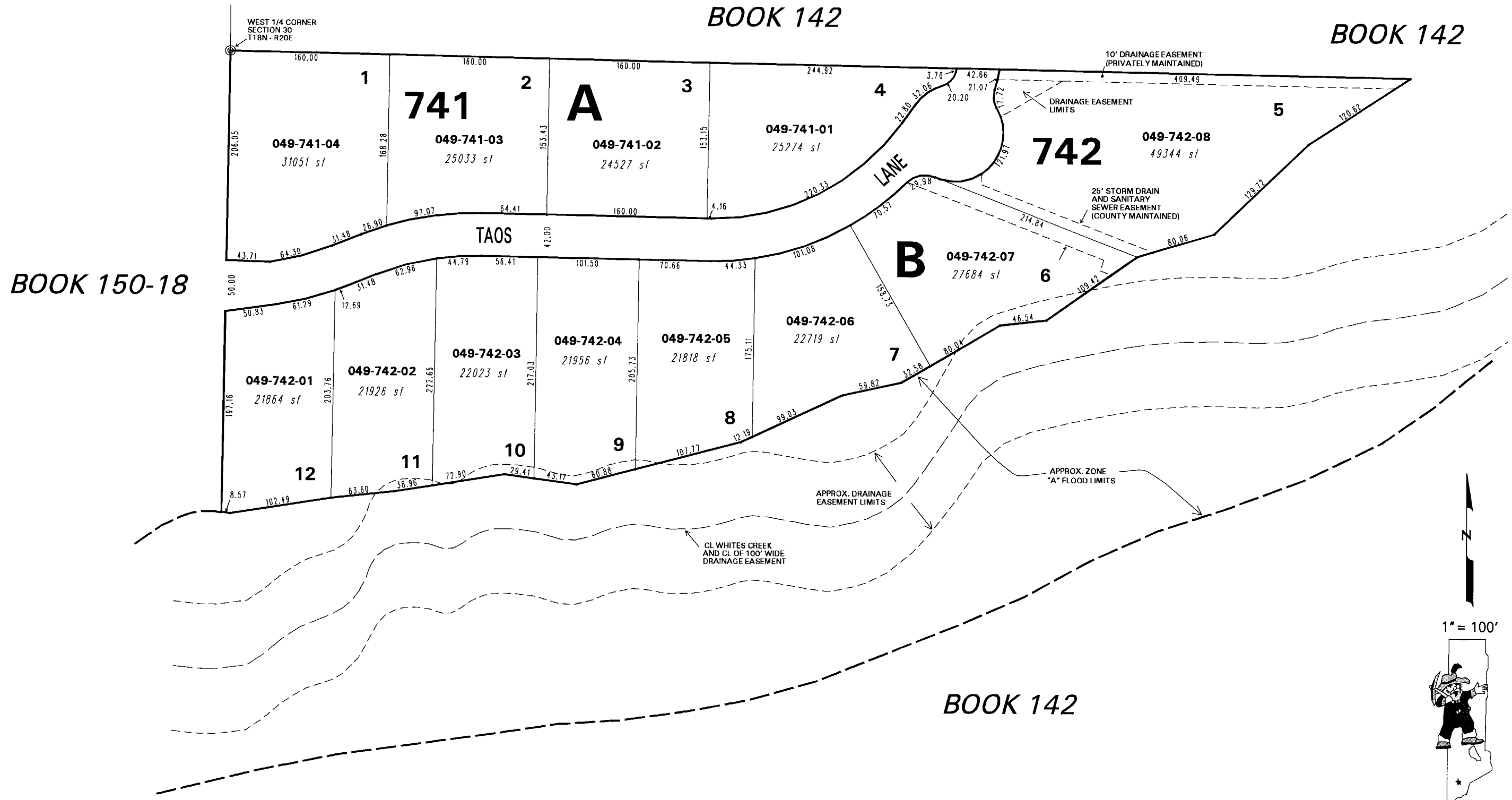


(#3197)
LANCER ESTATES UNIT 11
PORTION OF THE SW 1/4
SECTION 30, T18N - R20E



NOTE: This map is prepared for the use of the Washoe County Assessor for assessment and illustrative purposes only. It does not represent a survey of the premises. No liability is assumed as to the sufficiency or the accuracy of the data delineated hereon.

Office of Washoe County Assessor, Nevada - Joshua G. Wilson

This area previously shown on 49-40

NOTE: Areas of parcels which are less than 2 acres are shown in square feet.

Drawn by	KL 11/20/95
Revised	3/4/99 RLT 9/2/99 TWT
	NLH 12/14/07