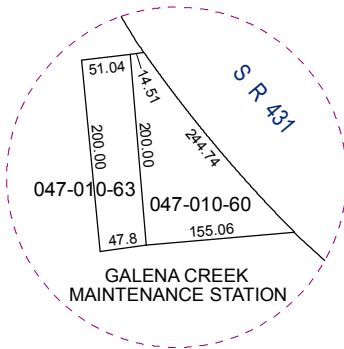
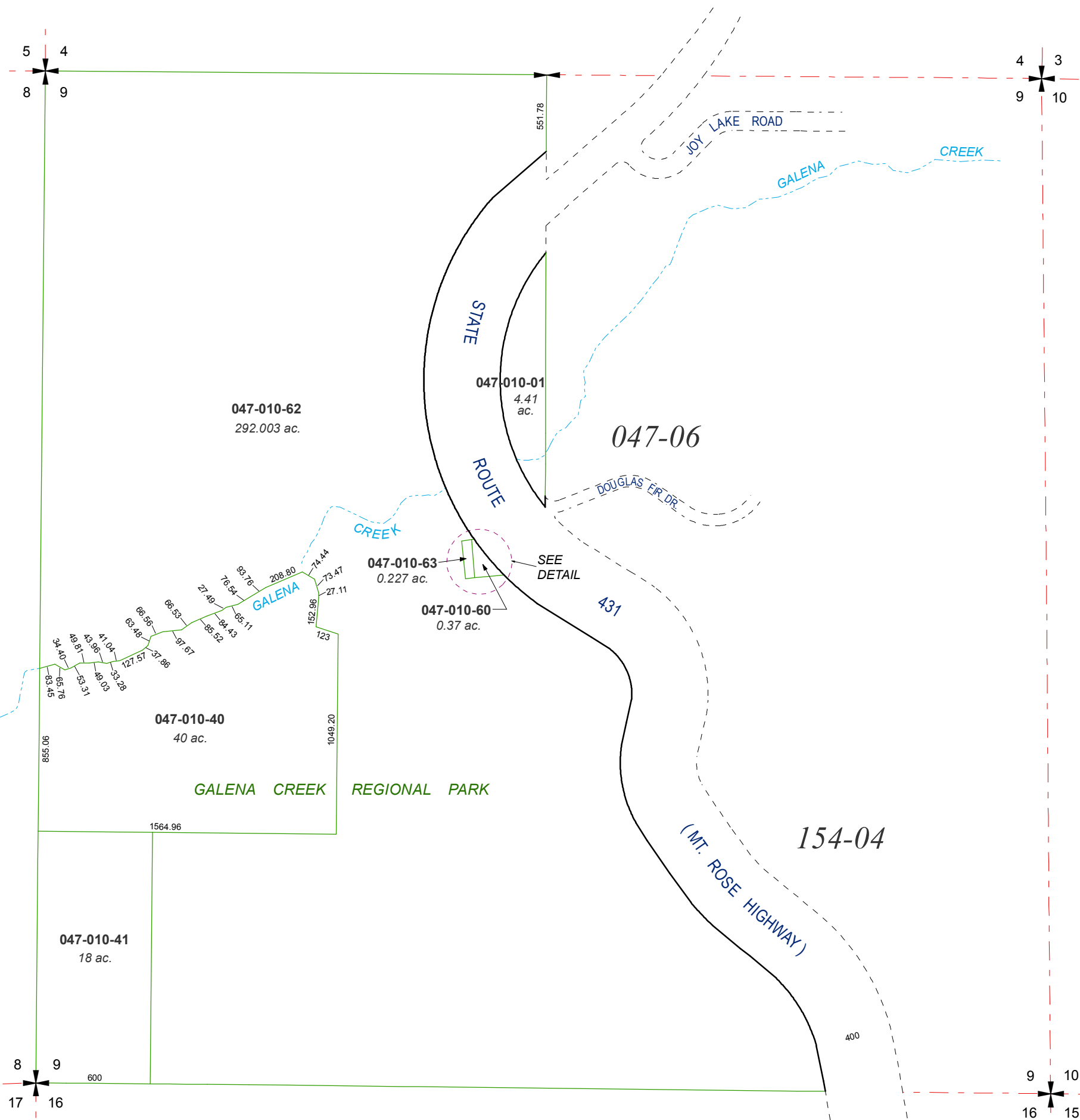


PORTION OF SECTION 9, T17N - R19E

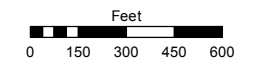


DETAIL
(Not to Scale)

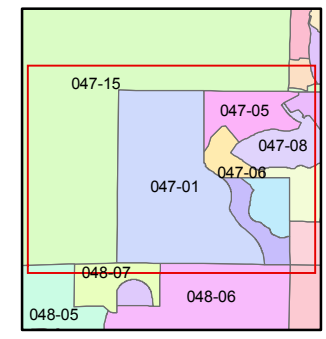
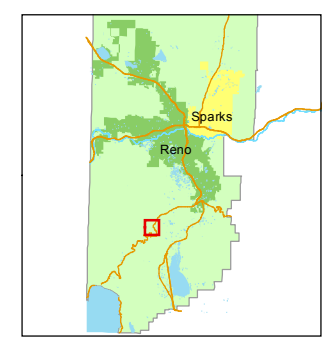
Assessor's Map Number
047-01

STATE OF NEVADA
WASHOE COUNTY
ASSESSOR'S OFFICE
Joshua G. Wilson, Assessor

1001 East Ninth Street
Building D
Reno, Nevada 89512
(775) 328-2231



1 inch = 600 feet



created by: KSB 3/06/2012

last updated: _____

area previously shown on map(s)
045-48

NOTE: This map was prepared for the use of the Washoe County Assessor for assessment and illustrative purposes only. It does not represent a survey of the premises. No liability is assumed as to the sufficiency or accuracy of the data delineated hereon.