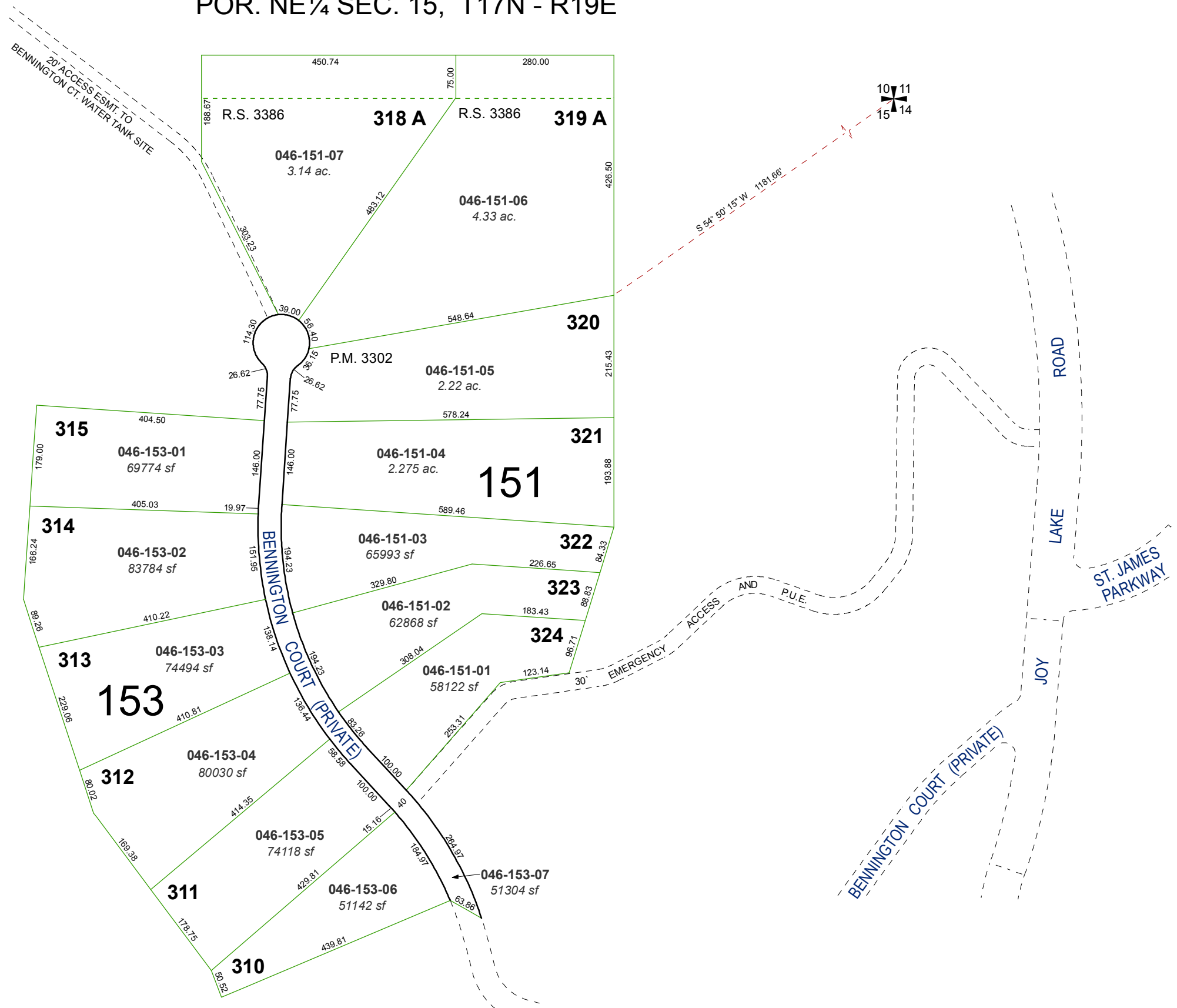


(#3314)

BENNINGTON COURT (THE WOODS - PHASE 3)

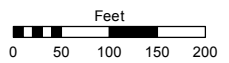
POR. NE¼ SEC. 15, T17N - R19E



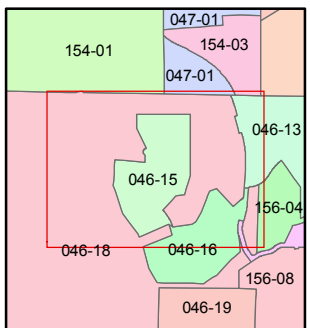
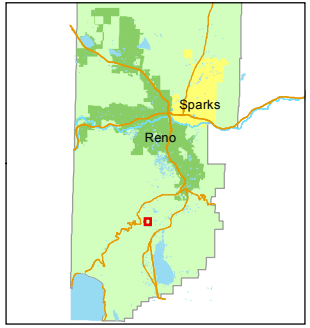
Assessor's Map Number
046-15

STATE OF NEVADA
WASHOE COUNTY
ASSESSOR'S OFFICE
Joshua G. Wilson, Assessor

1001 East Ninth Street
Building D
Reno, Nevada 89512
(775) 328-2231



1 inch = 200 feet



created by: TWT 10/19/2011

last updated: _____

area previously shown on map(s)
046-06

NOTE: This map was prepared for the use of the Washoe County Assessor for assessment and illustrative purposes only. It does not represent a survey of the premises. No liability is assumed as to the sufficiency or accuracy of the data delineated hereon.