

10 11  
15 14

N89° 31' 09"W  
1803.98'

20' COMMON AREA, PUE, PRIVATE DE, COUNTY SSE AND WE, AND PRIVATE EQUESTRIAN, PEDESTRIAN AND BICYCLE EASEMENT

046-143-19  
20874 sf

11

205.16

214.91

22.25

(#3261)

# ST. JAMES'S VILLAGE UNIT 1C

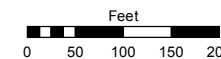
POR. OF N½ SECTION 14  
T17N - R19E

Assessor's Map Number

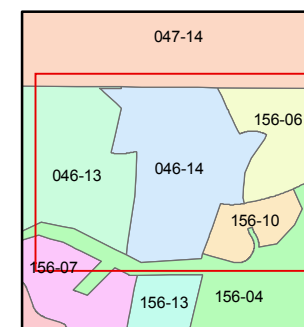
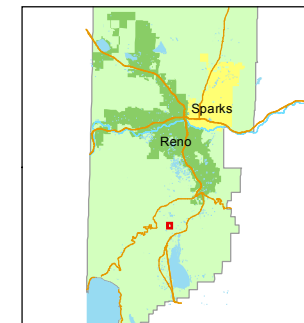
**046-14**

STATE OF NEVADA  
**WASHOE COUNTY**  
ASSESSOR'S OFFICE  
Joshua G. Wilson, Assessor

1001 East Ninth Street  
Building D  
Reno, Nevada 89512  
(775) 328-2231



1 inch = 200 feet



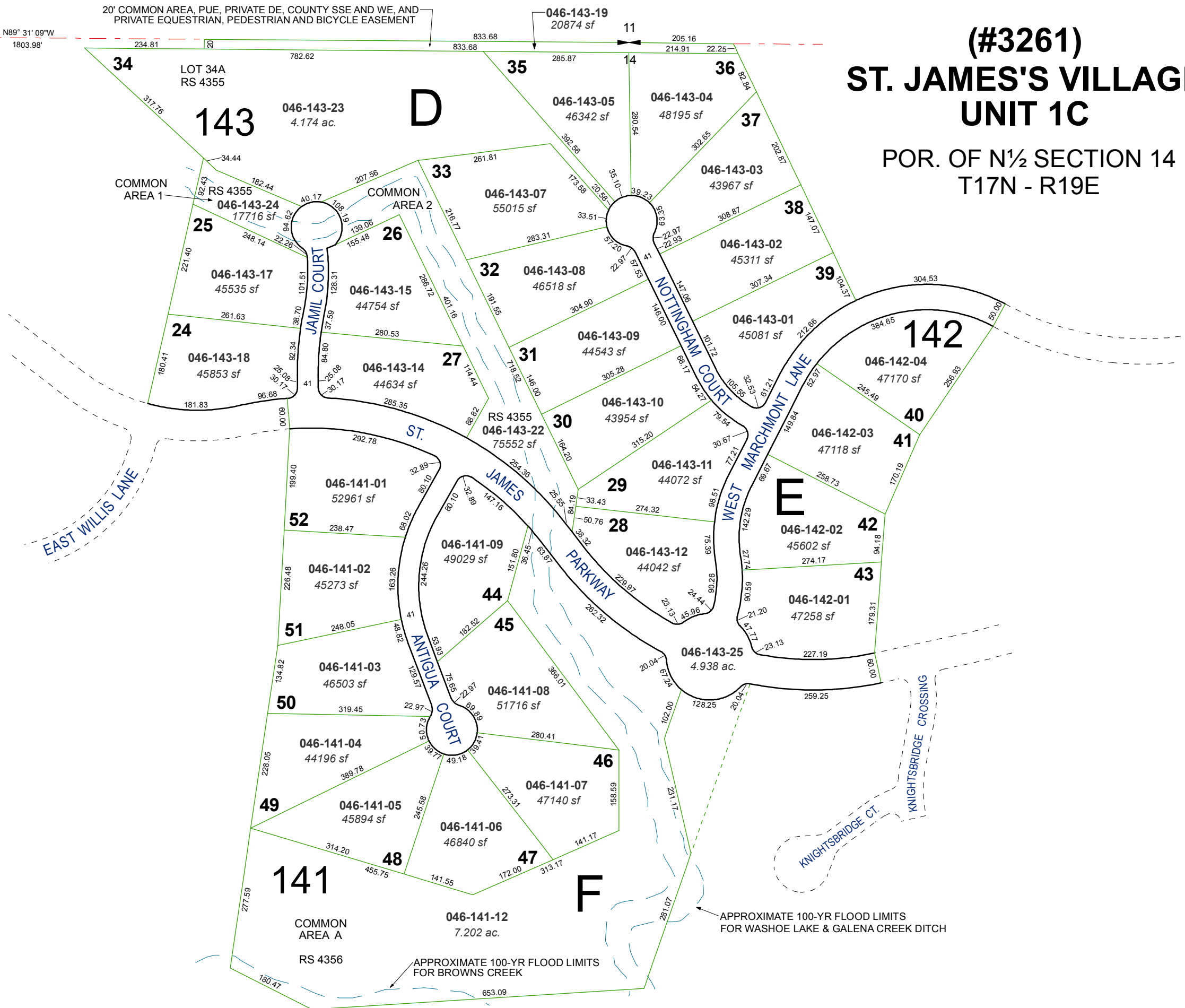
created by: KSB 10/07/11

last updated: \_\_\_\_\_

area previously shown on map(s)

046-06

NOTE: This map was prepared for the use of the Washoe County Assessor for assessment and illustrative purposes only. It does not represent a survey of the premises. No liability is assumed as to the sufficiency or accuracy of the data delineated hereon.



APPROXIMATE 100-YR FLOOD LIMITS FOR WASHOE LAKE & GALENA CREEK DITCH

APPROXIMATE 100-YR FLOOD LIMITS FOR BROWNS CREEK

NOTE: ALL ROADWAYS ARE PRIVATELY OWNED