

POR. SE 1/4 SEC. 13, T17N - R19E

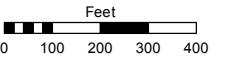
POR. SW 1/4 & SE 1/4 SEC. 18, T17N - R20E

Assessor's Map Number

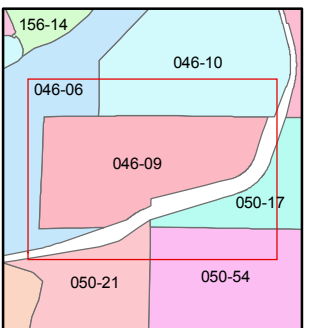
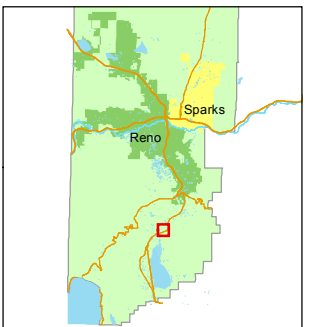
**046-09**

STATE OF NEVADA  
**WASHOE COUNTY**  
ASSESSOR'S OFFICE  
Joshua G. Wilson, Assessor

1001 East Ninth Street  
Building D  
Reno, Nevada 89512  
(775) 328-2231



1 inch = 400 feet



created by: CFB 03/20/2012

last updated: \_\_\_\_\_

area previously shown on map(s)  
\_\_\_\_\_

NOTE: This map was prepared for the use of the Washoe County Assessor for assessment and illustrative purposes only. It does not represent a survey of the premises. No liability is assumed as to the sufficiency or accuracy of the data delineated hereon.

046-10

U.S. GOVERNMENT LOTS

CENTER SEC. 18

046-090-01  
0.80 ac.

PAT. NO. 27-2005-0169

046-090-27  
17.09 ac.

6 046-090-09 4.4 ac.	5 046-090-08 5.0 ac.	4 046-090-07 5.0 ac.	3 046-090-06 5.0 ac.	046-090-05 5.0 ac.	046-090-04 5.0 ac.
----------------------------	----------------------------	----------------------------	----------------------------	-----------------------	-----------------------

7 046-090-10 4.44 ac.	8 046-090-11 5.0 ac.	9 046-090-12 5.0 ac.	10 046-090-13 2.96 ac.	046-090-17 5.0 ac.	046-090-18 5.0 ac.
-----------------------------	----------------------------	----------------------------	------------------------------	-----------------------	-----------------------

046-090-14 0.99 ac.	046-090-15 0.87 ac.
------------------------	------------------------

046-090-16 0.18 ac.	046-090-23 0.91 ac.	046-090-22 1.23 ac.
------------------------	------------------------	------------------------

046-090-25  
16.56 ac.

046-090-24  
1.10 ac.

R/W Grant per  
Doc. #3570711  
6.88 ac.

046-06

Brown's Creek

Creek

Steamboat

OLD V. & T. RAILROAD  
R/W

046-090-26  
154.815 ac.

R 19 E  
R 20 E

U.S.

HIGHWAY

395

BOOK 50

11 1

13 18  
24 19

N89° 25' 53"E  
2590.22

172.96

494.87

507.69

340.21

104.16

96.25

527.16

44.58

211.03

29.43

287.42

116.68

WILLBUCK RD