

PORTION S 1/2 SECTION 23, T17N - R19E

17

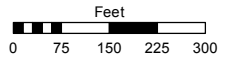
08

Assessor's Map Number

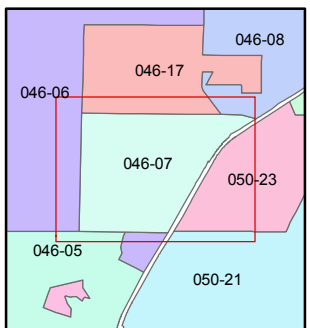
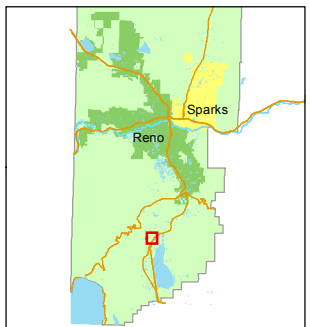
046-07

STATE OF NEVADA
WASHOE COUNTY
ASSESSOR'S OFFICE
 Joshua G. Wilson, Assessor

1001 East Ninth Street
 Building D
 Reno, Nevada 89512
 (775) 328-2231



1 inch = 300 feet



created by: CFB 11/08/2010

last updated: CFB 02/08/2012

area previously shown on map(s)

NOTE: This map was prepared for the use of the Washoe County Assessor for assessment and illustrative purposes only. It does not represent a survey of the premises. No liability is assumed as to the sufficiency or accuracy of the data delineated hereon.

06

05

06

Quitclaim Deed #3939087
 recorded 11/02/2010

046-070-67
 76.180 ac.

046-070-59
 8.07 ac.
 POR. PAR.1 P.M.1349

046-070-63
 6.08 ac.
 POR. PAR.3 P.M.531 R.S.5278

046-070-64
 4.385 ac.
 POR. PAR.2 P.M.531 R.S.5278

046-070-65
 2.689 ac.
 POR. PAR.1 P.M.531 R.S.5278

046-070-66
 2.609 ac.
 POR. PAR.1 P.M.531 R.S.5278

046-070-11
 1.00 ac.
 POR. PAR. A P.M. 1900

046-070-12
 1.00 ac.
 POR. PAR. A P.M. 1900

046-070-46
 2.37 ac.
 POR. PAR. A P.M. 1900

046-070-55
 .550 ac.
 POR. PAR.1 P.M.531

046-070-56
 2.386 ac.
 POR. PAR.1 P.M.531

046-070-57
 2.274 ac.
 POR. PAR.1 P.M.531

046-070-58
 2.326 ac.
 POR. PAR.1 P.M.531

046-070-30
 .39 ac.
 PAR.2 P.M.1350

046-070-40
 .087 ac.
 PAR.1 P.M.1350

046-070-19
 1.0 ac.
 PAR.2 P.M.1349

046-070-62
 2.87 ac.
 PAR.3 P.M.1349

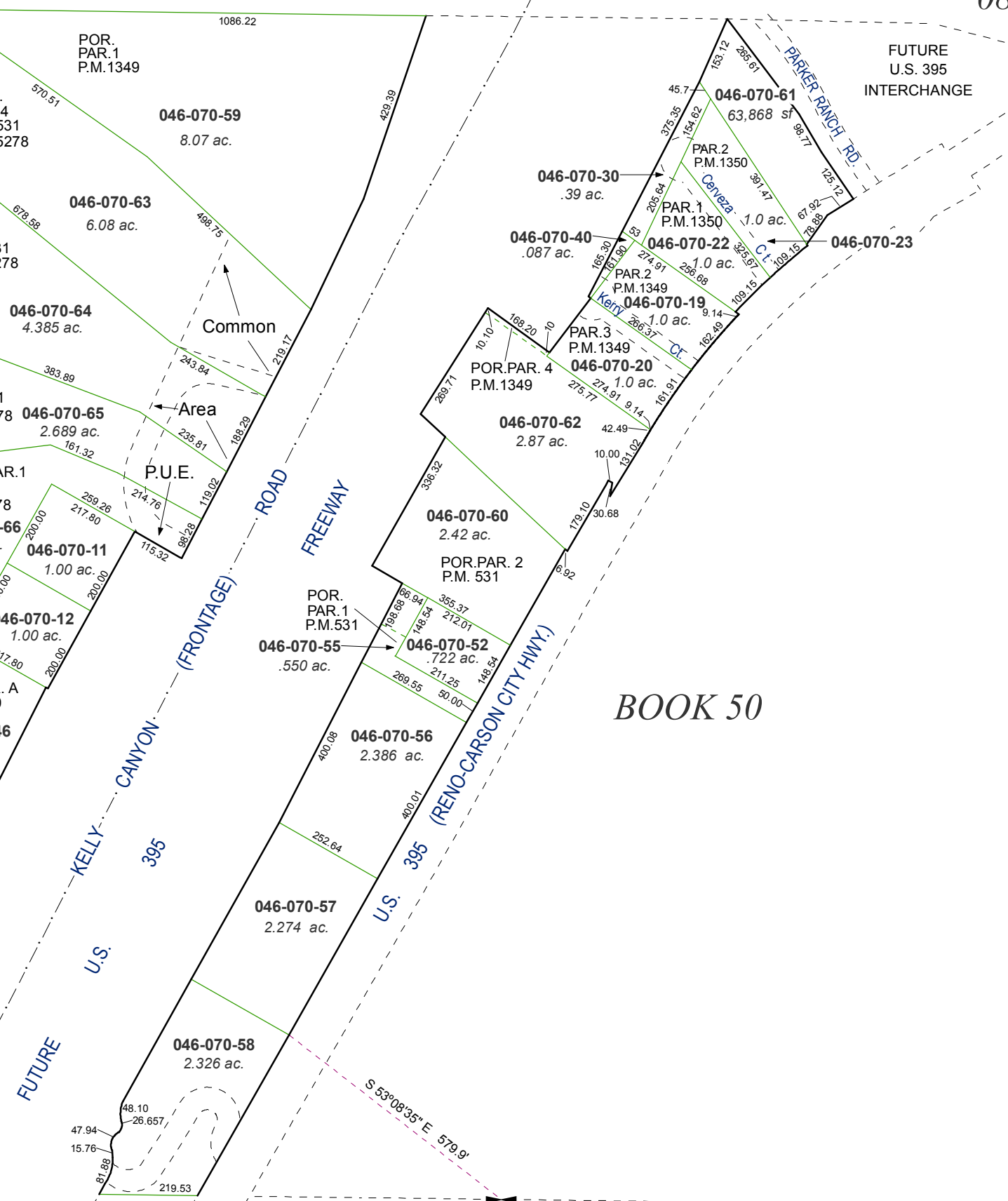
046-070-60
 2.42 ac.
 POR. PAR. 2 P.M. 531

046-070-52
 .722 ac.
 POR. PAR.1 P.M.531

046-070-61
 1.0 ac.
 PAR.2 P.M.1350

FUTURE U.S. 395 INTERCHANGE

BOOK 50



S 53°08'35" E 579.9'