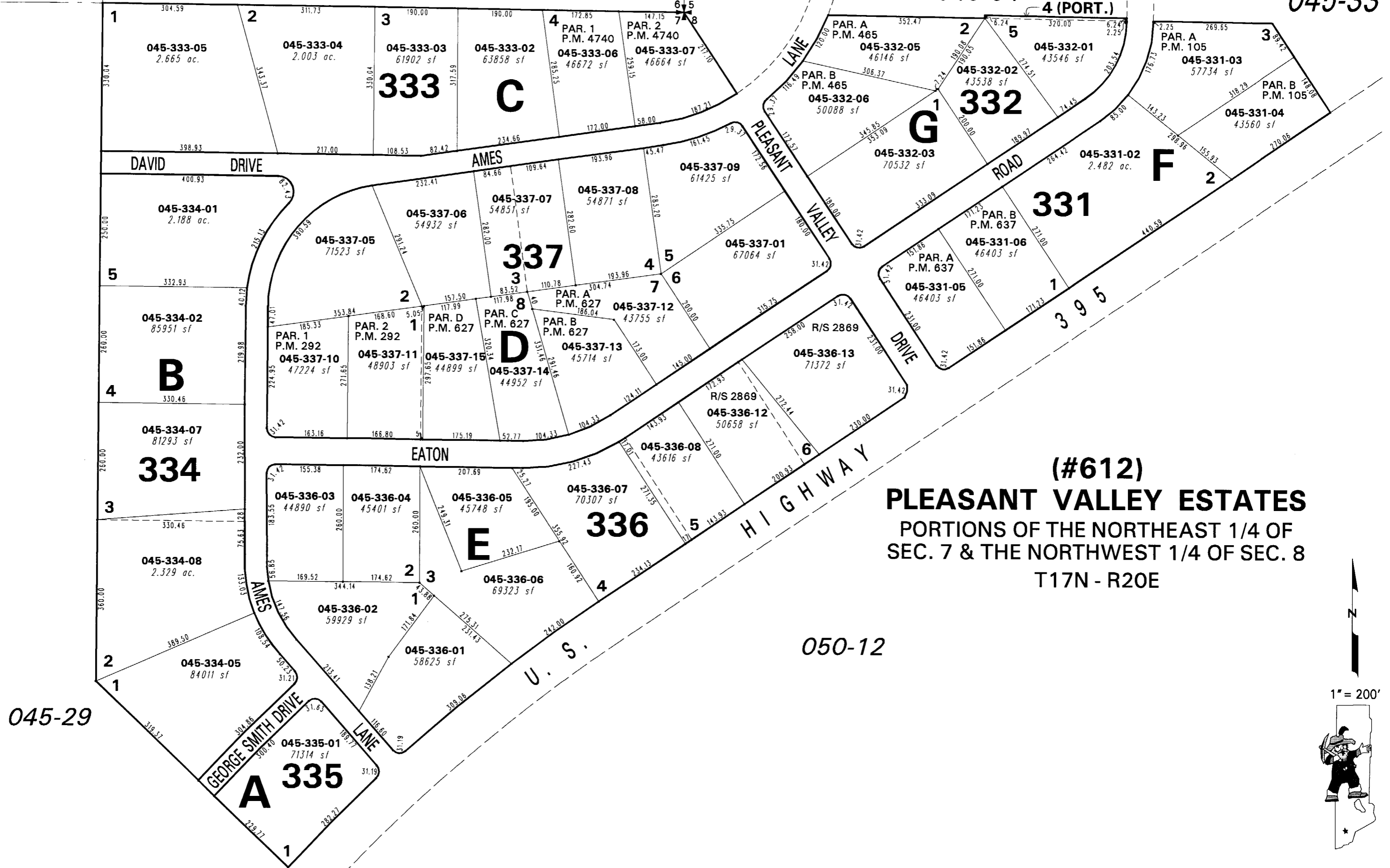


045-25

045-56

045-34

045-33



**(#612)
PLEASANT VALLEY ESTATES**
PORTIONS OF THE NORTHEAST 1/4 OF
SEC. 7 & THE NORTHWEST 1/4 OF SEC. 8
T17N - R20E

050-12

045-29

NOTE: This map is prepared for the use of the Washoe County Assessor for assessment and illustrative purposes only. It does not represent a survey of the premises. No liability is assumed as to the sufficiency or the accuracy of the data delineated hereon.

Office of Washoe County Assessor, Nevada - Joshua G. Wilson

This area previously shown on _____

NOTE: Areas of parcels which are less than 2 acres are shown in square feet.

Drawn by	TWT	04/06/07
Revised		

