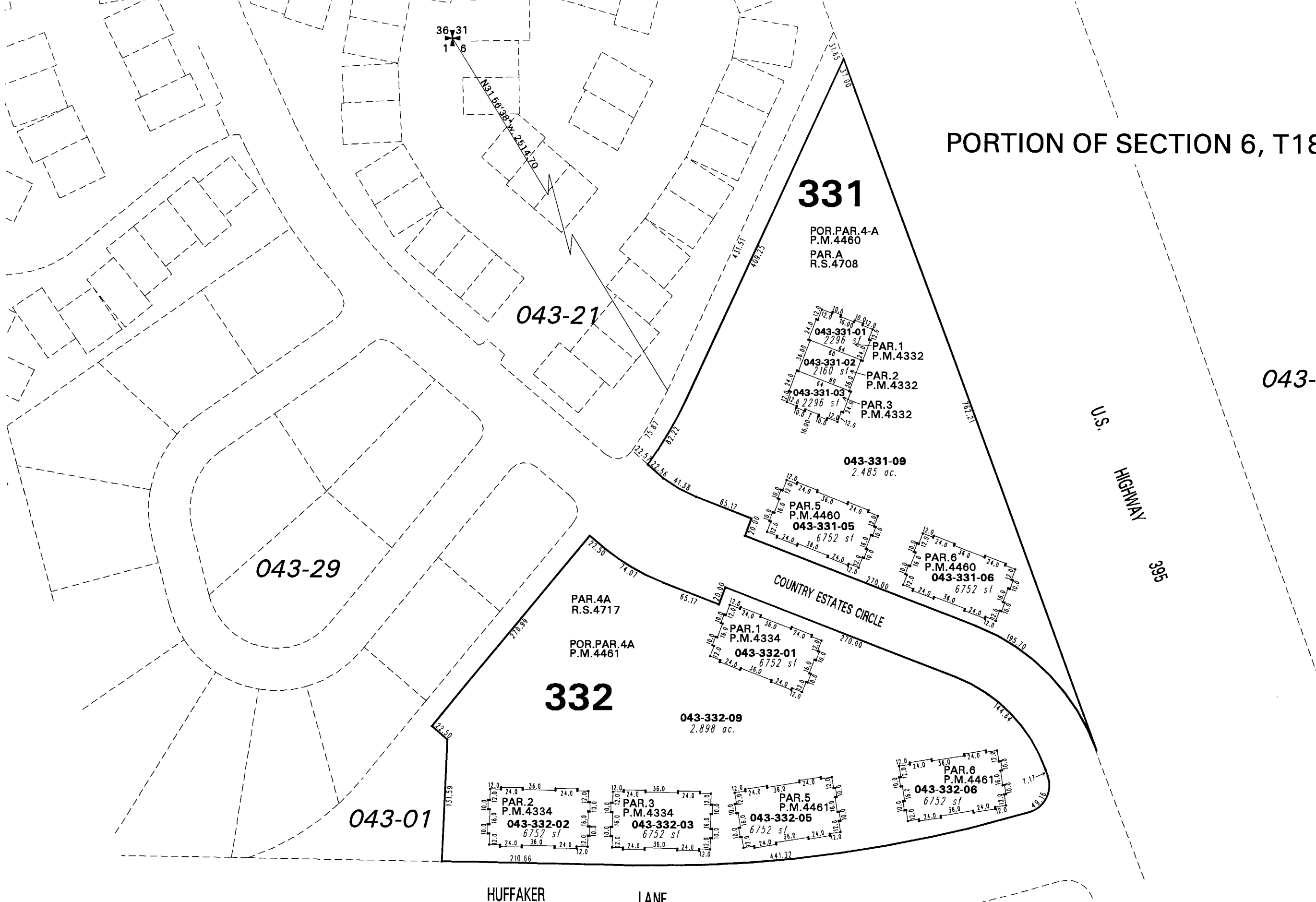


PORTION OF SECTION 6, T18N - R20E



043-01

043-29

043-21

043-01

**331**

**332**

POR. PAR. 4-A  
P.M. 4460  
PAR. A  
R.S. 4708

PAR. 4A  
R.S. 4717

POR. PAR. 4A  
P.M. 4461

PAR. 1  
P.M. 4332

PAR. 2  
P.M. 4332

PAR. 3  
P.M. 4332

043-331-09  
2.485 ac.

PAR. 5  
P.M. 4460  
043-331-05  
6752 sf

PAR. 6  
P.M. 4460  
043-331-06  
6752 sf

PAR. 1  
P.M. 4334  
043-332-01  
6752 sf

043-332-09  
2.898 ac.

PAR. 2  
P.M. 4334  
043-332-02  
6752 sf

PAR. 3  
P.M. 4334  
043-332-03  
6752 sf

PAR. 5  
P.M. 4461  
043-332-05  
6752 sf

PAR. 6  
P.M. 4461  
043-332-06  
6752 sf

U.S.  
HIGHWAY  
395

COUNTRY ESTATES CIRCLE

HUFFAKER  
LANE

043-31

Office of Washoe County Assessor, Nevada - Robert W. McGowan

This area previously shown on 043-01

NOTE: This map is prepared for the use of the Washoe County Assessor for assessment and illustrative purposes only. It does not represent a survey of the premises. No liability is assumed as to the sufficiency or the accuracy of the data delineated hereon.

NOTE: Areas of parcels which are less than 2 acres are shown in square feet.

Drawn by	CFB 4/5/2005
Revised	CFB 10/14/2005 CFB 6/30/2006
	CFB 7/14/2006

