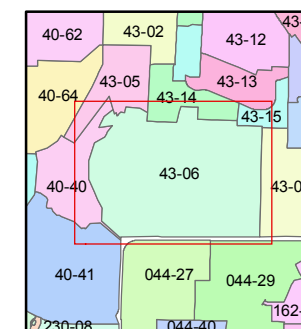
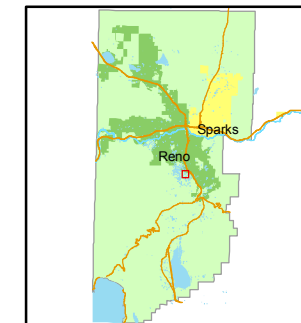


1 inch = 200 feet



created by: NLH 10/28/2009

last updated: _____

area previously shown on map(s)

NOTE: This map was prepared for the use of the Washoe County Assessor for assessment and illustrative purposes only. It does not represent a survey of the premises. No liability is assumed as to the sufficiency or accuracy of the data delineated hereon.

**POR. SEC'S. 1 & 12, T18N - R19E
POR. SEC'S. 6 & 7, T18N - R20E**

**BOOK
40**

BOOK 44

043-05

043-14

043-15

043-07

062

061

PAR. 1
R.S. 4293

PAR. 3
P.M. 942

PAR. 1
P.M. 942

PAR. 2
P.M. 942

PAR. 1
P.M. 1587

PAR. 2
P.M. 1587

PAR. 4
P.M. 931

043-062-20
5.16 ac.

043-062-06
4.628 ac.

043-062-05
2.50 ac.

043-062-04
2.50 ac.

043-062-16
2.5 ac.

043-062-17
2.5 ac.

043-062-01
2.50 ac.

043-062-15
2.09 ac.

043-062-08
4.001 ac.

043-062-09
2.505 ac.

043-061-07
2.40 ac.

043-061-08
2.40 ac.

043-061-01
5.447 ac.

043-062-14
2.0 ac.

043-062-10
2.951 ac.

043-061-05
21.975 ac.

043-061-02
3.4 ac.

043-062-13
2.51 ac.

PAR. 1
P.M. 2479

043-062-18
3.8588 ac.

043-061-04
5.791 ac.

043-062-12
3.0 ac.

PAR. 2
P.M. 2479

043-062-19
2.5001 ac.

043-061-03
3.5 ac.

R. 18 E.
R. 19 E.

Road Easement Per Doc. #1354104

HOLCOMB

LANE

MILE CIRCLE

DRIVE

CIRCLE

MILE

Reno

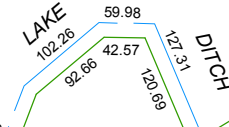
City

Limits

DRIVE

CIRCLE

MILE



13.87

19.21

206.97

549.07

747.11

673.54

13.52

13.87

19.21

206.97

549.07

747.11

673.54

13.52

13.87

19.21

206.97

549.07

747.11

673.54

13.52

13.87

19.21

206.97

549.07

747.11

673.54

13.52

13.87

19.21

206.97

549.07

747.11

673.54

13.52

13.87

19.21

206.97

549.07

747.11

673.54

13.52

13.87

19.21

206.97

549.07

747.11

673.54

13.52

13.87

19.21

206.97

549.07

747.11

673.54

13.52

13.87

19.21

206.97

549.07

747.11

673.54

13.52

13.87

19.21

206.97

549.07

747.11

673.54

13.52

13.87

19.21

206.97

549.07

747.11

673.54

13.52

13.87

19.21

206.97

549.07

747.11

673.54

13.52

13.87

19.21

206.97

549.07

747.11

673.54

13.52

13.87

19.21

206.97

549.07

747.11

673.54

13.52

13.87

19.21

206.97

549.07

747.11

673.54

13.52

13.87

19.21

206.97

549.07

747.11

673.54

13.52

13.87

19.21

206.97

549.07

747.11

673.54

13.52

13.87

19.21

206.97

549.07

747.11

673.54

13.52

13.87

19.21

206.97

549.07

747.11

673.54

13.52

13.87

19.21

206.97

549.07

747.11

673.54

13.52

13.87

19.21

206.97

549.07

747.11

673.54

13.52

13.87

19.21

206.97

549.07

747.11

673.54

13.52

13.87

19.21

206.97

549.07

747.11

673.54

13.52

13.87

19.21

206.97

549.07

747.11

673.54

13.52

13.87

19.21

206.97

549.07

747.11

673.54

13.52

13.87

19.21

206.97

549.07

747.11

673.54

13.52

13.87

19.21

206.97

549.07

747.11

673.54

13.52

13.87

19.21

206.97

549.07

747.11

673.54

13.52

13.87

19.21

206.97

549.07

747.11

673.54

13.52

13.87

19.21

206.97

549.07

747.11

673.54

13.52