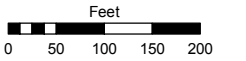


Assessor's Map Number

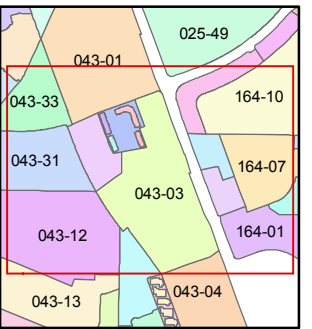
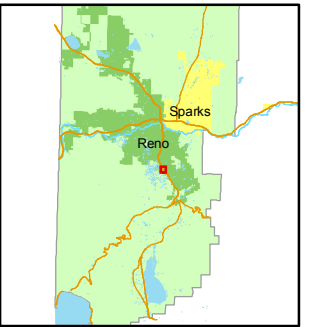
043-03

STATE OF NEVADA
WASHOE COUNTY
ASSESSOR'S OFFICE
Joshua G. Wilson, Assessor

1001 East Ninth Street
Building D
Reno, Nevada 89512
(775) 328-2231



1 inch = 200 feet



created by: KSB 2/24/11

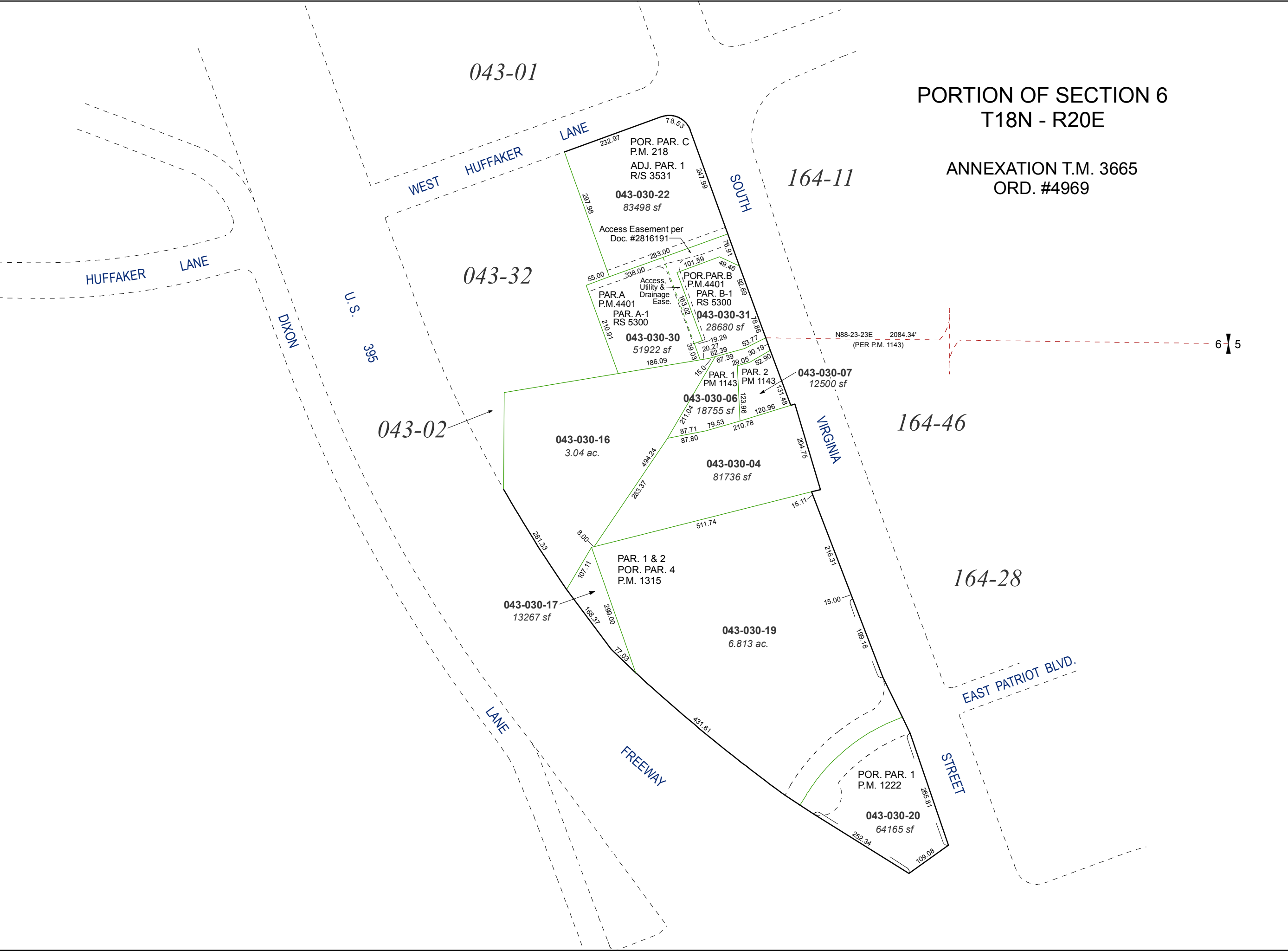
last updated: _____

area previously shown on map(s)

NOTE: This map was prepared for the use of the Washoe County Assessor for assessment and illustrative purposes only. It does not represent a survey of the premises. No liability is assumed as to the sufficiency or accuracy of the data delineated hereon.

PORTION OF SECTION 6
T18N - R20E

ANNEXATION T.M. 3665
ORD. #4969



043-01

WEST HUFFAKER LANE

043-32

HUFFAKER LANE

DIXON

U.S.

365

043-02

043-030-16
3.04 ac.

043-030-04
81736 sf

PAR. 1 & 2
POR. PAR. 4
P.M. 1315

043-030-17
13267 sf

043-030-19
6.813 ac.

LANE

FREEWAY

POR. PAR. 1
P.M. 1222

043-030-20
64165 sf

STREET

EAST PATRIOT BLVD.

164-11

SOUTH

POR. PAR. C
P.M. 218
ADJ. PAR. 1
R/S 3531

043-030-22
83498 sf

Access Easement per
Doc. #2816191

PAR. A
P.M. 4401
PAR. A-1
RS 5300

043-030-30
51922 sf

POR. PAR. B
P.M. 4401
PAR. B-1
RS 5300

043-030-31
28680 sf

043-030-06
18755 sf

043-030-07
12500 sf

164-46

VIRGINIA

164-28

N88-23-23E 2084.34'
(PER P.M. 1143)

6 1/2