

222-08

42-42

(#3906) BELSERA

A PORTION OF THE SE 1/4 OF SEC. 27 AND
AND A PORTION OF THE NE 1/4 OF THE NE 1/4 OF SEC. 34,
T19N - R19E

CITY LIMITS

RENO

42-01

42-41

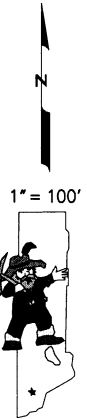
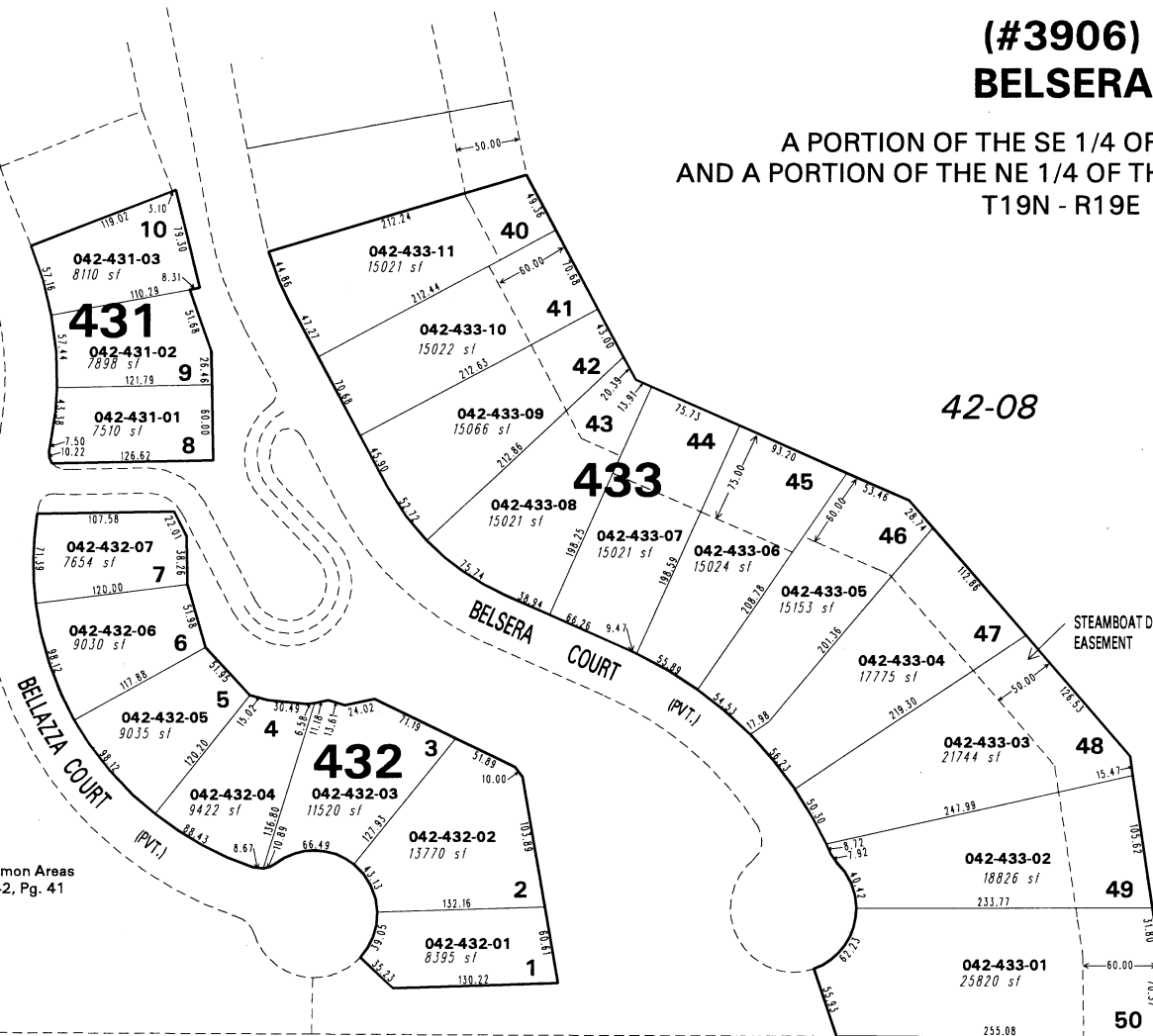
42-08

42-09

42-10

NOTE: Streets and Common Areas
parceled on Bk. 42, Pg. 41

NE 1/16 SEC. 34



NOTE: This map is prepared for the use of the Washoe County Assessor for assessment and illustrative purposes only. It does not represent a survey of the premises. No liability is assumed as to the sufficiency or the accuracy of the data delineated hereon.

Office of Washoe County Assessor, Nevada - Robert W. McGowan

This area previously shown on 42-01

NOTE: Areas of parcels which are less than 2 acres are shown in square feet.

Drawn by	HCS 3/5/01
Revised	