

039-93-S1

WEST SEVENTH STREET

(#4816)

CANTABRIA TOWNHOMES

PORTION OF THE SE 1/4 OF SEC. 5
T19N - R19E

039-49

DRIVE

HIGHLANDS

SIERRA

039-93

DRIVE

(PRIVATE STREET)

931

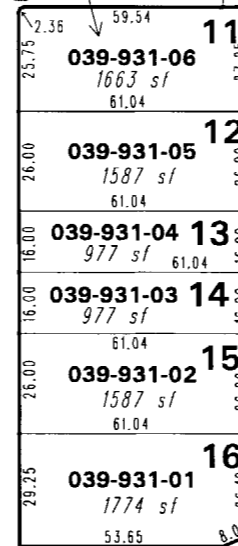
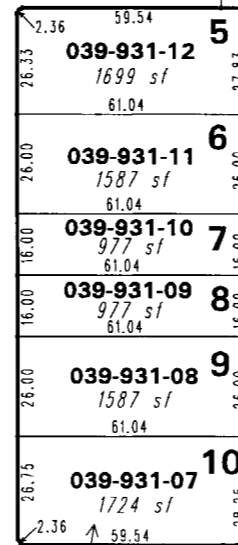
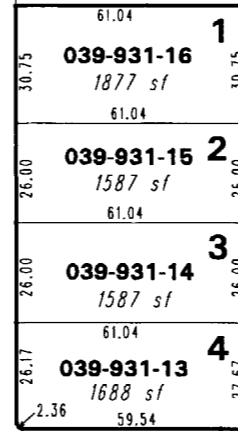
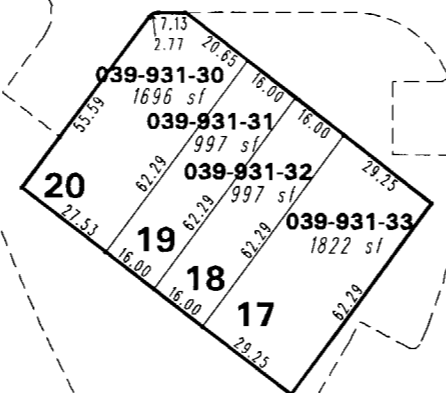
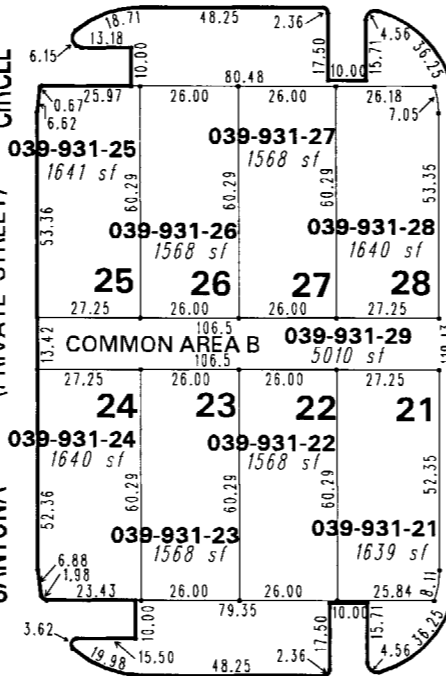
ALTAMIRA

039-93

CIRCLE

(PRIVATE STREET)

SANTONA



039-05



1" = 50'



NOTE: This map is prepared for the use of the Washoe County Assessor for assessment and illustrative purposes only. It does not represent a survey of the premises. No liability is assumed as to the sufficiency or the accuracy of the data delineated hereon.

Office of Washoe County Assessor, Nevada - Joshua G. Wilson

This area previously shown on 039-05

Drawn by	JL 08/30/07
Revised	

NOTE: Areas of parcels which are less than 2 acres are shown in square feet.