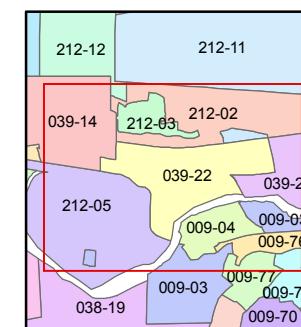
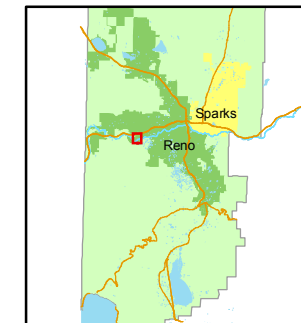


1 inch = 300 feet



created by: TWT 10/13/2009

last updated: KSB 7/22/11

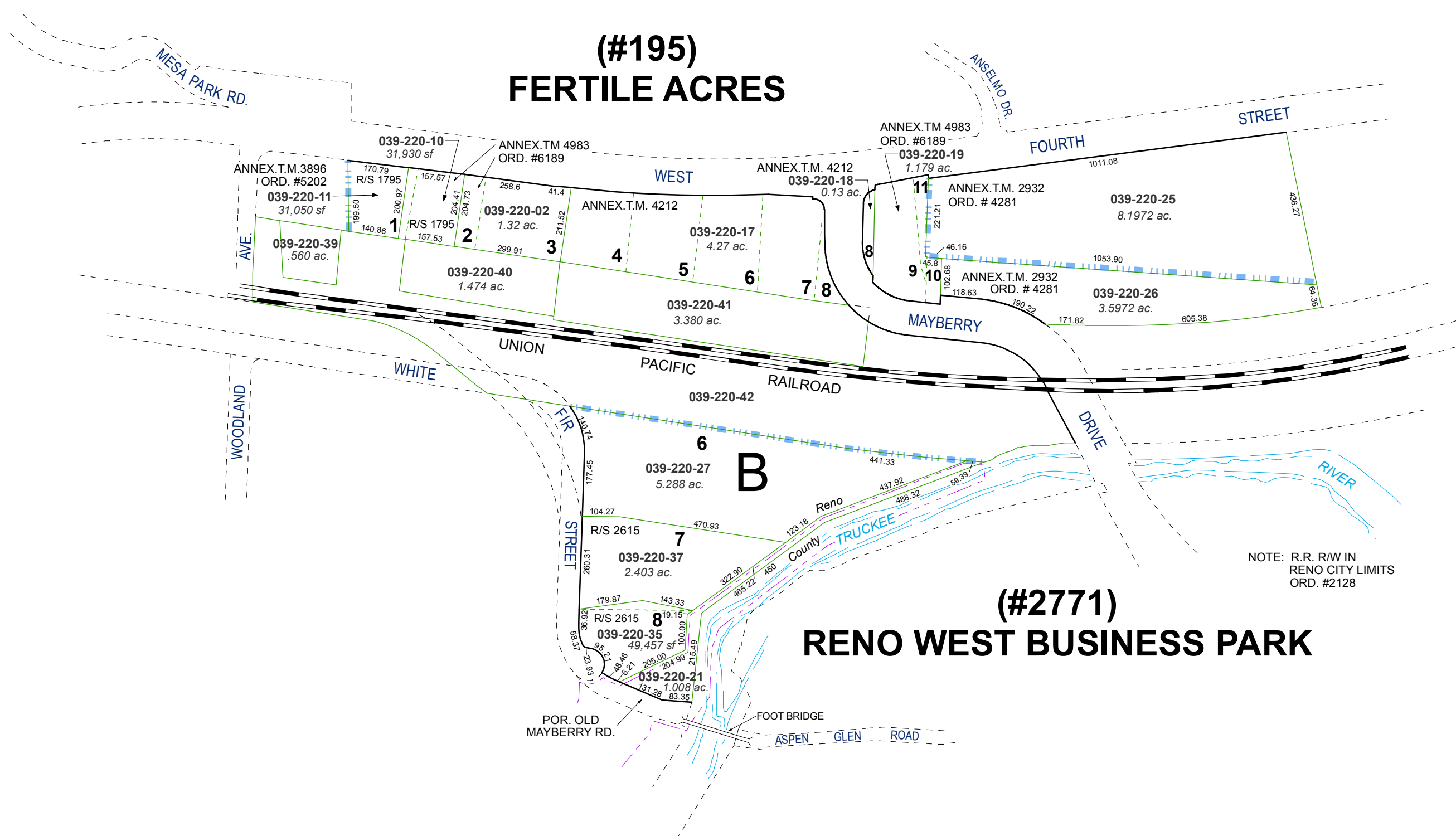
area previously shown on map(s)

NOTE: This map was prepared for the use of the Washoe County Assessor for assessment and illustrative purposes only. It does not represent a survey of the premises. No liability is assumed as to the sufficiency or accuracy of the data delineated hereon.

PORTION OF S 1/2 OF SEC. 18
T19N - R19E

**(#195)
FERTILE ACRES**

**(#2771)
RENO WEST BUSINESS PARK**



NOTE: R.R. RW IN
RENO CITY LIMITS
ORD. #2128