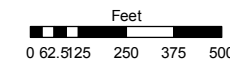


PORTION W 1/2 OF SECTION 16, T19N - R19E N 1/2 AND PORTION OF THE S 1/2 SECTION 17, T19N - R19E

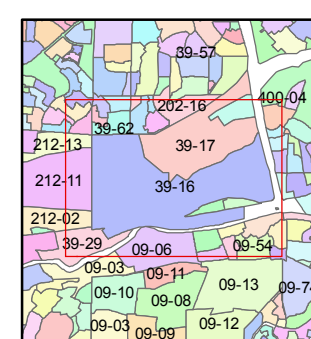
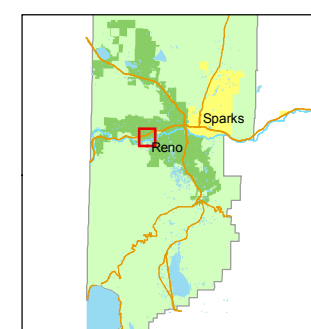
BOOK 202

STATE OF NEVADA
WASHOE COUNTY
ASSESSOR'S OFFICE
Joshua G. Wilson, Assessor

1001 East Ninth Street
Building D
Reno, Nevada 89512
(775) 328-2231



1 inch = 500 feet

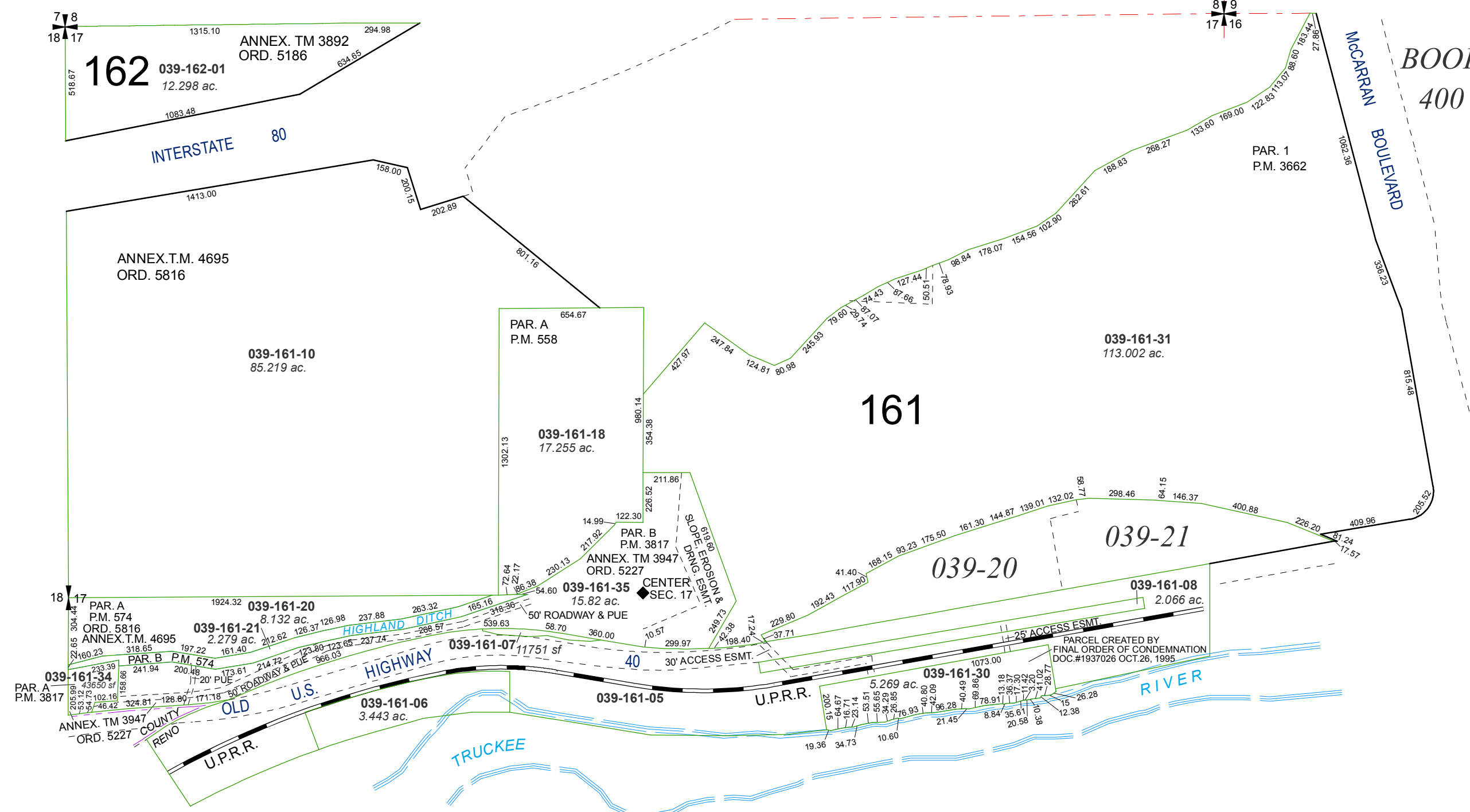


created by: TWT 10/12/2009

last updated: _____

area previously shown on map(s) _____

NOTE: This map was prepared for the use of the Washoe County Assessor for assessment and illustrative purposes only. It does not represent a survey of the premises. No liability is assumed as to the sufficiency or accuracy of the data delineated hereon.



BOOK 400