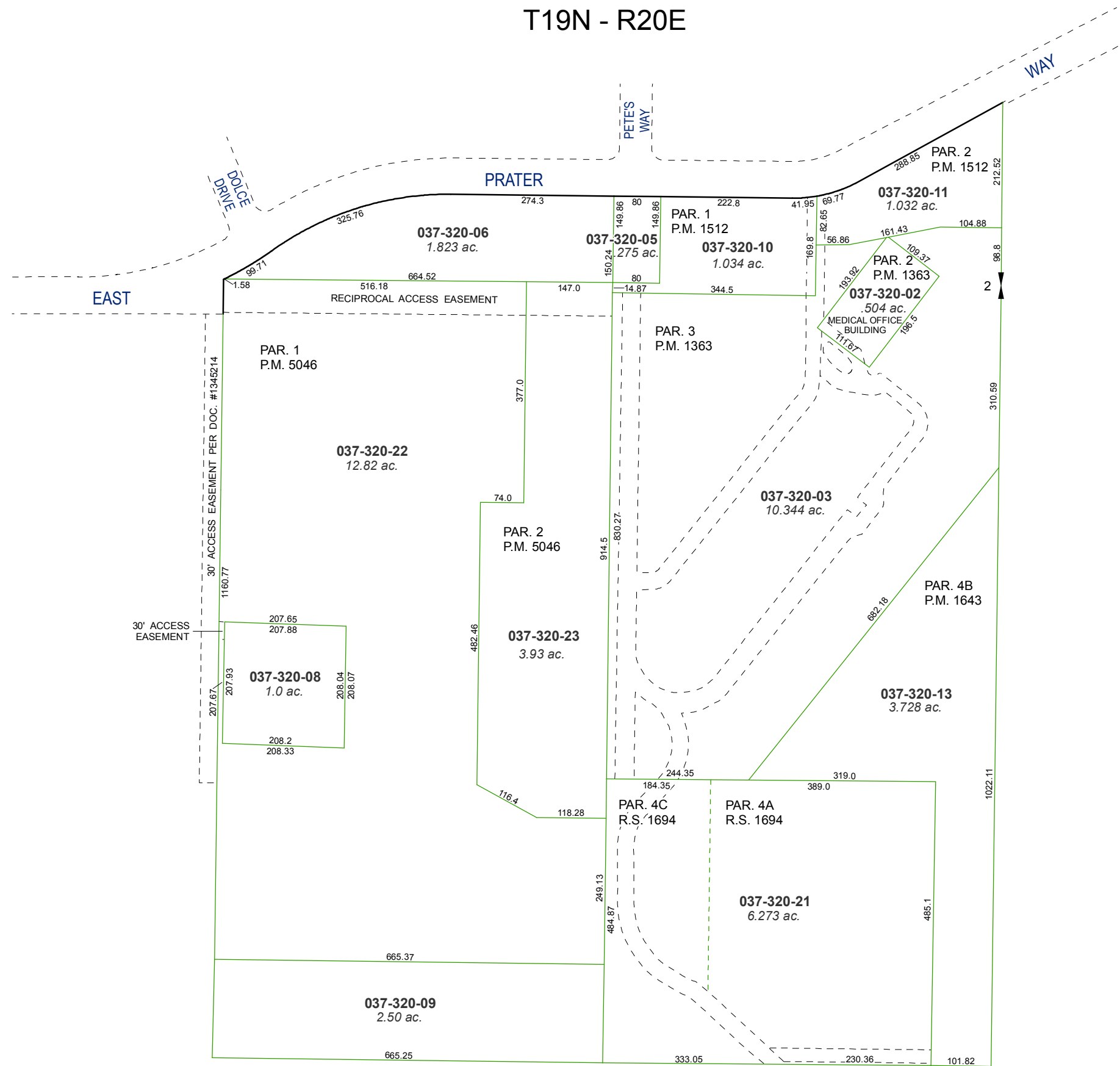


PORTIONS OF THE S 1/2 OF THE NE 1/4
AND THE NE 1/4 OF THE SE 1/4 OF SEC. 2
T19N - R20E

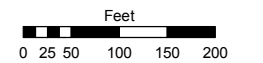


Assessor's Map Number

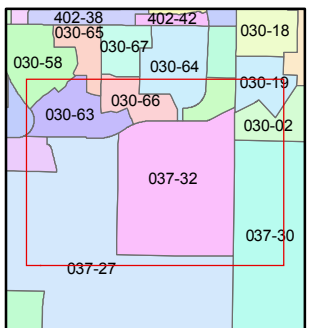
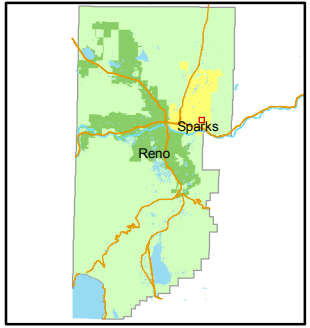
037-32

STATE OF NEVADA
WASHOE COUNTY
ASSESSOR'S OFFICE
Joshua G. Wilson, Assessor

1001 East Ninth Street
Building D
Reno, Nevada 89512
(775) 328-2231



1 inch = 200 feet



created by: NLH 7/15/2010

last updated: NLH 5/03/11

area previously shown on map(s)

NOTE: This map was prepared for the use of the Washoe County Assessor for assessment and illustrative purposes only. It does not represent a survey of the premises. No liability is assumed as to the sufficiency or accuracy of the data delineated herein.