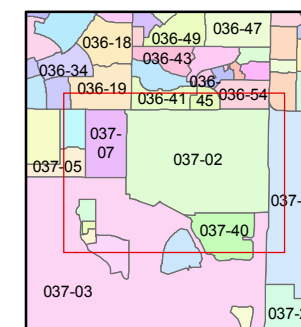
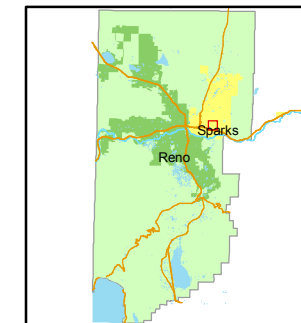




1 inch = 300 feet

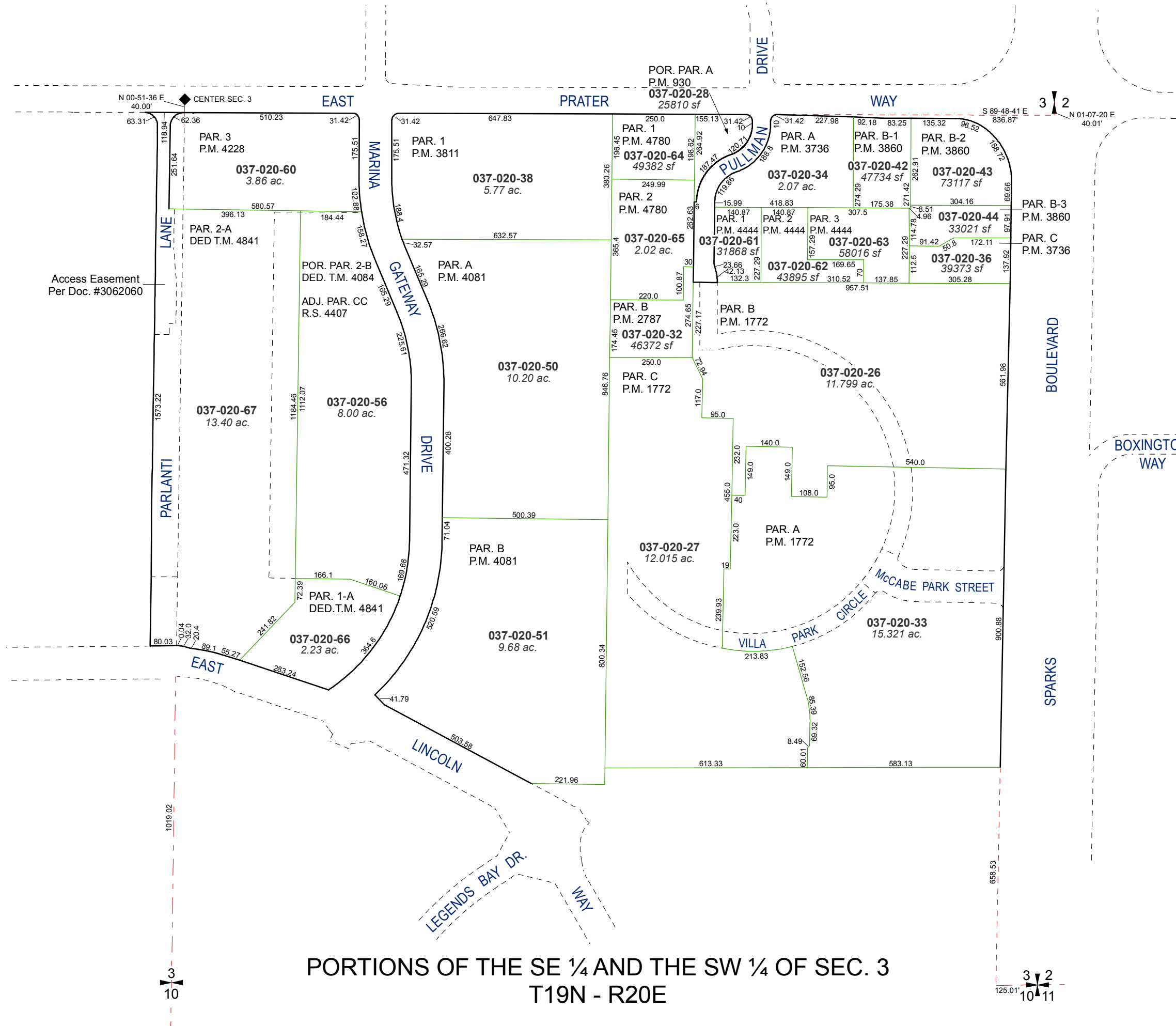


created by: NLH 7/12/2010

last updated: NLH 4/13/2011

area previously shown on map(s)

NOTE: This map was prepared for the use of the Washoe County Assessor for assessment and illustrative purposes only. It does not represent a survey of the premises. No liability is assumed as to the sufficiency or accuracy of the data delineated hereon.



**PORTIONS OF THE SE 1/4 AND THE SW 1/4 OF SEC. 3
T19N - R20E**

3
10

3
10
125.01
11