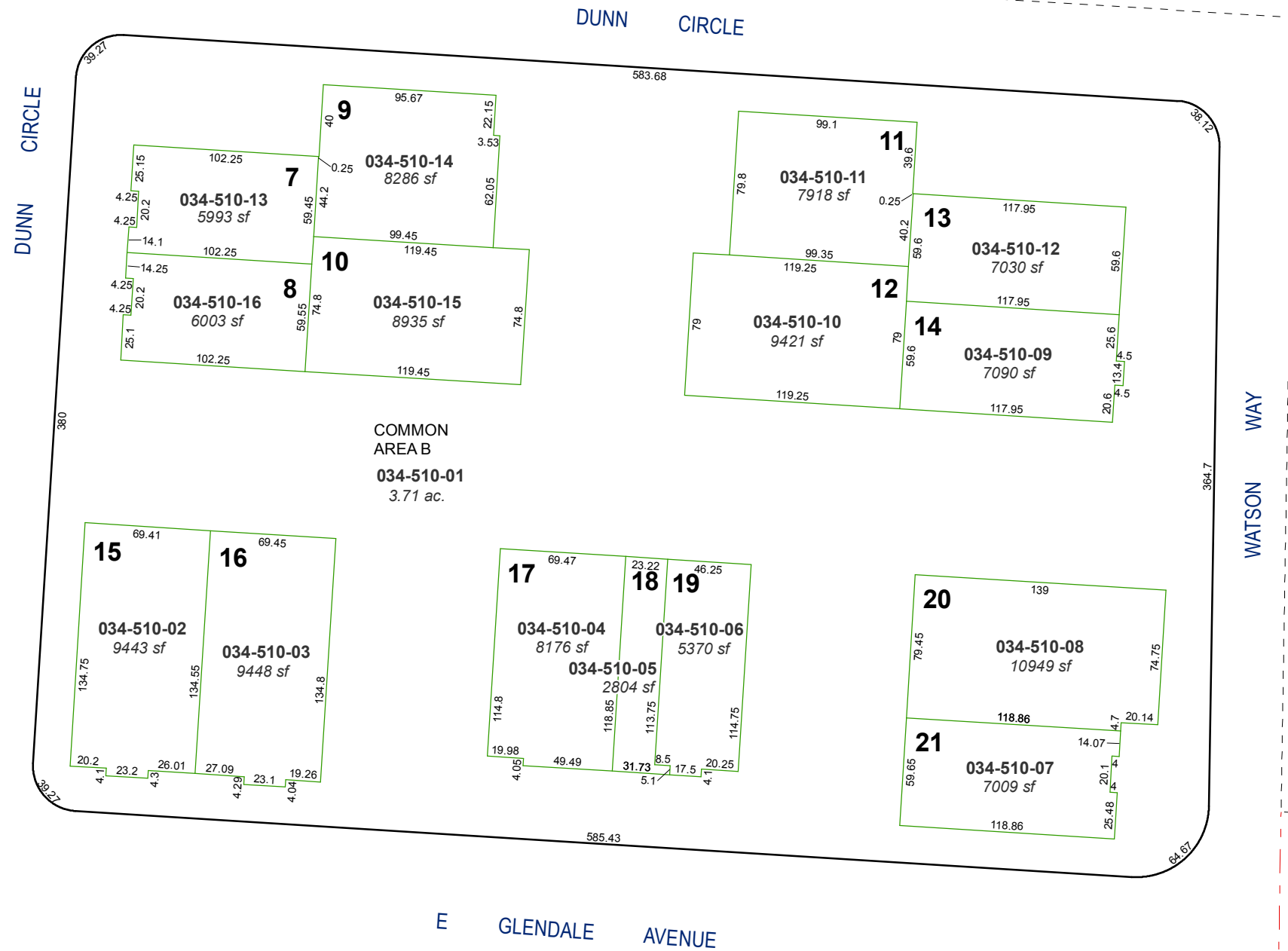


(#5014)
TURNER CROSSING BUSINESS PARK
 AN INDUSTRIAL/COMMERCIAL SUBDIVISION

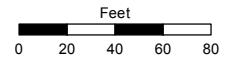
A POR. OF THE NE ¼ OF SEC. 9
 T19N - R20E



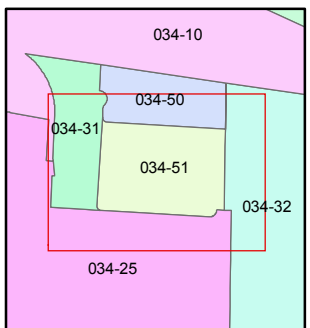
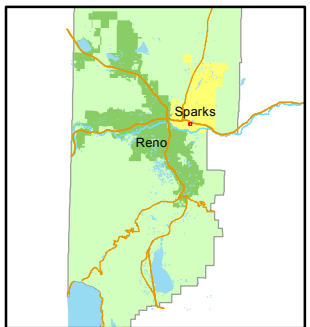
Assessor's Map Number
034-51

STATE OF NEVADA
WASHOE COUNTY
 ASSESSOR'S OFFICE
 Joshua G. Wilson, Assessor

1001 East Ninth Street
 Building D
 Reno, Nevada 89512
 (775) 328-2231



1 inch = 80 feet



created by: NLH 6/06/2012

last updated: _____

area previously shown on map(s)

034-31

NOTE: This map was prepared for the use of the Washoe County Assessor for assessment and illustrative purposes only. It does not represent a survey of the premises. No liability is assumed as to the sufficiency or accuracy of the data delineated herein.