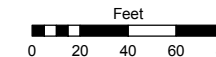


Assessor's Map Number

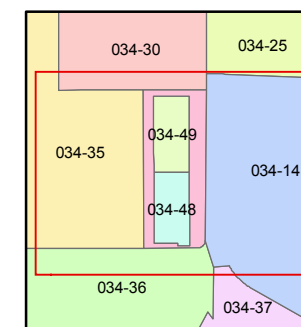
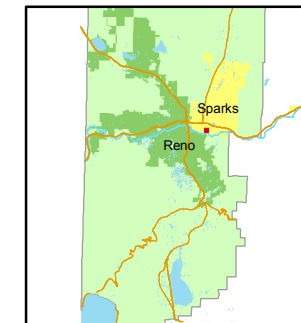
**034-47**

STATE OF NEVADA  
**WASHOE COUNTY**  
**ASSESSOR'S OFFICE**  
Joshua G. Wilson, Assessor

1001 East Ninth Street  
Building D  
Reno, Nevada 89512  
(775) 328-2231



1 inch = 80 feet



created by: KSB 7/06/10

last updated: \_\_\_\_\_

area previously shown on map(s)

034-35

NOTE: This map was prepared for the use of the Washoe County Assessor for assessment and illustrative purposes only. It does not represent a survey of the premises. No liability is assumed as to the sufficiency or accuracy of the data delineated hereon.

GPS "VISTA 2"  
N=14,869,575.43  
E= 2,310,747.21

N 75-51-42 E  
13,283.02'

(PRIVATE DRIVEWAY)

25' ACCESS EASEMENT

034-49

COMMON AREA

034-470-01  
80722 sf

034-48

WAY

STANFORD

**(#4944)**  
**10 GREG STREET**  
A COMMERCIAL INDUSTRIAL  
CONDOMINIUM SUBDIVISION  
PORTION OF SW ¼ SECTION 9  
T19N - R20E

EAST GREG ST.

GREG STREET

8 9  
17 16

S 76-33-52 W  
2,405.61'

