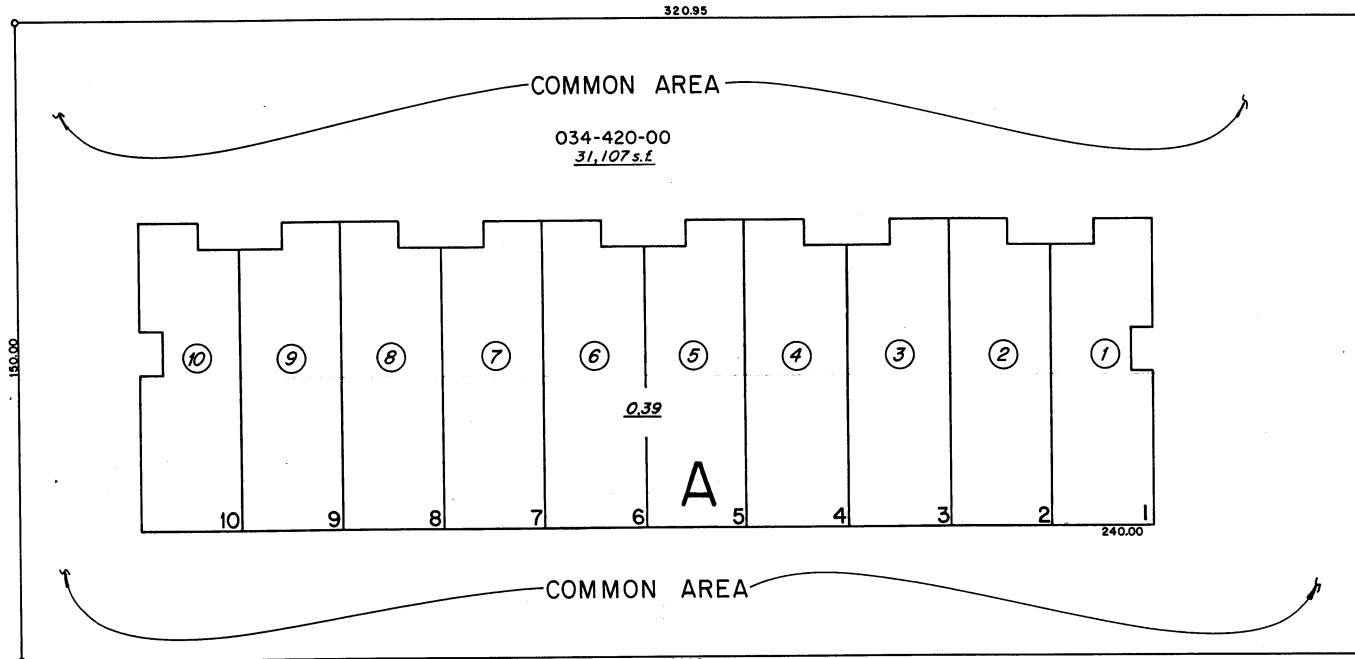


(#2004) G.S.A. INDUSTRIAL PARK  
 A CONDOMINIUM SUBDIVISION  
 S.W. 1/4 OF SEC. 8, T19N, R.20E.

GREG STREET

05



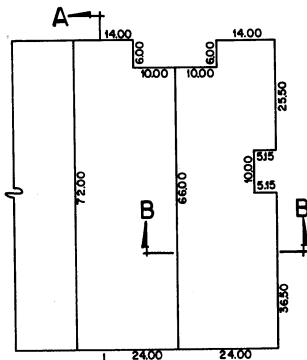
06

29

UNDIVIDED 1/10 INTEREST

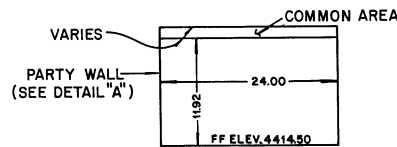
SCALE 1" = 30'

06

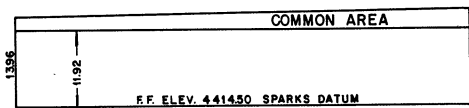


TYPICAL LOTS N.T.S.

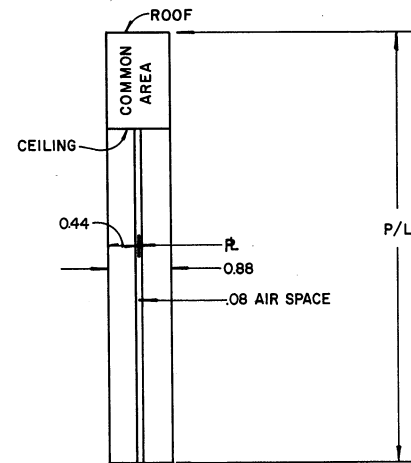
NOTE: This Map is prepared for the use of the Washoe County Assessor for Assessment and illustrative purposes only, it does not represent survey of the premises. No liability is assumed as to the sufficiency or accuracy of the data delineated hereon.



SECTION B-B



SECTION A-A N.T.S.



DETAIL "A" N.T.S.



Assessor's Map County of Washoe, Nevada  
 NOTE - ASSESSOR'S BLOCK NUMBERS SHOWN IN ELLIPSES  
 ASSESSOR'S PARCEL NUMBERS SHOWN IN CIRCLES

drawn by	DE. 7/30/81
revised	TWT 4/30/08
superseded	