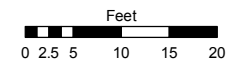
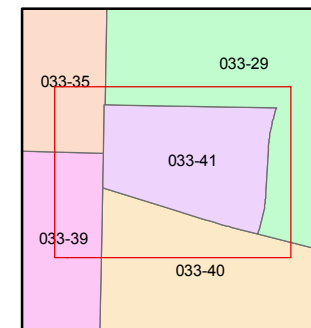
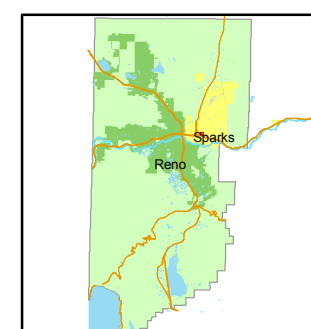


STATE OF NEVADA
WASHOE COUNTY
ASSESSOR'S OFFICE
Joshua G. Wilson, Assessor

1001 East Ninth Street
Building D
Reno, Nevada 89512
(775) 328-2231



1 inch = 20 feet

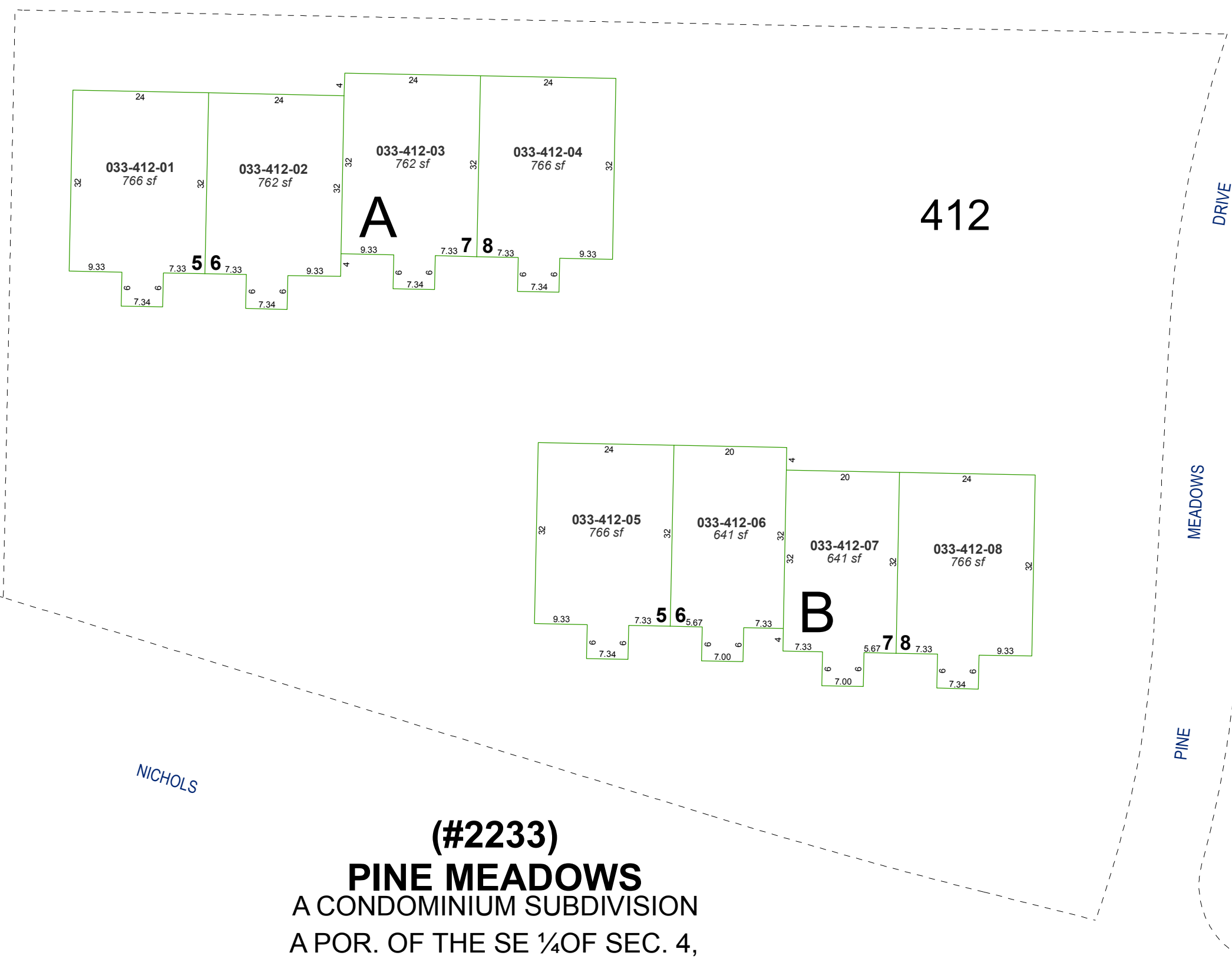


created by: NLH 6/15/2010

last updated: _____

area previously shown on map(s)

NOTE: This map was prepared for the use of the Washoe County Assessor for assessment and illustrative purposes only. It does not represent a survey of the premises. No liability is assumed as to the sufficiency or accuracy of the data delineated hereon.



412

(#2233)
PINE MEADOWS
A CONDOMINIUM SUBDIVISION
A POR. OF THE SE ¼ OF SEC. 4,
T19N - R20E

SECOND FLOOR
TO EACH AN UNDIVIDED 1/16th INTEREST IN COMMON AREA

NOTES:
- SEE PG. 033-41 FOR FIRST FLOOR UNITS
AND COMMON AREA PARCEL
- SEE PG. 033-41-S2 FOR UNIT DETAILS