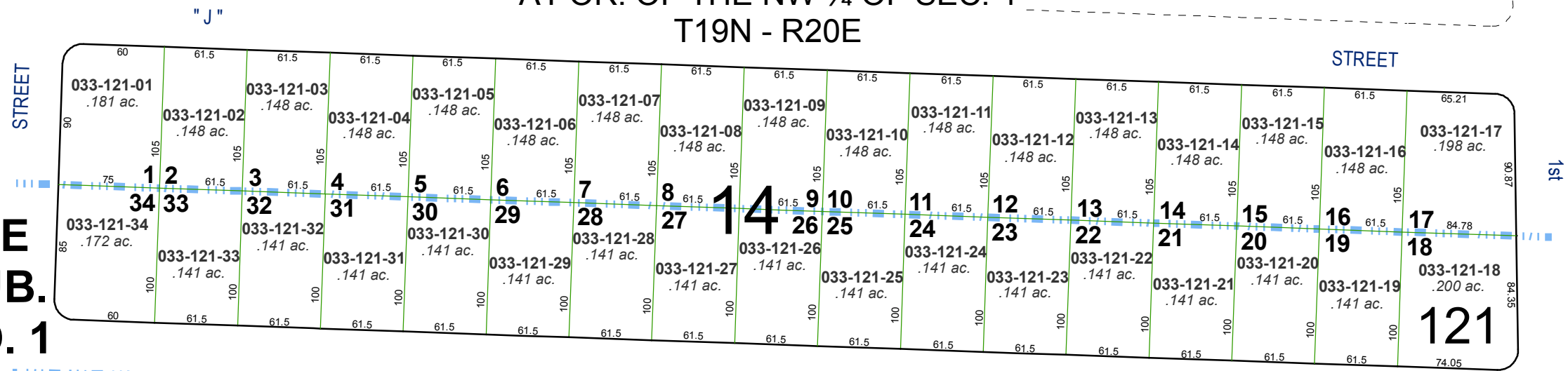


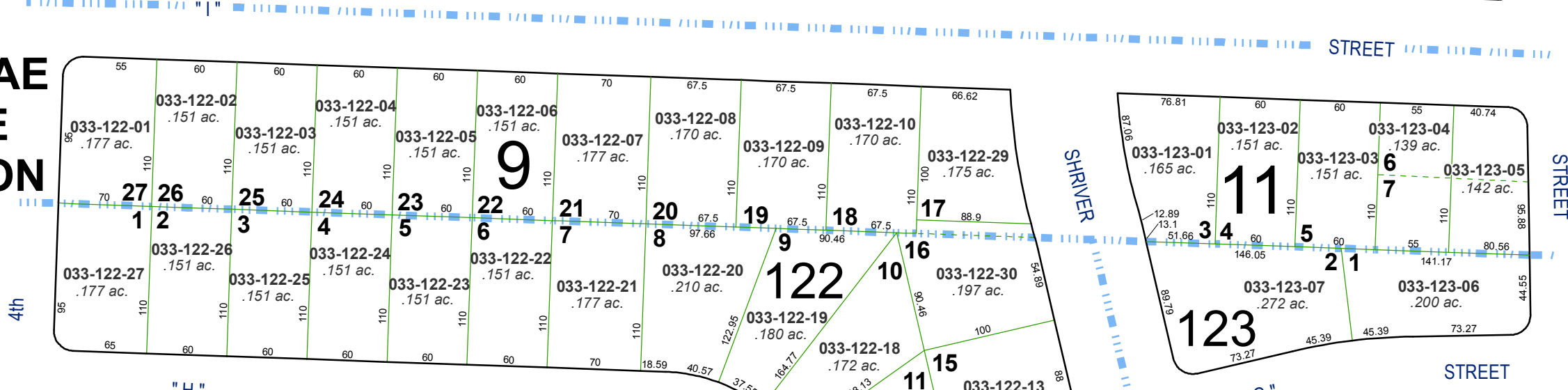
**(#471)
GREEN BRAE TERRACE SIB.
ADDITION NO. 3**

A POR. OF THE NW ¼ OF SEC. 4
T19N - R20E



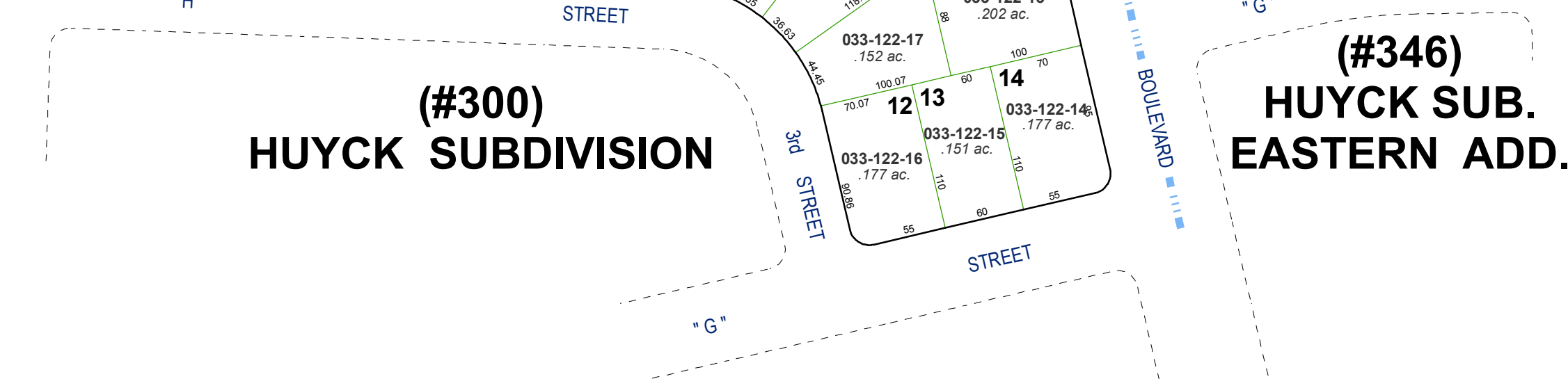
**(#459)
GREEN BRAE
TERRACE SUB.
ADDITION NO. 1**

**(#439)
GREEN BRAE
TERRACE
SUBDIVISION**



**(#300)
HUYCK SUBDIVISION**

**(#346)
HUYCK SUB.
EASTERN ADD.**

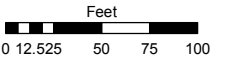


Assessor's Map Number

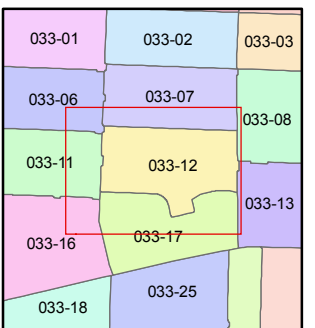
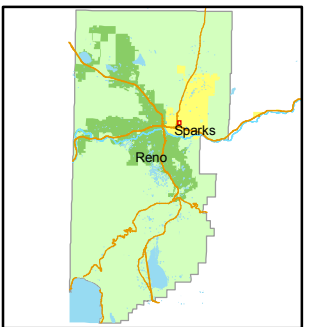
033-12

STATE OF NEVADA
WASHOE COUNTY
ASSESSOR'S OFFICE
Joshua G. Wilson, Assessor

1001 East Ninth Street
Building D
Reno, Nevada 89512
(775) 328-2231



1 inch = 100 feet



created by: NLH 11/12/2010

last updated: _____

area previously shown on map(s) _____

NOTE: This map was prepared for the use of the Washoe County Assessor for assessment and illustrative purposes only. It does not represent a survey of the premises. No liability is assumed as to the sufficiency or accuracy of the data delineated herein.