

32 33
5 4

(#482) GREENBRAE TERRACE SUBDIVISION ADDITION NO. 5

PORTION OF NW 1/4 SEC. 4, T19N -R20E

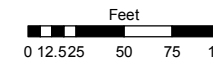
BOOK 28-36

Assessor's Map Number

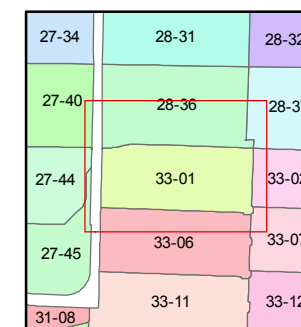
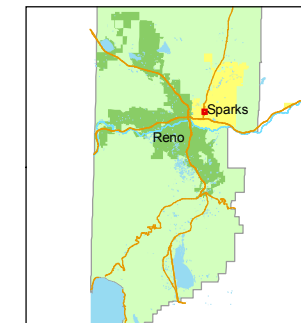
033-01

STATE OF NEVADA
WASHOE COUNTY
ASSESSOR'S OFFICE
Joshua G. Wilson, Assessor

1001 East Ninth Street
Building D
Reno, Nevada 89512
(775) 328-2231



1 inch = 100 feet



created by: CFB 9/21/2009

last updated:

area previously shown on map(s)

NOTE: This map was prepared for the use of the Washoe County Assessor for assessment and illustrative purposes only. It does not represent a survey of the premises. No liability is assumed as to the sufficiency or accuracy of the data delineated hereon.

N 0° 36' 03" E
646.08

WAY

PYRAMID

GREENBRAE

DRIVE

STREET

STREET

STREET

FIFTH

STREET

FOURTH

(#473) GREENBRAE TERRACE SUBDIVISION ADDITION NO. 4

