

# REVERSION TO ACREAGE TRACT MAP #3540 REVERSION TO ACREAGE TRACT MAP #3294

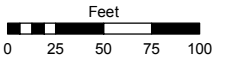
POR. SE ¼ OF SECTION 5, T19N - R20E

Assessor's Map Number

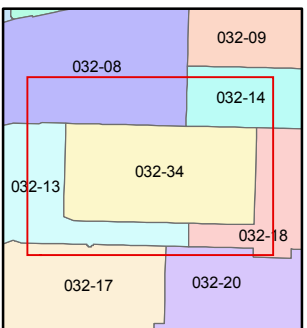
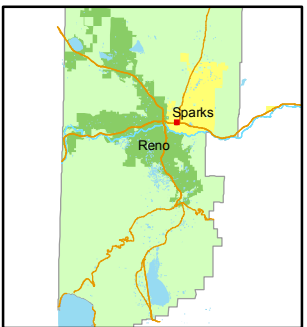
**032-34**

STATE OF NEVADA  
**WASHOE COUNTY**  
ASSESSOR'S OFFICE  
Joshua G. Wilson, Assessor

1001 East Ninth Street  
Building D  
Reno, Nevada 89512  
(775) 328-2231



1 inch = 100 feet



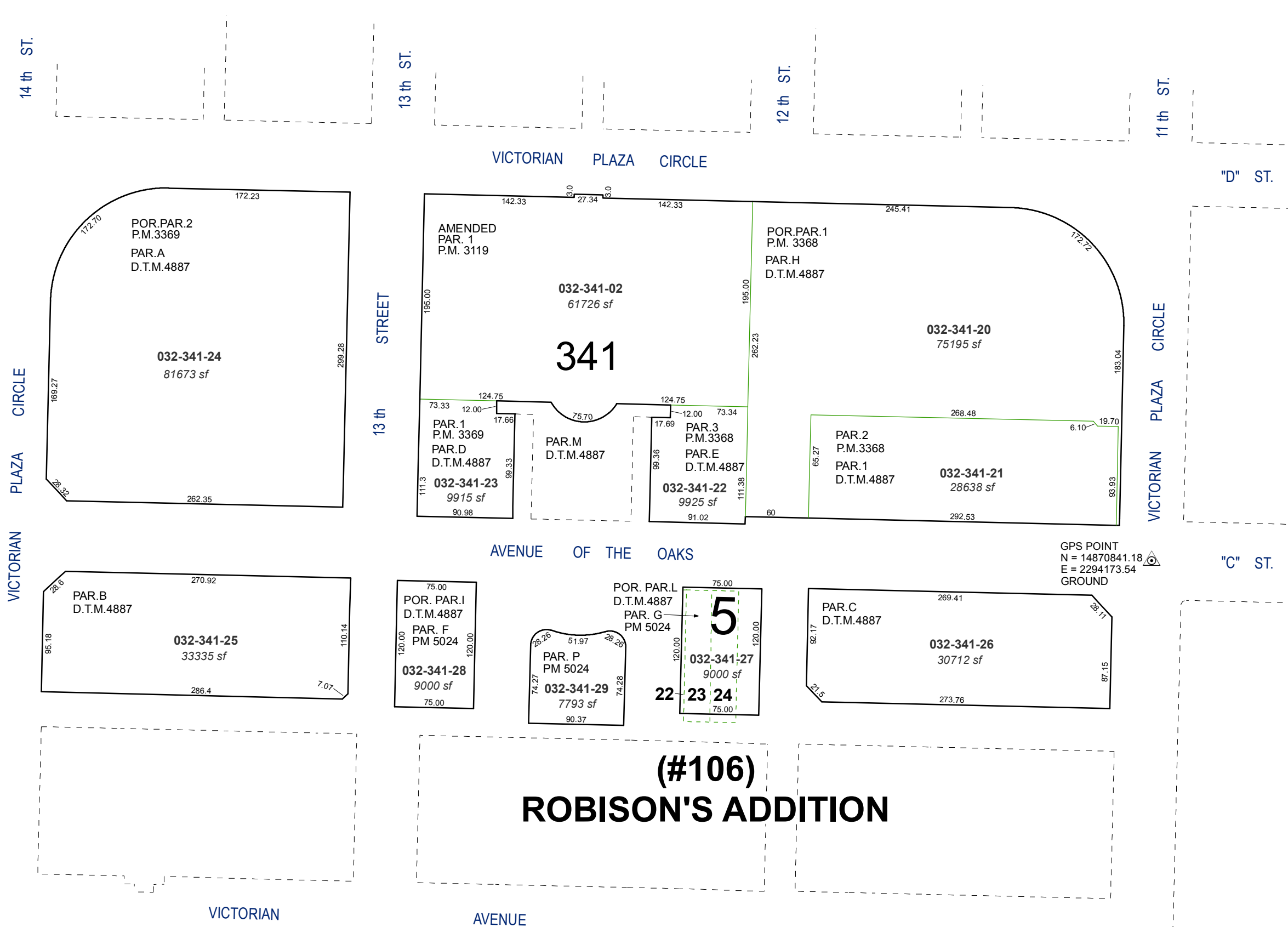
created by: KSB 3/22/10

last updated: \_\_\_\_\_

area previously shown on map(s)

032-13, 032-18

NOTE: This map was prepared for the use of the Washoe County Assessor for assessment and illustrative purposes only. It does not represent a survey of the premises. No liability is assumed as to the sufficiency or accuracy of the data delineated herein.



032-341-24  
81673 sf

POR.PAR.2  
P.M.3369  
PAR.A  
D.T.M.4887

032-341-02  
61726 sf

AMENDED  
PAR. 1  
P.M. 3119

032-341-20  
75195 sf

POR.PAR.1  
P.M. 3368  
PAR.H  
D.T.M.4887

032-341-21  
28638 sf

PAR. 2  
P.M.3368  
PAR.1  
D.T.M.4887

032-341-22  
9925 sf

PAR.3  
P.M.3368  
PAR.E  
D.T.M.4887

032-341-23  
9915 sf

PAR.1  
P.M. 3369  
PAR.D  
D.T.M.4887

PAR.M  
D.T.M.4887

032-341-25  
33335 sf

PAR.B  
D.T.M.4887

032-341-28  
9000 sf

PAR. F  
PM 5024

032-341-27  
9000 sf

PAR. PAR.L  
D.T.M.4887  
PAR. G  
PM 5024

032-341-29  
7793 sf

PAR. P  
PM 5024

032-341-26  
30712 sf

PAR.C  
D.T.M.4887