

Assessor's Map Number

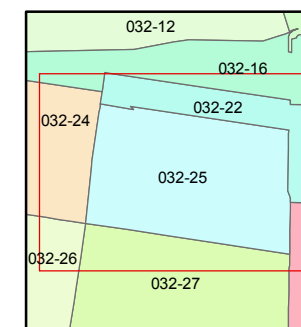
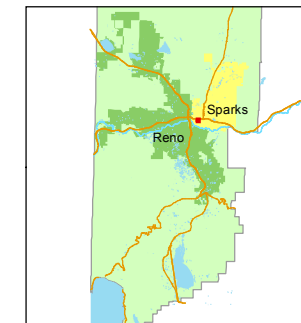
**032-25**

STATE OF NEVADA  
**WASHOE COUNTY**  
ASSESSOR'S OFFICE  
Joshua G. Wilson, Assessor

1001 East Ninth Street  
Building D  
Reno, Nevada 89512  
(775) 328-2231



1 inch = 100 feet



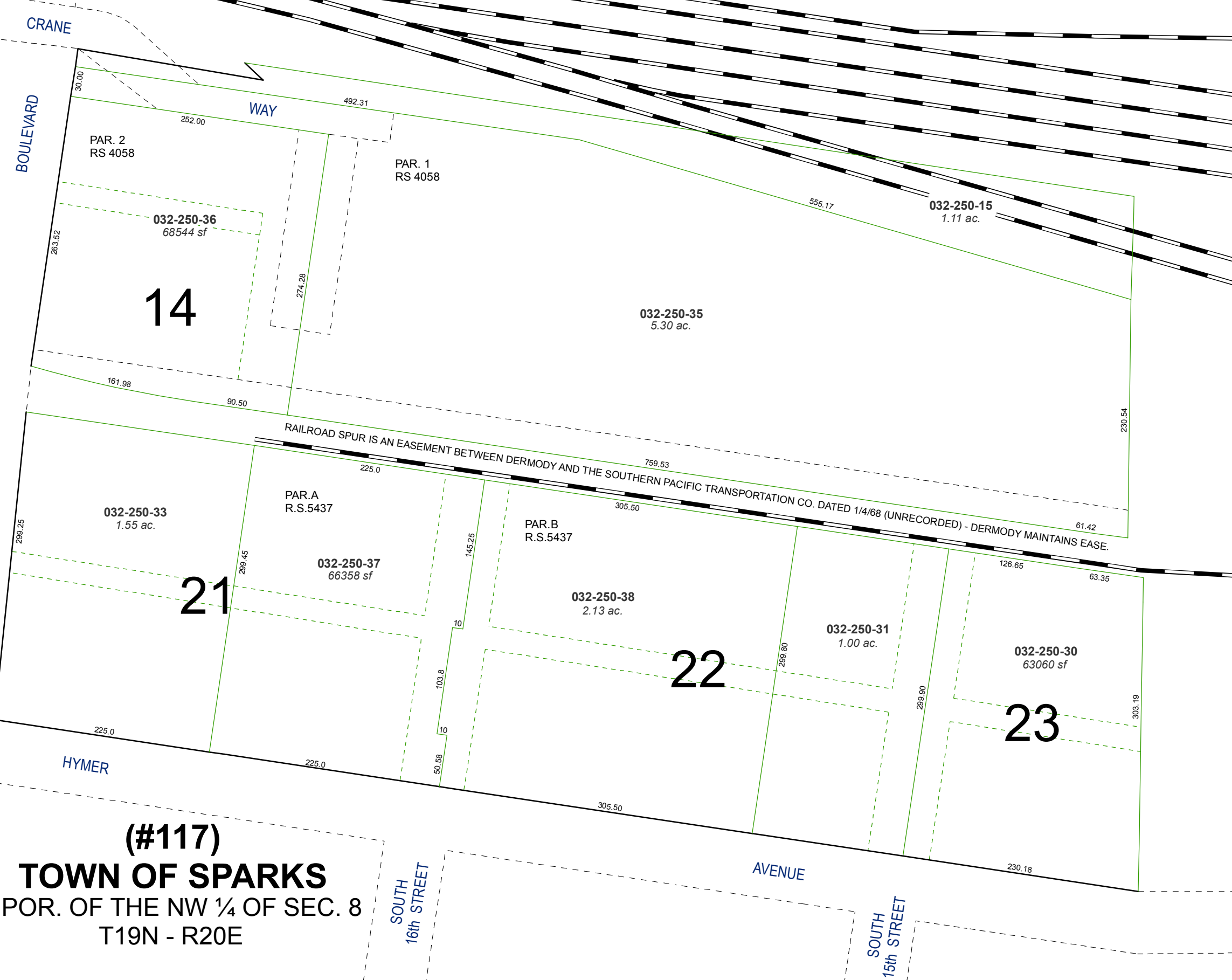
created by: NLH 10/18/2010

last updated: CFB 06/28/2012

area previously shown on map(s)

NOTE: This map was prepared for the use of the Washoe County Assessor for assessment and illustrative purposes only. It does not represent a survey of the premises. No liability is assumed as to the sufficiency or accuracy of the data delineated hereon.

Southern Pacific Transportation R/W  
and Freight Marshalling Yard



14

21

22

23

**(#117)**  
**TOWN OF SPARKS**  
A POR. OF THE NW ¼ OF SEC. 8  
T19N - R20E

PAR. 2  
RS 4058

PAR. 1  
RS 4058

032-250-36  
68544 sf

032-250-35  
5.30 ac.

032-250-15  
1.11 ac.

032-250-33  
1.55 ac.

PAR.A  
R.S.5437

PAR.B  
R.S.5437

032-250-37  
66358 sf

032-250-38  
2.13 ac.

032-250-31  
1.00 ac.

032-250-30  
63060 sf