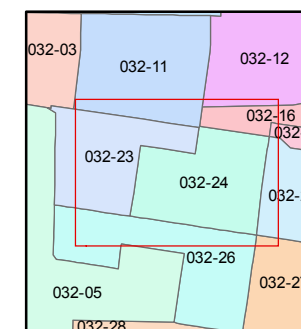
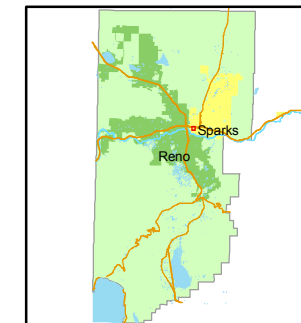


1 inch = 100 feet

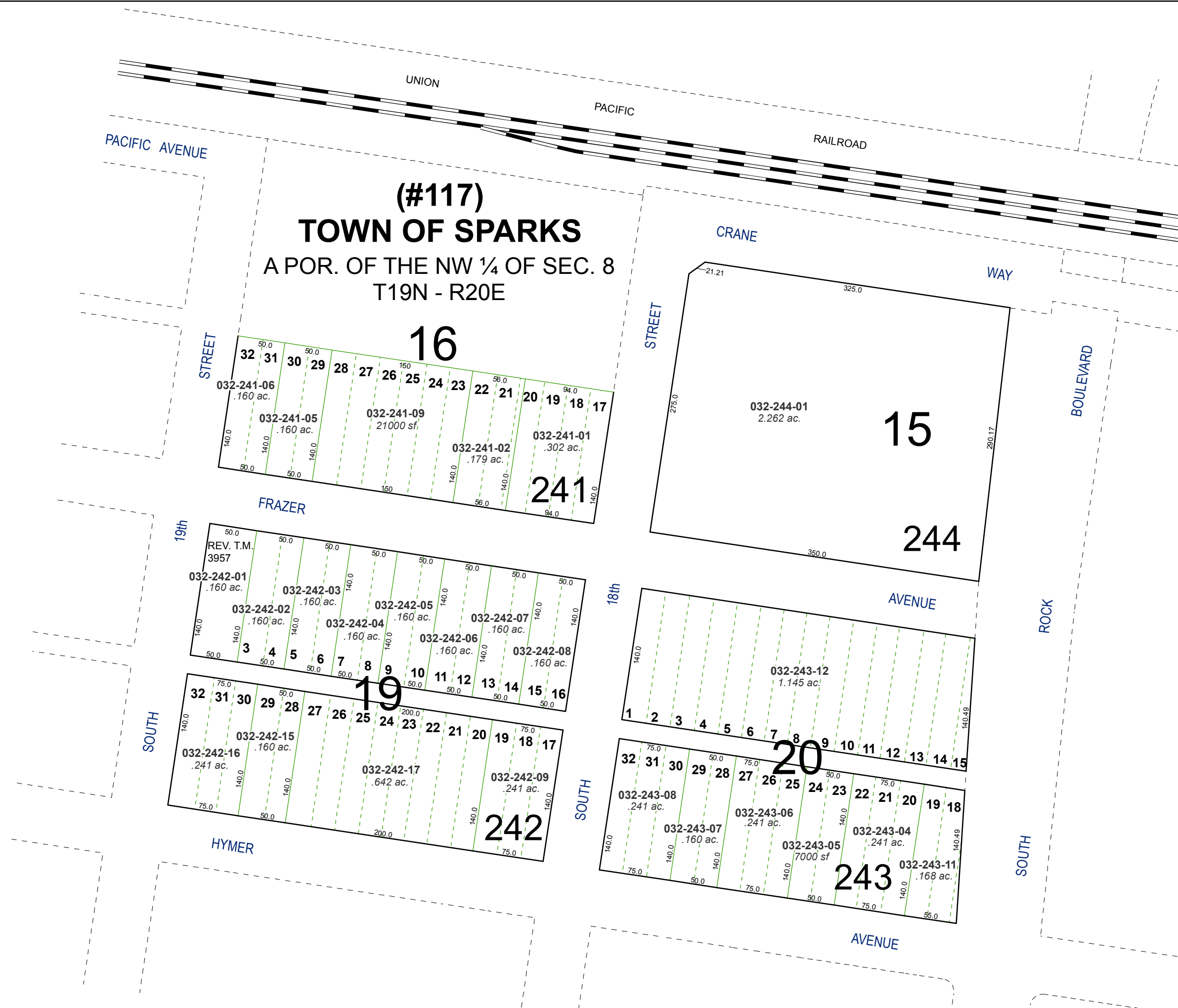


created by: NLH 8/11/2010

last updated: _____

area previously shown on map(s)

NOTE: This map was prepared for the use of the Washoe County Assessor for assessment and illustrative purposes only. It does not represent a survey of the premises. No liability is assumed as to the sufficiency or accuracy of the data delineated hereon.



(#117)
TOWN OF SPARKS
A POR. OF THE NW ¼ OF SEC. 8
T19N - R20E

16

15

244

19

20

242

243

241