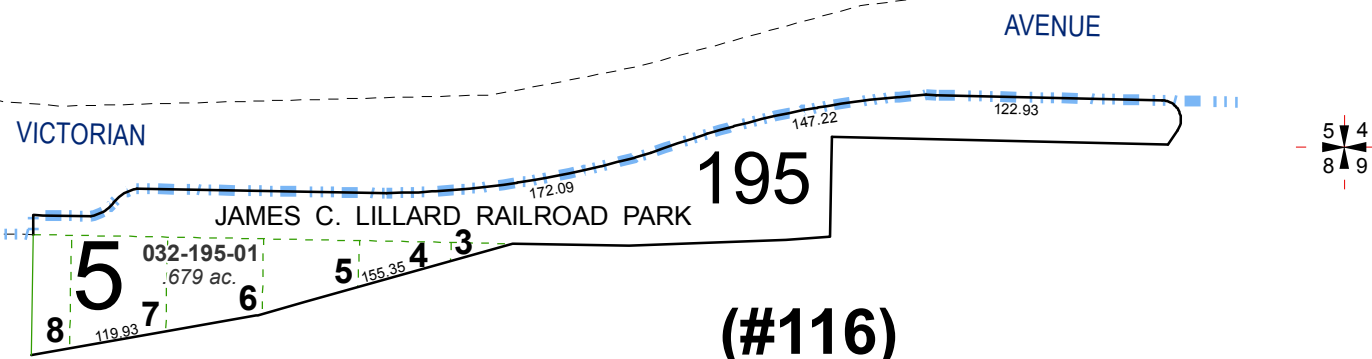
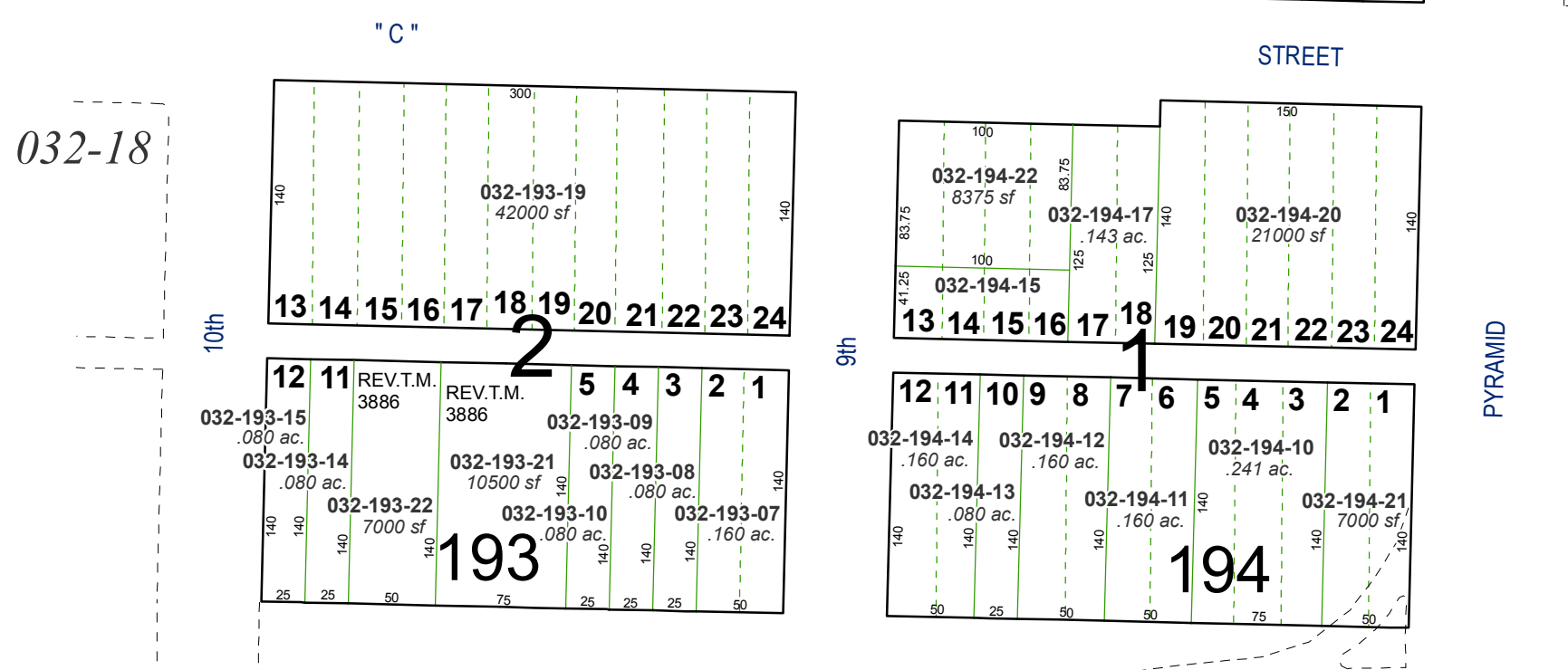
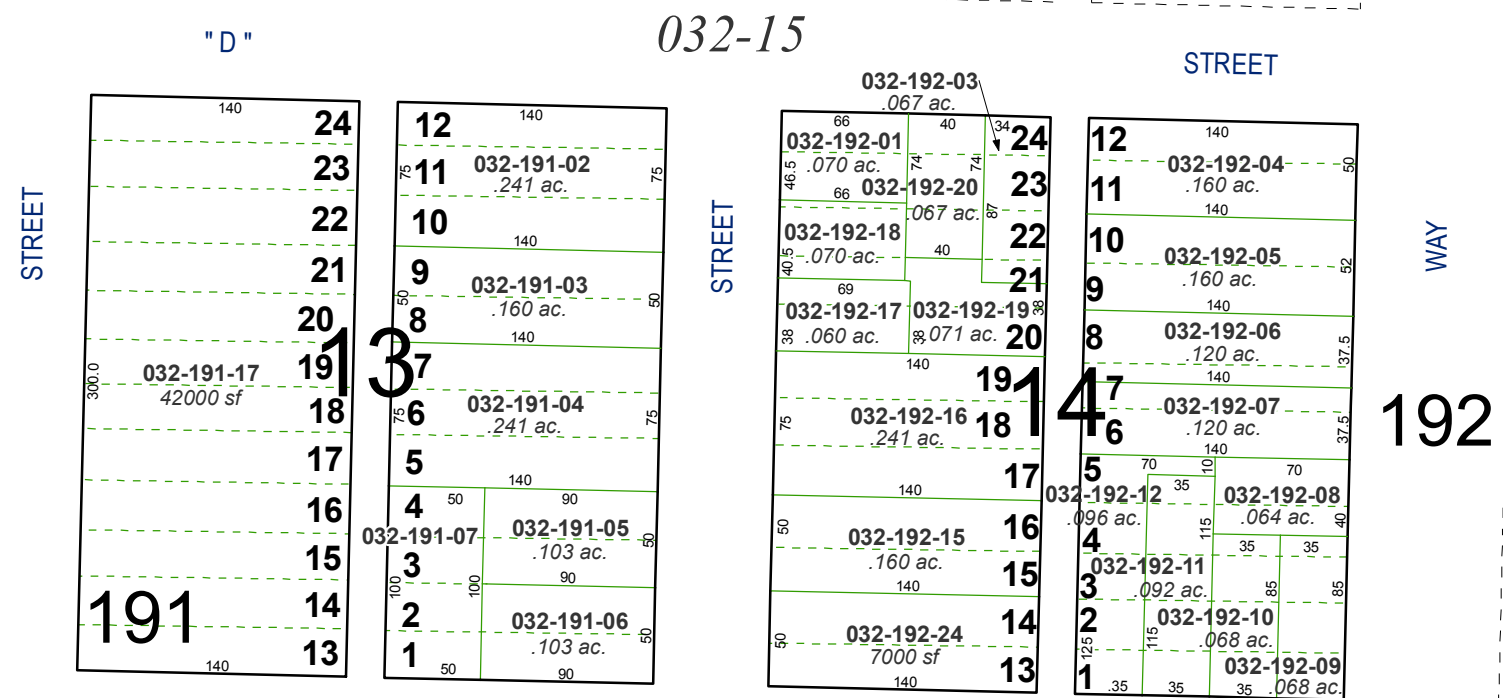


**(#106)**  
**ROBISON'S ADDITION**  
 A POR. OF THE SE ¼ OF SEC. 5,  
 T19N - R20E



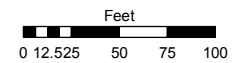
**(#116)**  
**TOWNSITE OF SPARKS**

Assessor's Map Number

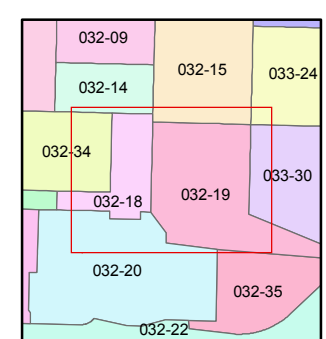
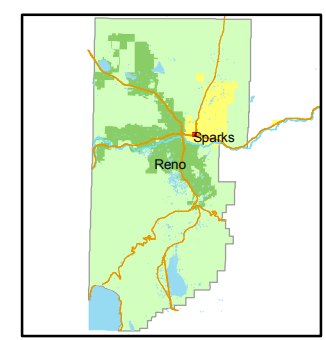
**032-19**

STATE OF NEVADA  
**WASHOE COUNTY**  
**ASSESSOR'S OFFICE**  
 Joshua G. Wilson, Assessor

1001 East Ninth Street  
 Building D  
 Reno, Nevada 89512  
 (775) 328-2231



1 inch = 100 feet



created by: NLH 5/19/2010

last updated: \_\_\_\_\_

area previously shown on map(s) \_\_\_\_\_

NOTE: This map was prepared for the use of the Washoe County Assessor for assessment and illustrative purposes only. It does not represent a survey of the premises. No liability is assumed as to the sufficiency or accuracy of the data delineated hereon.