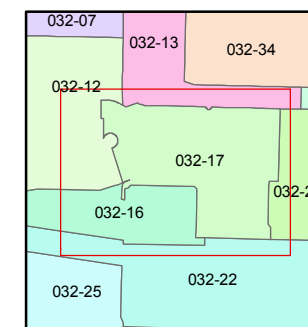
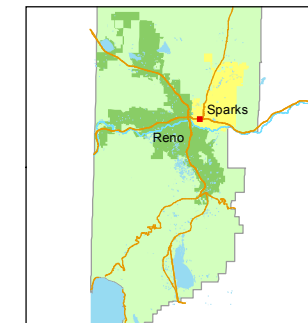


1 inch = 100 feet



created by: NLH 05/17/2010

last updated: CFB 07/09/2012

area previously shown on map(s)

NOTE: This map was prepared for the use of the Washoe County Assessor for assessment and illustrative purposes only. It does not represent a survey of the premises. No liability is assumed as to the sufficiency or accuracy of the data delineated hereon.

**(#116)**  
**TOWNSITE OF SPARKS**  
PORTIONS OF THE S 1/2 OF SEC. 5  
AND OF THE N 1/2 OF SEC. 8  
T19N - R20E

