

(#106)  
**ROBISON'S ADDITION**  
A POR. OF THE SE 1/4 OF SEC. 5,  
T19N - R20E

Assessor's Map Number

**032-13**

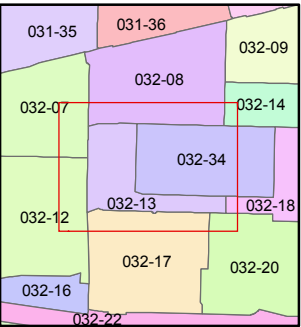
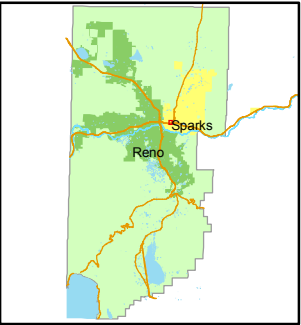
STATE OF NEVADA  
**WASHOE COUNTY**  
**ASSESSOR'S OFFICE**  
Joshua G. Wilson, Assessor

1001 East Ninth Street  
Building D  
Reno, Nevada 89512  
(775) 328-2231



Feet  
0 12.525 50 75 100

1 inch = 100 feet

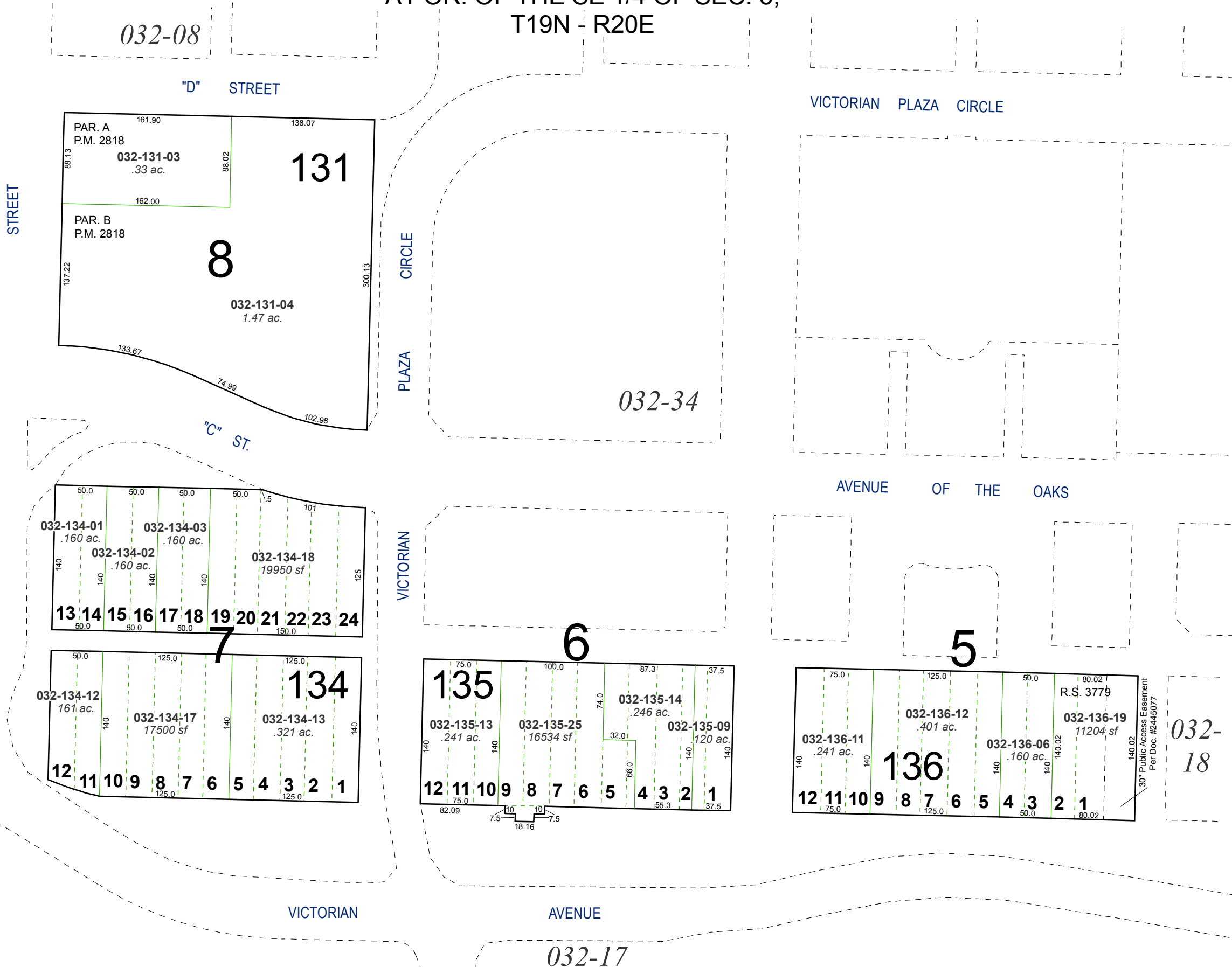


created by: NLH 5/12/2010

last updated: \_\_\_\_\_

area previously shown on map(s)  
\_\_\_\_\_

NOTE: This map was prepared for the use of the Washoe County Assessor for assessment and illustrative purposes only. It does not represent a survey of the premises. No liability is assumed as to the sufficiency or accuracy of the data delineated hereon.



032-07

032-08

"D" STREET

131

8

032-131-04  
1.47 ac.

CIRCLE

PLAZA

032-34

VICTORIAN PLAZA CIRCLE

AVENUE OF THE OAKS

032-12

15th

032-134-01

032-134-03

032-134-02

032-134-18

13 14 15 16 17 18 19 20 21 22 23 24

7

032-134-12

032-134-17

032-134-13

12 11 10 9 8 7 6 5 4 3 2 1

VICTORIAN

6

135  
032-135-13 .241 ac.  
032-135-25 16534 sf  
032-135-14 .246 ac.  
032-135-09 .120 ac.

AVENUE

032-17

5

136  
032-136-11 .241 ac.  
032-136-12 .401 ac.  
032-136-06 .160 ac.  
032-136-19 11204 sf

032-18