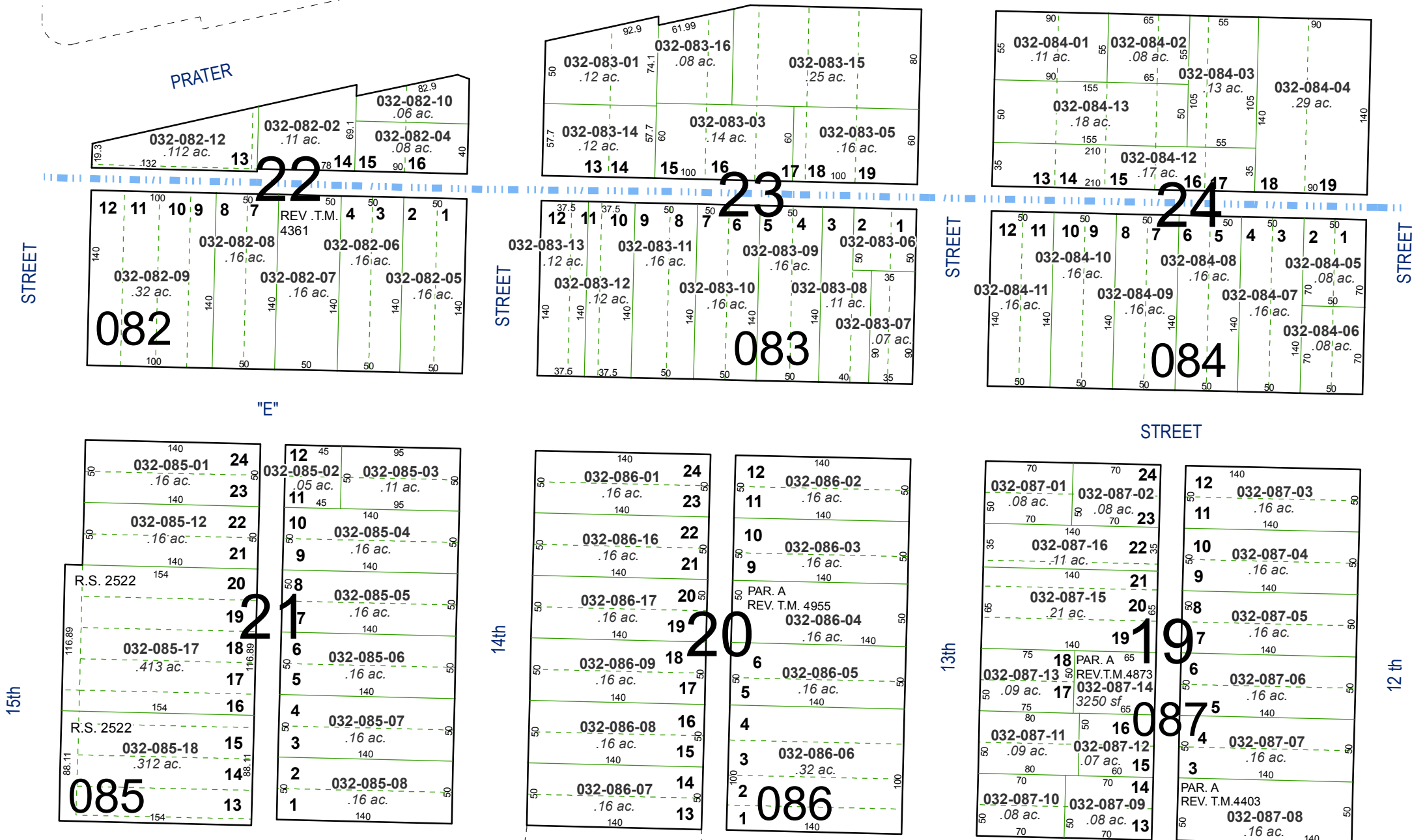
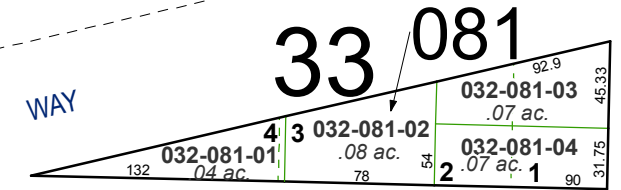


# (#213) PRATER ADDITION TO SPARKS

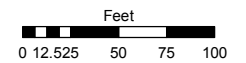
A POR. OF THE SE ¼ OF SEC. 5  
T19N - R20E



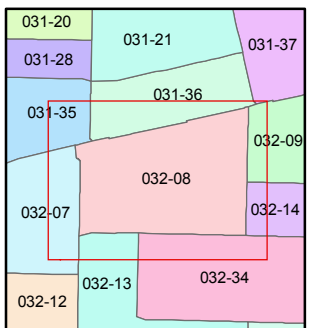
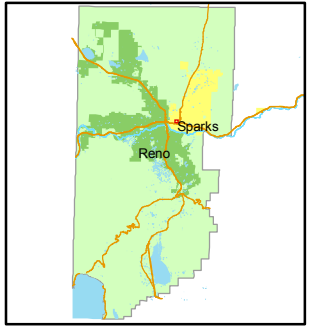
Assessor's Map Number  
**032-08**

STATE OF NEVADA  
**WASHOE COUNTY**  
ASSESSOR'S OFFICE  
Joshua G. Wilson, Assessor

1001 East Ninth Street  
Building D  
Reno, Nevada 89512  
(775) 328-2231



1 inch = 100 feet



created by: NLH 5/10/2010

last updated: NLH 2/09/2011

area previously shown on map(s)

NOTE: This map was prepared for the use of the Washoe County Assessor for assessment and illustrative purposes only. It does not represent a survey of the premises. No liability is assumed as to the sufficiency or accuracy of the data delineated herein.

# (#106) ROBISON'S ADDITION