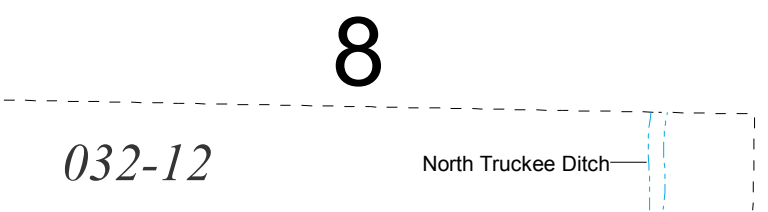
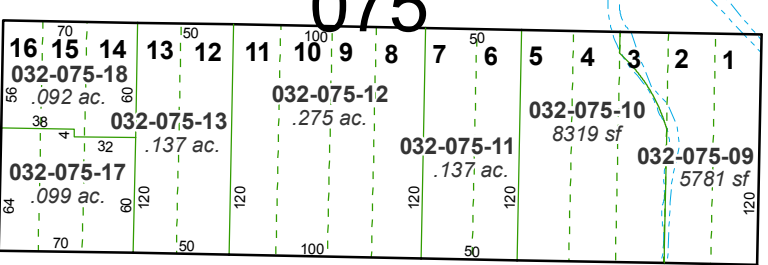
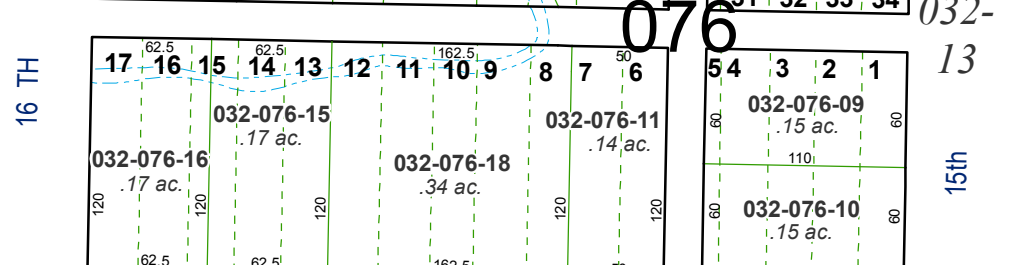
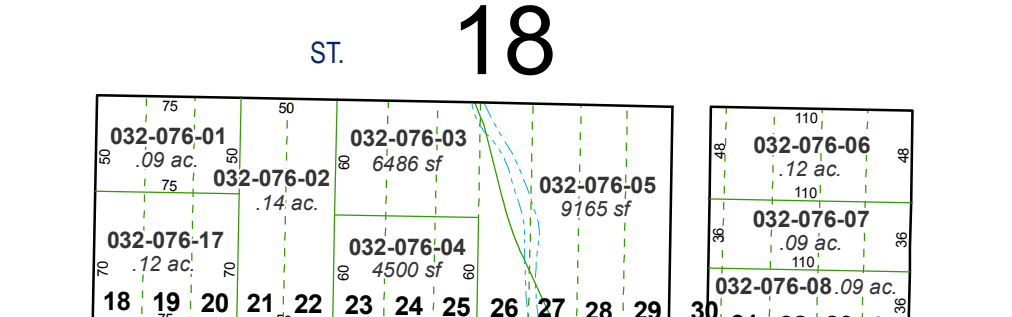
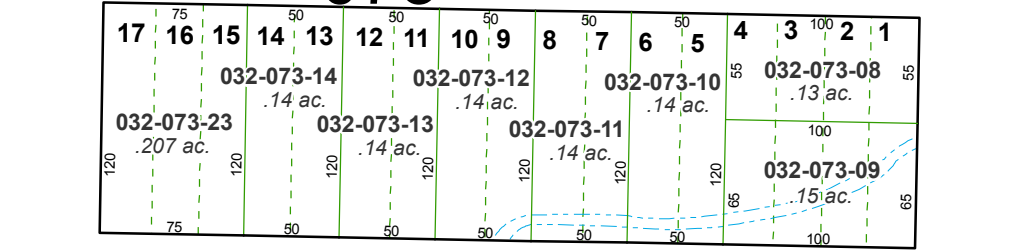
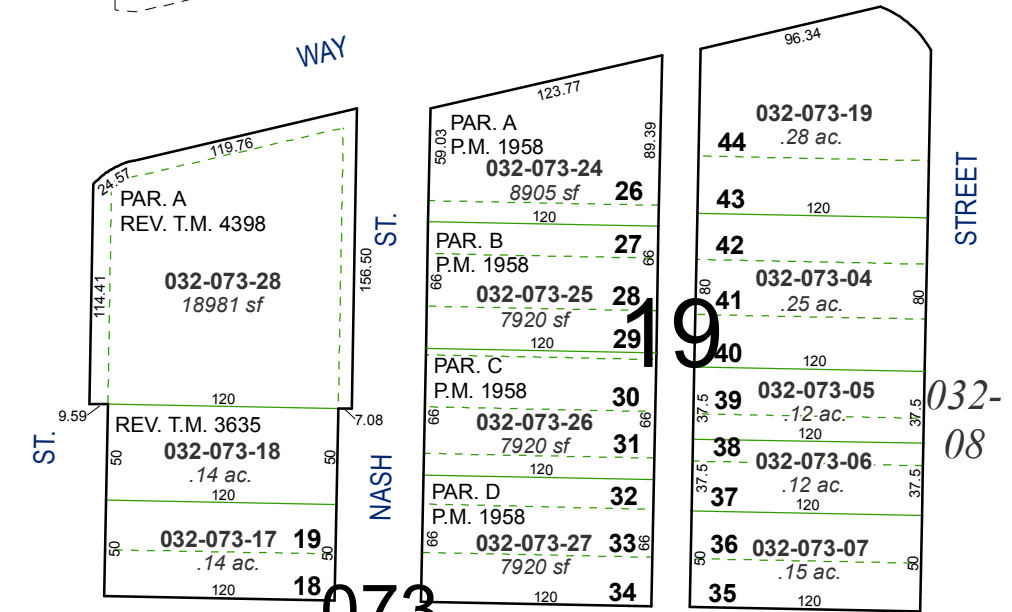
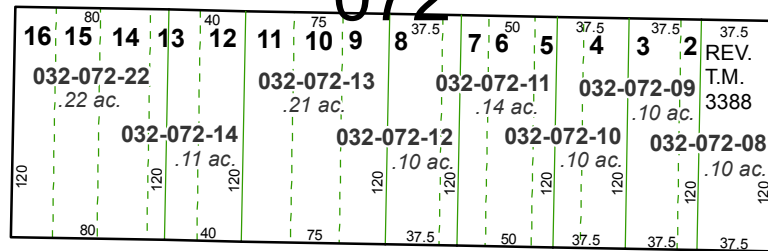
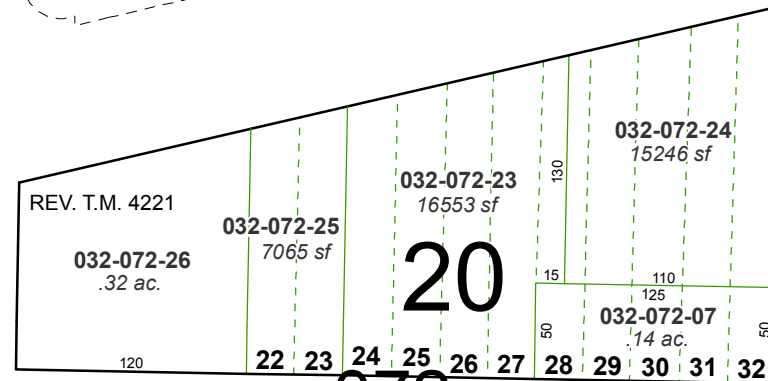
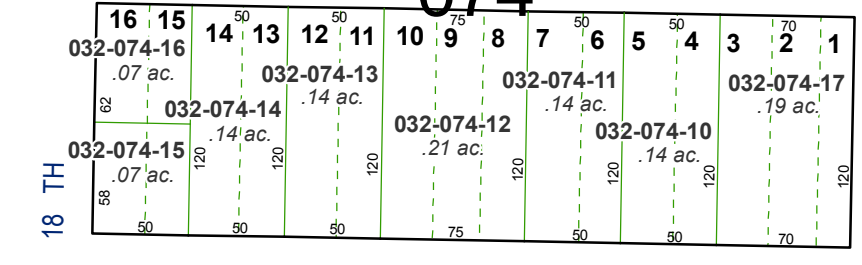
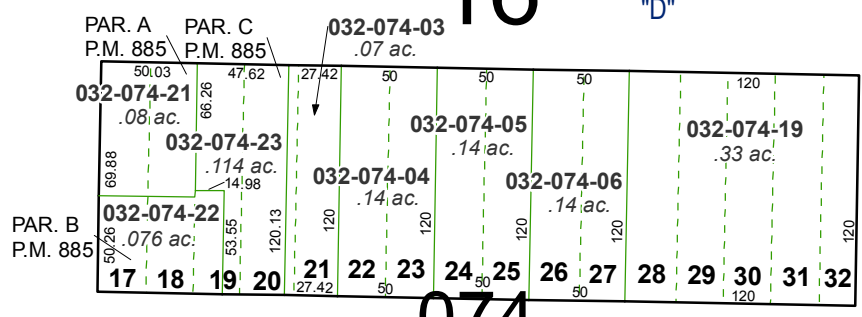
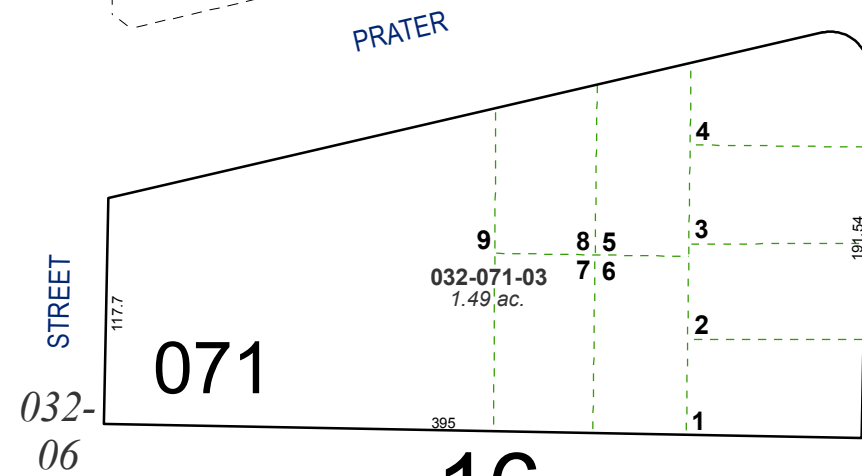


(#79)
NEWTOWN TRACT
 A POR. OF THE SW 1/4 OF SEC. 5,
 T19N - R20E

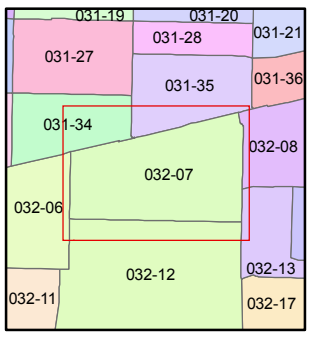
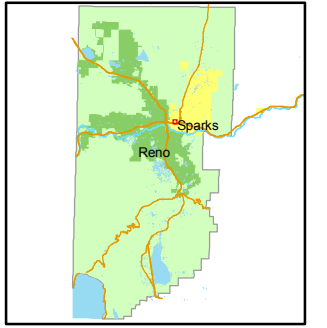
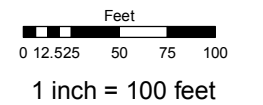
BOOK 031



Assessor's Map Number
032-07

STATE OF NEVADA
WASHOE COUNTY
 ASSESSOR'S OFFICE
 Joshua G. Wilson, Assessor

1001 East Ninth Street
 Building D
 Reno, Nevada 89512
 (775) 328-2231



created by: NLH 5/07/2010

last updated: _____

area previously shown on map(s) _____

NOTE: This map was prepared for the use of the Washoe County Assessor for assessment and illustrative purposes only. It does not represent a survey of the premises. No liability is assumed as to the sufficiency or accuracy of the data delineated hereon.