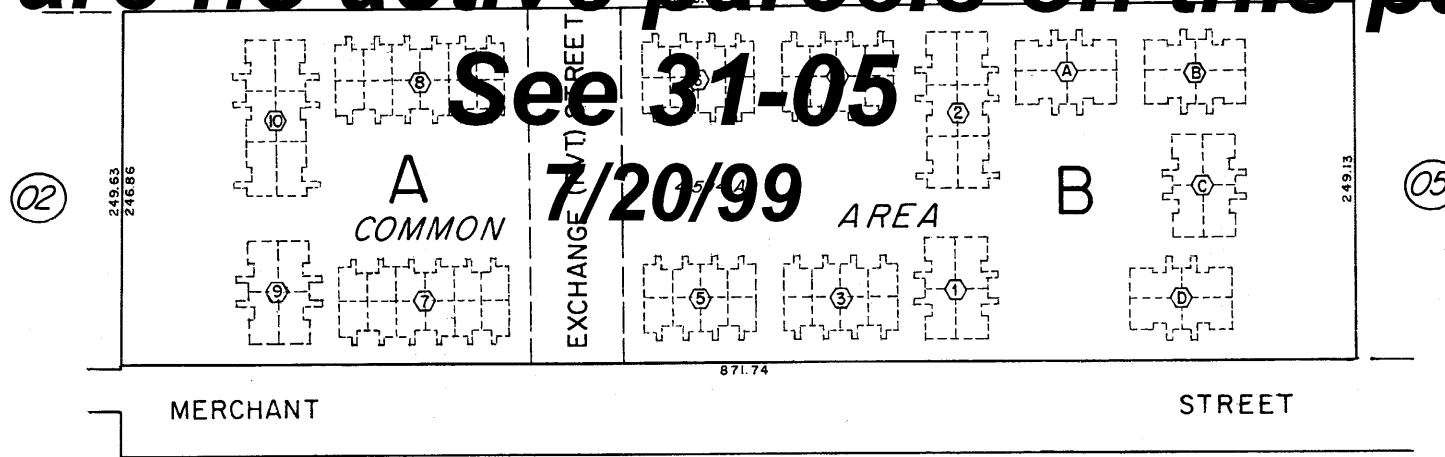


OPEN CIRCLES WEST
A CONDOMINIUM
POR. NW4 SEC. 5, T.19 N.- R.20 E.
UNDIVIDED 1/184 INTEREST

ODDIE

BOULEVARD

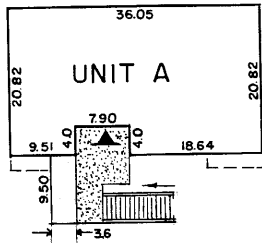
There are no active parcels on this page.



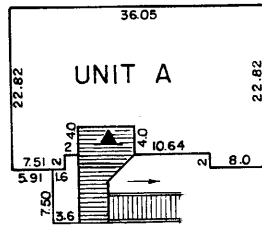
05

◻ BUILDING NUMBER

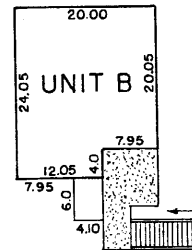
LOWER FLOOR



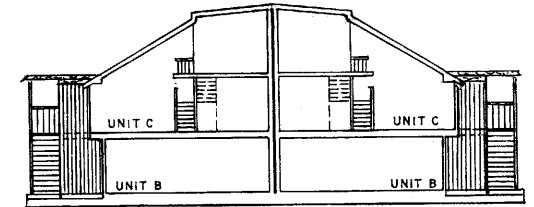
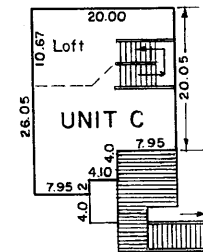
UPPER FLOOR



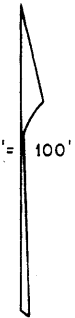
LOWER FLOOR



UPPER FLOOR



CROSS SECTION, 4 UNITS BACK TO BACK



TYPICAL UNITS

SCALE: 1" = 20'

NOTE: This Map is prepared for the use of the Washoe County Assessor for Assessment and illustrative purposes only, it does not represent survey of the premises. No liability is assumed as to the sufficiency or accuracy of the data delineated hereon.

Assessor's Map County of Washoe, Nevada

NOTE - ASSESSOR'S BLOCK NUMBERS SHOWN IN ELLIPSES
ASSESSOR'S PARCEL NUMBERS SHOWN IN CIRCLES

drawn by	M. Porter	9/82
revised		
superseded		