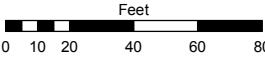
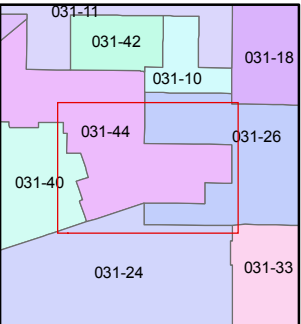
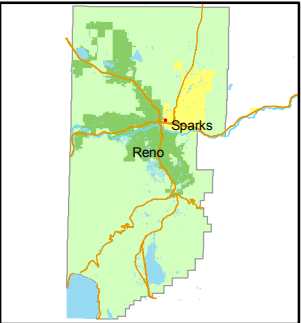


STATE OF NEVADA
WASHOE COUNTY
ASSESSOR'S OFFICE
Joshua G. Wilson, Assessor

1001 East Ninth Street
Building D
Reno, Nevada 89512
(775) 328-2231



1 inch = 60 feet



created by: NLH 5/03/2010

last updated: _____

area previously shown on map(s) _____

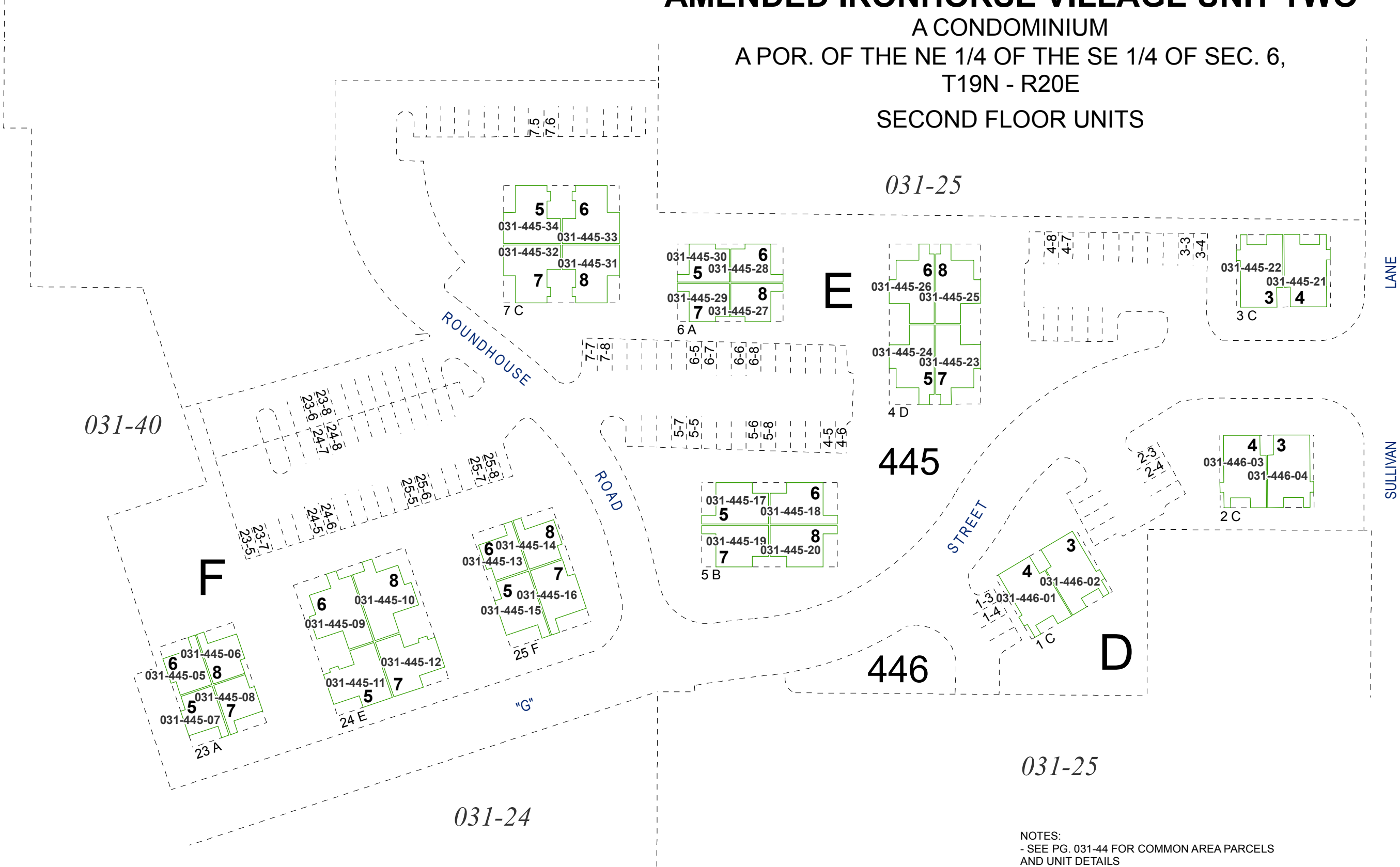
NOTE: This map was prepared for the use of the Washoe County Assessor for assessment and illustrative purposes only. It does not represent a survey of the premises. No liability is assumed as to the sufficiency or accuracy of the data delineated hereon.

(#1914)
AMENDED IRONHORSE VILLAGE UNIT TWO

A CONDOMINIUM

A POR. OF THE NE 1/4 OF THE SE 1/4 OF SEC. 6,
T19N - R20E

SECOND FLOOR UNITS



- NOTES:
- SEE PG. 031-44 FOR COMMON AREA PARCELS AND UNIT DETAILS
 - SEE PG. 031-44-S3 FOR FIRST FLOOR UNITS
 - TO EACH AN UNDIVIDED 1/68 INTEREST IN COMMON AREA