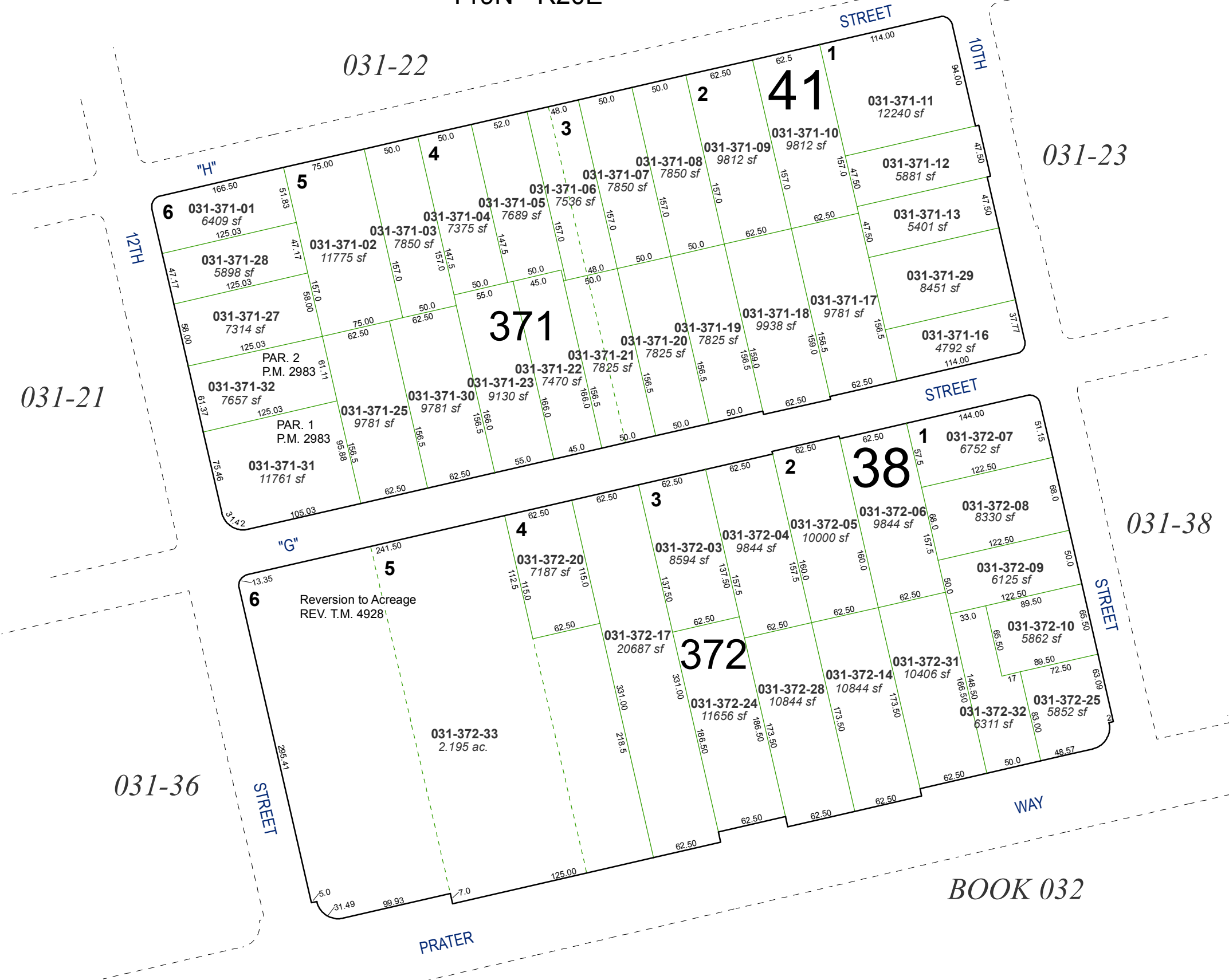


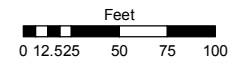
**(#213)**  
**PRATER ADDITION TO SPARKS**  
 A POR. OF THE SE 1/4 OF SEC. 5,  
 T19N - R20E



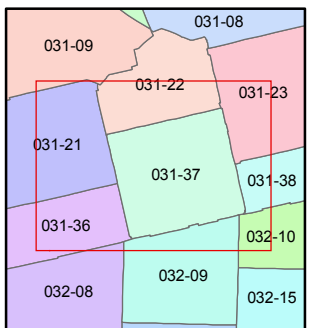
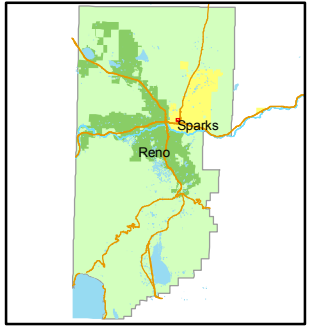
Assessor's Map Number  
**031-37**

STATE OF NEVADA  
**WASHOE COUNTY**  
 ASSESSOR'S OFFICE  
 Joshua G. Wilson, Assessor

1001 East Ninth Street  
 Building D  
 Reno, Nevada 89512  
 (775) 328-2231



1 inch = 100 feet



created by: NLH 2/19/2010

last updated: \_\_\_\_\_

area previously shown on map(s)  
 \_\_\_\_\_

NOTE: This map was prepared for the use of the Washoe County Assessor for assessment and illustrative purposes only. It does not represent a survey of the premises. No liability is assumed as to the sufficiency or accuracy of the data delineated herein.

**BOOK 032**