

**(#80)
NEWTOWN TRACT**

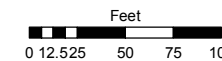
A POR. OF THE SW 1/4 OF SEC. 5,
T19N - R20E

Assessor's Map Number

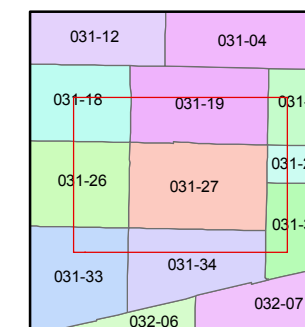
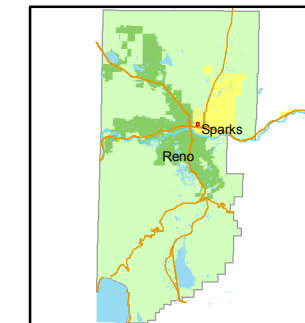
031-27

STATE OF NEVADA
WASHOE COUNTY
ASSESSOR'S OFFICE
Joshua G. Wilson, Assessor

1001 East Ninth Street
Building D
Reno, Nevada 89512
(775) 328-2231



1 inch = 100 feet

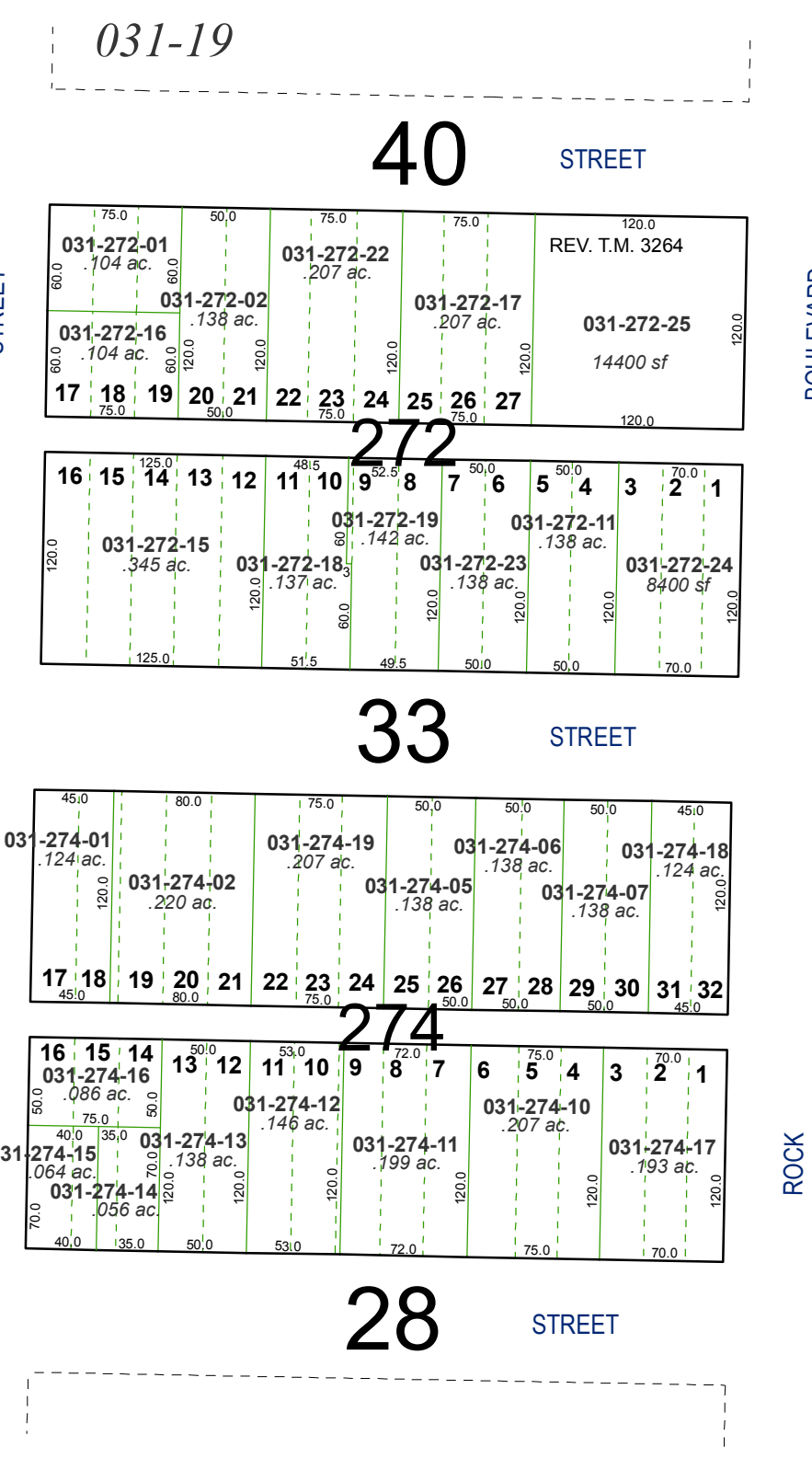
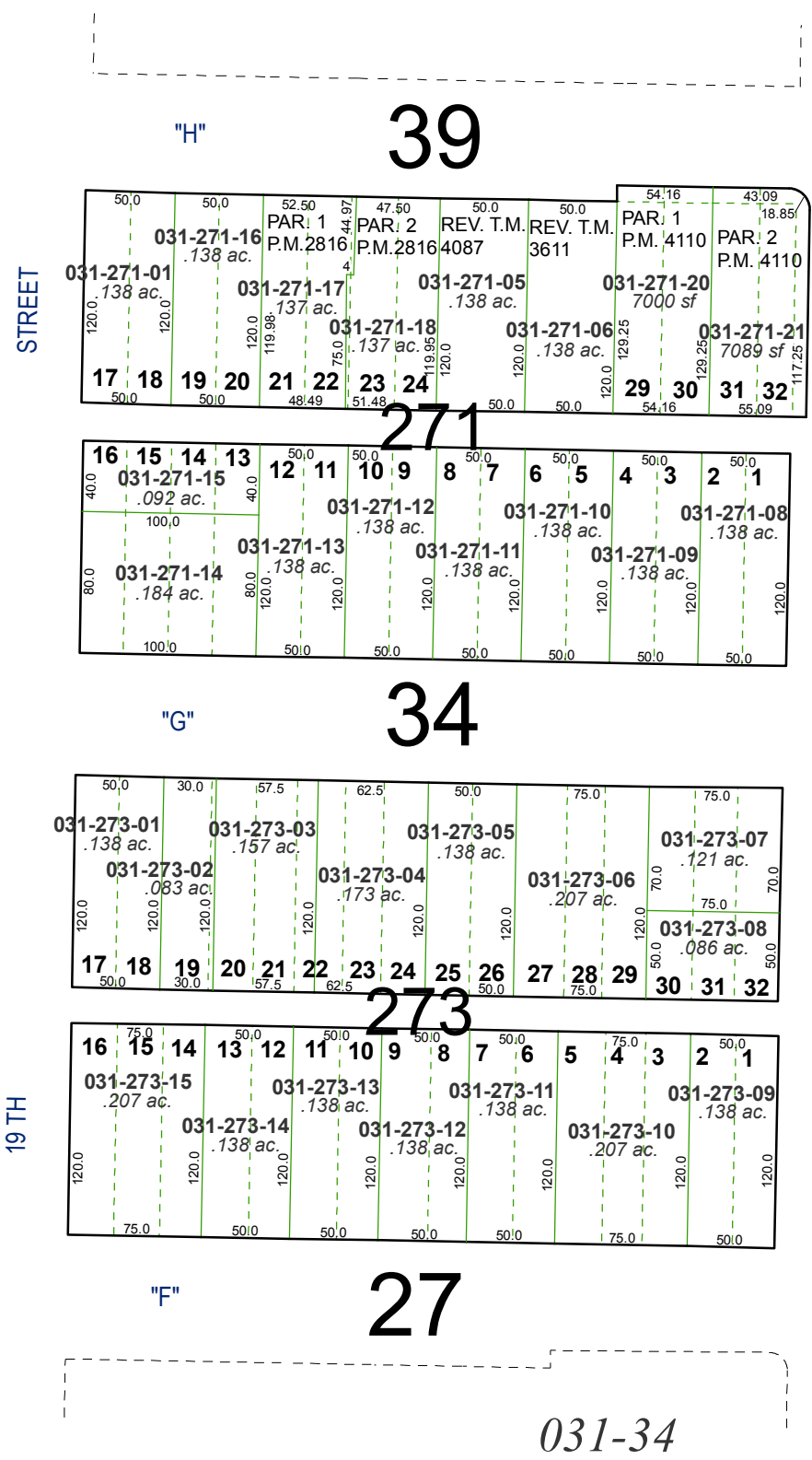


created by: NLH 4/07/2010

last updated: _____

area previously shown on map(s)

NOTE: This map was prepared for the use of the Washoe County Assessor for assessment and illustrative purposes only. It does not represent a survey of the premises. No liability is assumed as to the sufficiency or accuracy of the data delineated hereon.



031-26

031-28

031-35

031-34