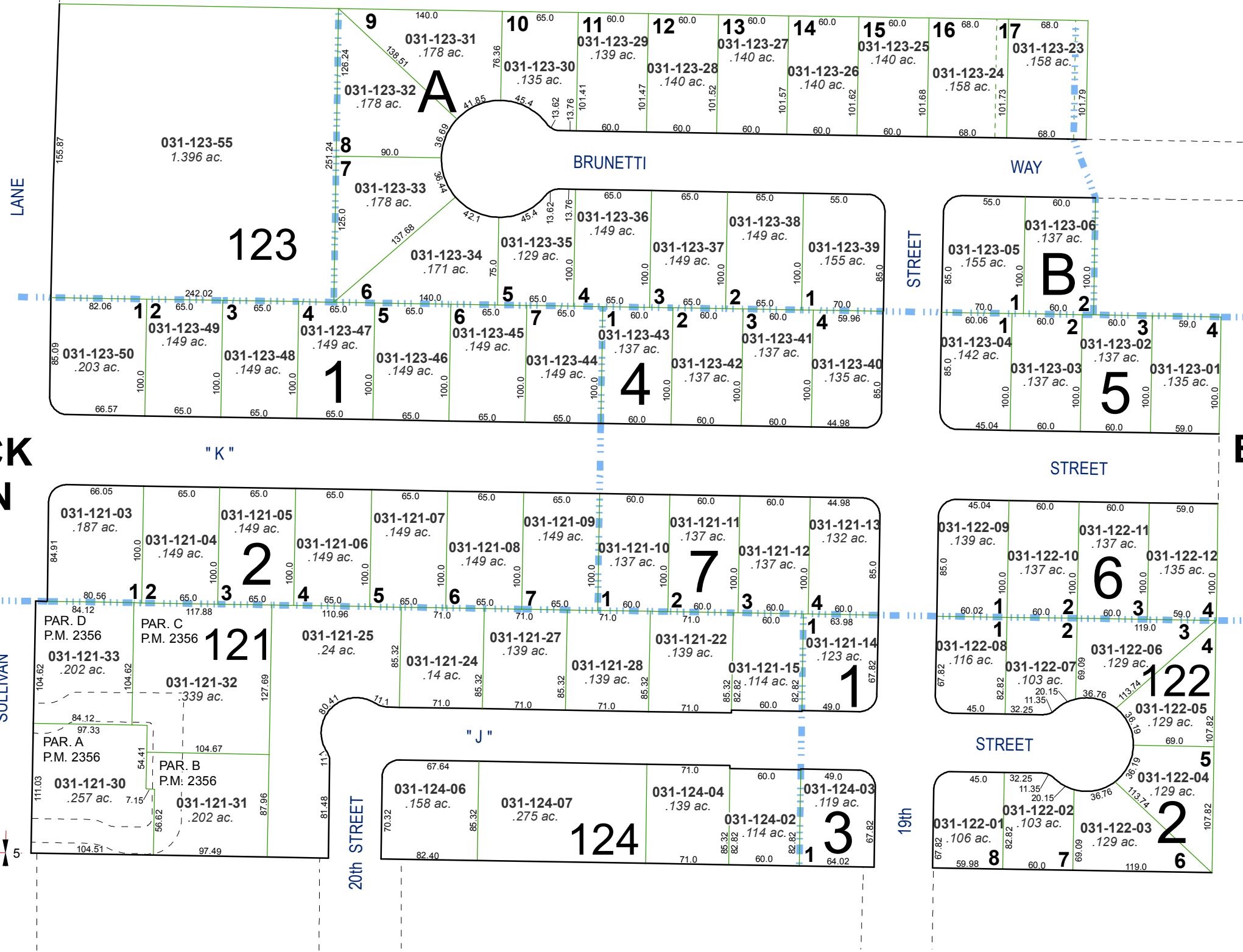


**(#687)**  
**BRUNETTI SUBDIVISION NO. 1**  
 A POR. OF THE NW ¼ OF SEC. 5  
 T19N - R20E



**(#539)  
 FREDERICK  
 ADDITION**

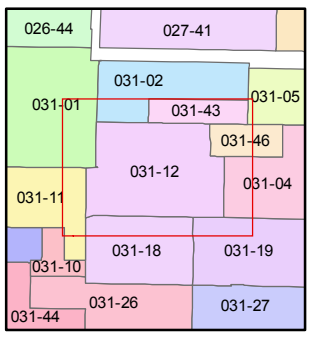
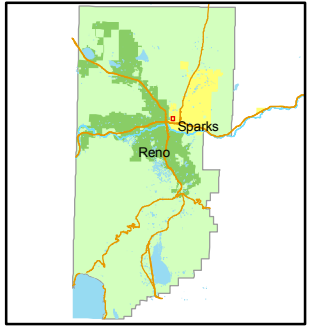
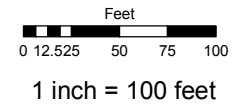
**(#400)  
 NORTH  
 EXTENSION  
 OF THE  
 BARNARD  
 ADDITION**

**(#324)  
 BARNARD  
 ADDITION**

Assessor's Map Number  
**031-12**

STATE OF NEVADA  
**WASHOE COUNTY**  
 ASSESSOR'S OFFICE  
 Joshua G. Wilson, Assessor

1001 East Ninth Street  
 Building D  
 Reno, Nevada 89512  
 (775) 328-2231



created by: NLH 7/29/2010

last updated: \_\_\_\_\_

area previously shown on map(s)  
 \_\_\_\_\_

NOTE: This map was prepared for the use of the Washoe County Assessor for assessment and illustrative purposes only. It does not represent a survey of the premises. No liability is assumed as to the sufficiency or accuracy of the data delineated hereon.